

## EXECUTIVE SUMMARY

The National Statistical Office (NSO) had previously carried out the Business trade and Services Census for three rounds; in 1966 and 1988 and 2002, as well as the organization of the Industrial Census in 1964, 1997 and 2007. For the year 2012, NSO has integrated the Industrial Census with the Business Trade and Services Census, the so-called ‘the Business and Industrial Census’. The objectives of the census is to collect basic information on the structure, the distribution and operation of business trade, services and manufacturing Industry. For this, all economic activities located in Bangkok, Pattaya, municipal areas and non-municipal areas were presented in the reports of Business and Industrial Census which were the results of the listing stage.

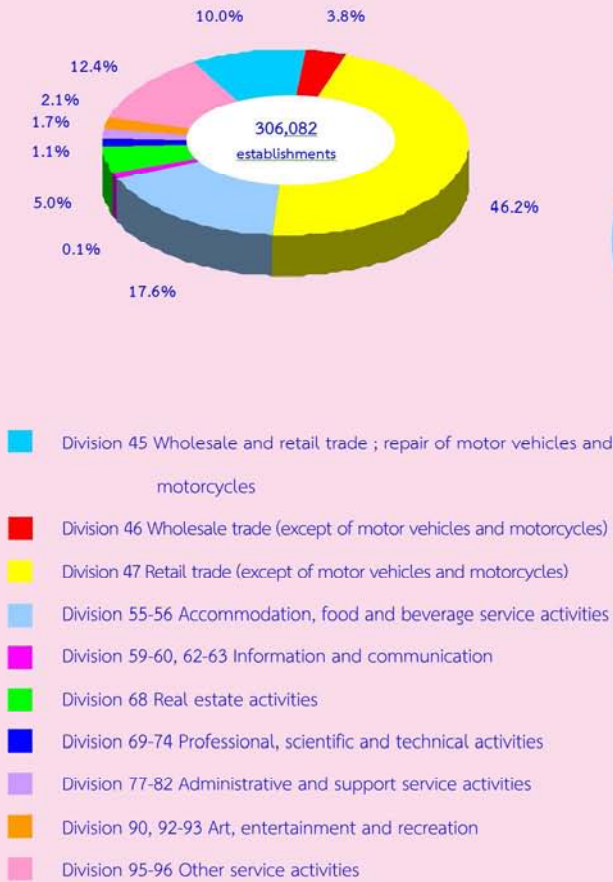
In order to collect detailed information of the establishments engaged in the business trade and services, the sample survey was adopted only for the establishments with 1-10 persons engaged, whereas the rest establishments, i.e. the establishments with 11 persons engaged and over, was collected as a whole. It is to be noted for the 2012 Business and Industrial Census that for non-response units of the establishments with 11 persons engaged and over, the estimation method was applied.

Information presented in this report was summarized from the enumeration stage which covered all the establishments engaged in the economic activity and classified according to the Thailand Standard Industrial Classification (TSIC-2009), e.g. *wholesale trade, retail trade, accommodation, food and beverage service activities, information and communication, real estate activities, professional, scientific and technical activities, administrative and support service activities, art, entertainment and recreation and other service activities*. The data presented was the information on business operation in 2011. The summary information of **Central region** is as follows :

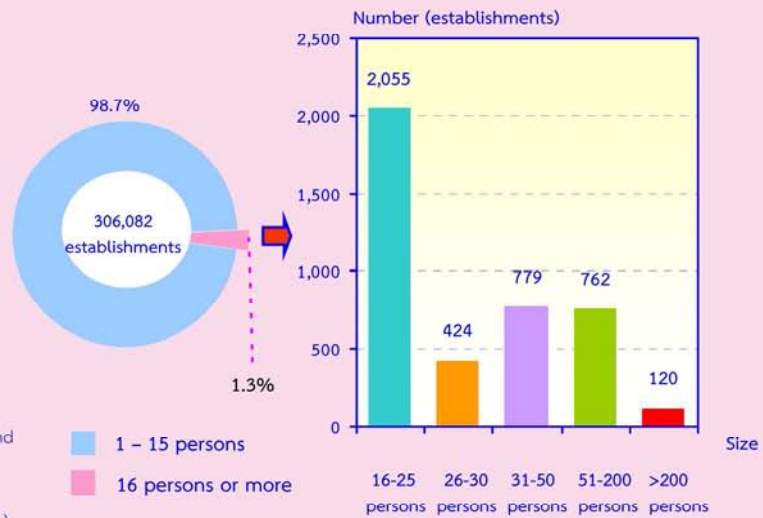
### 1. Number of establishments by division of business industry

The census result shows that, there were in total 306,082 establishments in the Central region. Most of them (about 46.2 percent) were engaged in *retail trade (except of motor vehicles and motorcycles)*. This was followed by those engaged in *accommodation, food and beverage service activities* of about 17.6 percent. The business establishments engaged in *other service activities, wholesale and retail trade; repair of motor vehicles and motorcycles* and *real estate activities* were about 12.4 percent, 10.0 percent and 5.0 percent respectively. The other divisions of business industry not mentioned above had rather low proportion; each division had less than 4.0 percent of the total.

**Figure 1 Percentage of business establishments by division of business industry**



**Figure 2 Number of business establishments by size of establishment**



## 2. Size of establishment

The size of establishments specified by number of person engaged, most of them (about 301,942 establishments or 98.7 percent) were establishments with 1-15 persons engaged. Those with more than 16 persons engaged were about 4,140 establishments or 1.3 percent. Of this number, establishments with 16-25 persons, 26-30 persons, 31-50 persons, and 51-200 persons amounted to 2,055 establishments, 424 establishments, 779 establishments, and 762 establishments respectively. The establishments with more than 200 persons engaged, were about 120 establishments.

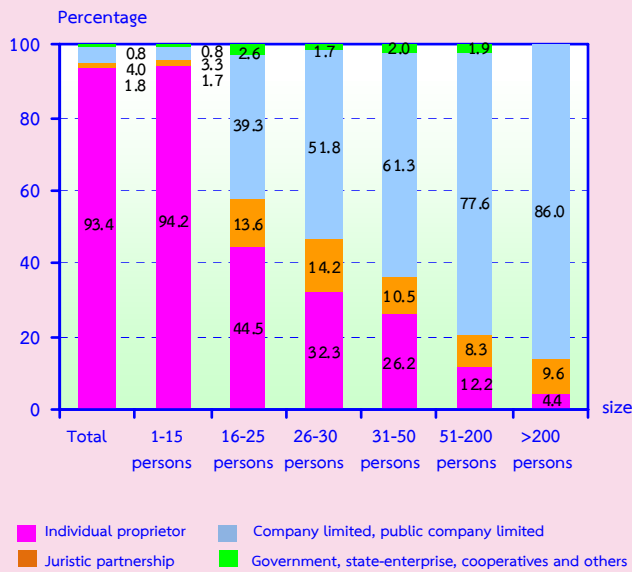
## 3. Form of legal organization

Most of establishments (about 93.4 percent) were individual proprietor. The establishments which were in the form of company limited or public company limited and juristic partnership were about 4.0 percent and 1.8 percent respectively. The rest of about 0.8 percent was government, state-enterprise, cooperatives and others.

Considering by size of establishment, it was found a high proportion of the establishments with 1-15 persons engaged (about 94.2 percent) which was in the form of individual proprietor. While a high proportion of about 86.0 percent of establishments with more than 200 persons engaged was in the form of company or public company limited.

**Figure 3 Percentage of business establishments**

**By form of legal organization and size of establishment**

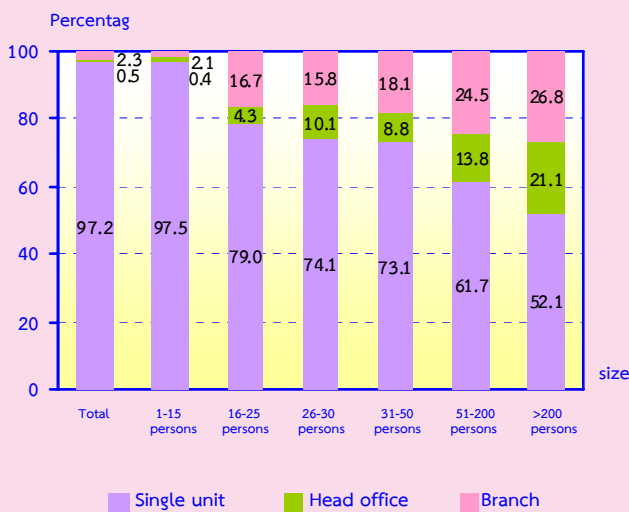


**4. Form of economic organization**

The majority of business establishments in Central region (97.2 percent) were in the form of single unit. About 2.3 percent was an office branch or subsidiary, and the rest of about 0.5 percent was a head office.

Considering the form of economic organization by size of establishment, it showed that most of establishments in all sizes were in the form of single unit.

**Figure 4 Percentage of business establishments by form of economic organization and size of establishment**

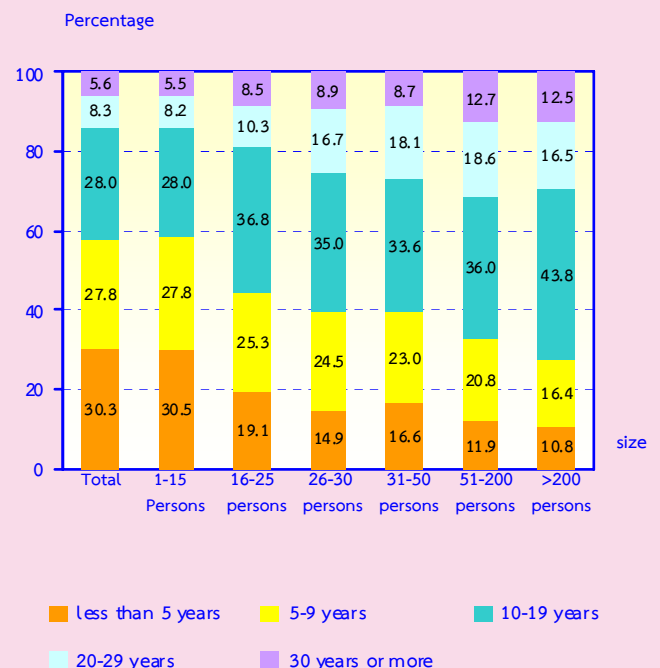


**5. Period of operation**

Most of establishments (about 30.3 percent) have operated their business less than 5 years. The establishments operated their business for 10-19 years and 5-9 years were about 28.0 percent and 27.8 percent respectively. Those with their operation business for 20-29 years and 30 years or more were about 8.3 percent and 5.6 percent respectively.

Considering by size of establishment (number of persons engaged), it was found that 58.3 percent of establishments with 1-15 persons have operated their business less than 10 years. Meanwhile, about 55.0 percent of establishments with 16 persons and over have operated their business for 10 years or more.

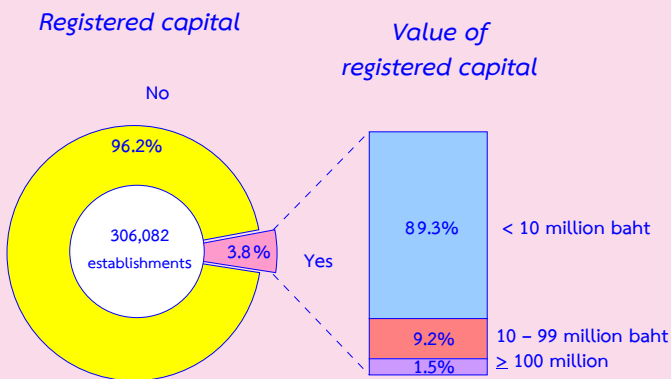
**Figure 5 Percentage of business establishments by period of operation and size of establishment**



## 6. Registered capital

The number of business establishments with registered capital amounted to 11,466 establishments or about 3.8 percent of the total. Most of them (about 89.3 percent) had less than 10 million baht of registered capital. Those with 10-99 million baht of registered capital were about 9.2 percent. The establishments with 100 million baht of registered capital and over were only 1.5 percent.

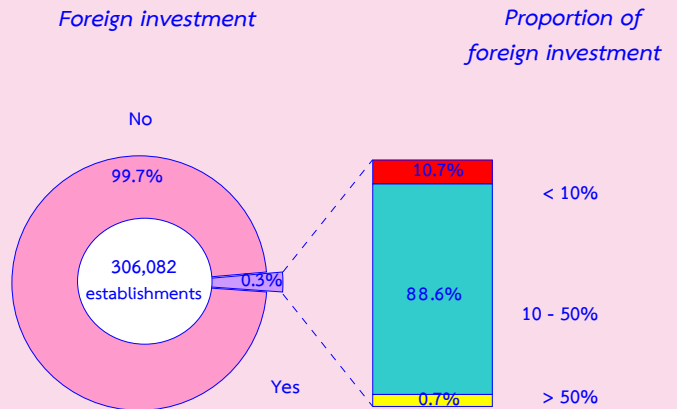
Figure 6 Percentage of business establishments by registered capital



## 7. Foreign investment or foreign share holding

The majority of business establishments in Central region (99.7 percent) had no foreign investment or foreign share holding. For the establishments with foreign share holding were only 0.3 percent. Out of these, about 88.6 percent was of establishments with foreign share holding around 10-50 percent and about 10.7 percent was of establishments with foreign share less than 10 percent. The rest of about 0.7 percent had foreign investment with a share holding over 50 percent.

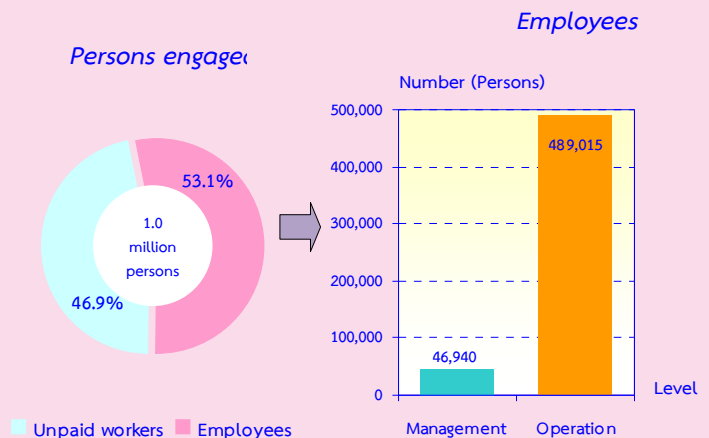
Figure 7 Percentage of business establishments by foreign investment or foreign share holding



## 8. Number of persons engaged and employees

Person engaged in establishment refers to owners, unpaid business partners and employees. In 2011, there were in total 1.0 million persons engaged in establishments located in Central Region. Of this number, about 473,401 persons or 46.9 percent were unpaid workers and 535,955 persons or about 53.1 percent were employees. Employees engaged in the operational level were about 489,015 persons or 91.2 percent, while employees engaged in management level amounted to 46,940 persons or 8.8 percent.

Figure 8 Number and percentage of persons engaged by level of employees





Considering number of employees by size of establishment, most of them (63.1 percent) were engaged in establishments with 1-15 persons. This was followed by those engaged in establishments with 51-200 persons and more than 200 persons, of about 13.1 percent and 9.3 percent respectively. The establishments with 16-25 persons and 31-50 persons were found the proportion of employees of about 6.9 percent and 5.5 percent respectively. The rest of about 2.1 percent was engaged in 26-30 persons. (Table 1)

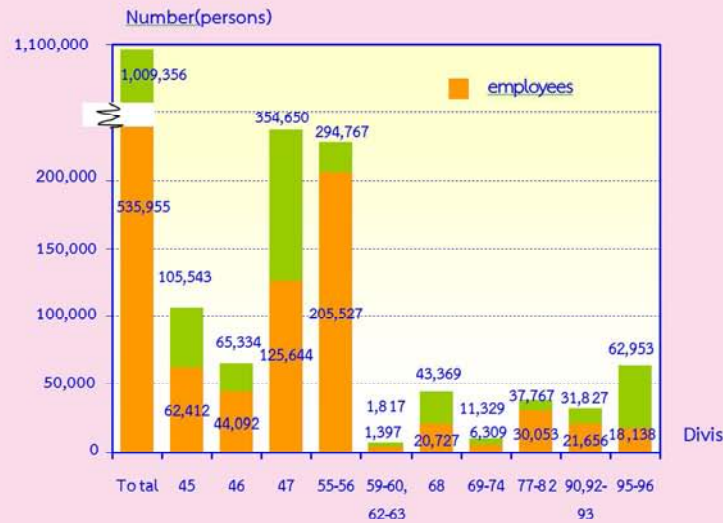
**Table 1** Number and percentage of persons engaged and employees in business establishments by size of establishment

Size of establishment	Persons engaged		Employees	
	Number	%	Number	%
Total	1,009,356	100.0	535,955	100.0
1-15 persons	806,198	79.9	337,750	63.1
16-25 persons	40,135	4.0	37,319	6.9
26-30 persons	11,847	1.2	11,402	2.1
31-50 persons	30,269	3.0	29,459	5.5
51-200 persons	71,044	7.0	70,205	13.1
More than 200 persons	49,863	4.9	49,820	9.3

Persons engaged refer to owners of juristic partnerships, unpaid workers and included employees in the establishments

Looking at division of business industry, it was found that most of employees engaged in *accommodation, food and beverage service activities*, of about 205,527 persons or 38.4 percent. This was followed by those engaged in *retail trade (except of motor vehicles and motorcycles)*, of about 125,644 persons or 23.4 percent. The employees engaged in *wholesale and retail trade ; repair of motor vehicles and motorcycles*, accounted for 62,412 persons or 11.7 percent, while the rest engaged in other business industries.

**Figure 9** Number of persons engaged and employees in business establishments by division of business industry



- Division 45 Wholesale and retail trade ; repair of motor vehicles and motorcycles
- Division 46 Wholesale trade (except of motor vehicles and motorcycles)
- Division 47 Retail trade (except of motor vehicles and motorcycles)
- Division 55-56 Accommodation, food and beverage service activities
- Division 59-60, 62-63 Information and communication
- Division 68 Real estate activities
- Division 69-74 Professional, scientific and technical activities
- Division 77-82 Administrative and support service activities
- Division 90, 92-93 Art, entertainment and recreation
- Division 95-96 Other service activities

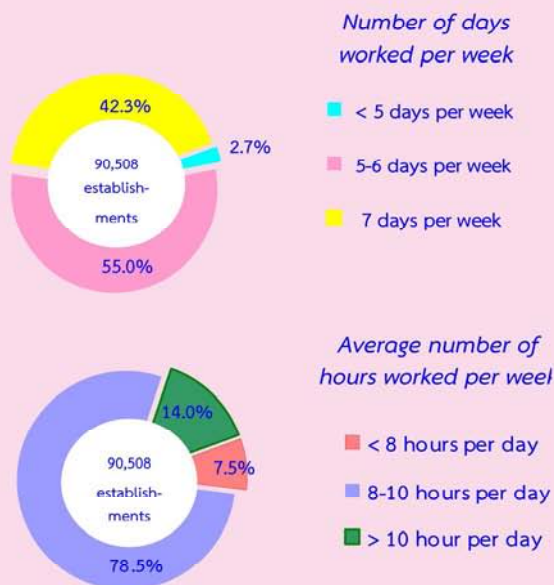


## 9. Number of days worked and hours worked by employees of business establishments

In terms of establishments with employees, there were about 90,508 establishments or 29.6 percent in Central region. Considering by number of days worked per week, it was found that about 55.0 percent was of establishments with employees worked around 5-6 days per week. For those with their employees worked around 7 days per week were about 42.3 percent. The rest of about 2.7 percent was of establishments with their employees worked less than 5 days per week.

Considering by average number of hours worked per day, most of establishments (about 78.5 percent) have employees worked around 8-10 hours per week. Those with their employees worked more than 10 hours per week were about 14.0 percent. The rest of about 7.5 percent was of establishments which have employees worked per week less than 8 hours.

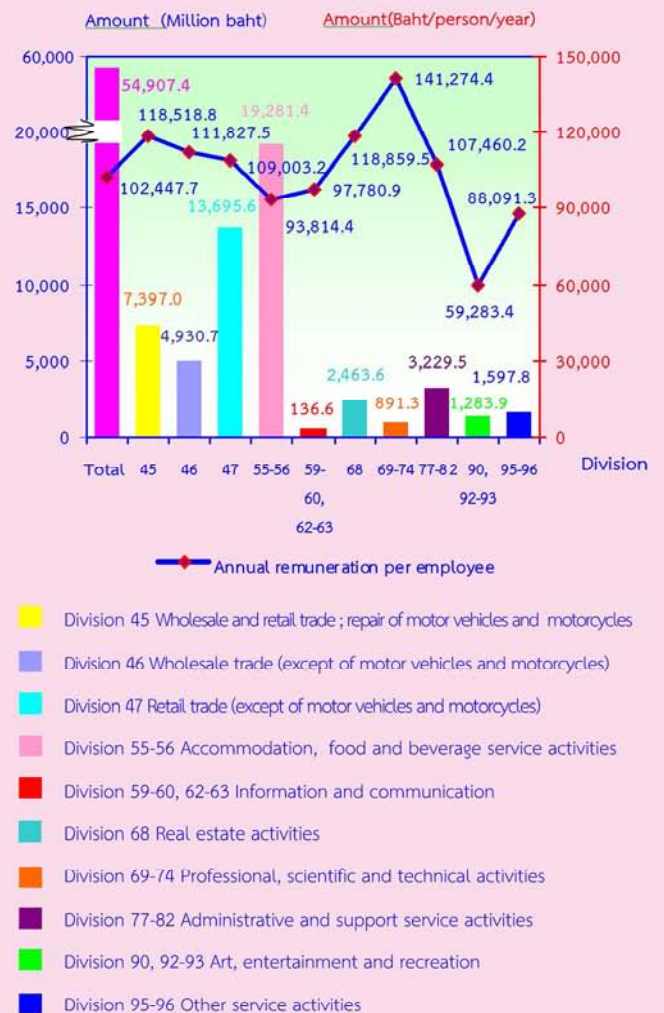
Figure 10 Percentage of business establishments by number of days worked and hours worked



## 10. Remuneration

Remuneration of all employees engaged in business establishments in Central region was about 54.9 billion baht or about 102,448 baht per person per annum. Employees engaged in *professional, scientific and technical activities* received the highest annual remuneration of about 141,274 baht per person. This was followed by those engaged in *real estate activities* and *wholesale and retail trade; repair of motor vehicles and motorcycles* received the annual remuneration of about 118,860 baht and 118,519 baht per person respectively. Employees engaged in *art, entertainment and recreation* received the lowest annual remuneration of about 59,283 baht per person.

Figure 11 Remuneration and annual remuneration per employee by division of business industry



## 11. Income, Intermediate consumption and value added

In 2011, the income, intermediate consumption and value added of business establishments in Central region amounted to 1.1 trillion baht, 742.0 billion baht and 309.6 billion baht respectively. The ratio of the value added to the income was about 29.4 percent. For the average value of income per establishment and per person engaged, there were about 3.4 million baht and 1.0 million baht respectively. While also, the average value added per establishment and per person engaged amounted to 1.0 million baht and 306,700 baht respectively.

Considering by division of business industry, it showed that most of the income were from *retail trade (except of*

*motor vehicles and motorcycles)* had the highest of income, of about 464.5 billion baht. This was followed by the establishments engaged in *wholesale and retail trade (except of motor vehicles and motorcycles)* accounted for 213.2 billion baht. Establishments engaged in *retail trade, (except of motor vehicles and motorcycles)* contributed the highest value added of about 118.3 billion baht. Followed by those engaged in *accommodation, food and beverage service activities* accounted for 58.1 billion baht. Meanwhile, establishments engaged in *information and communication* had the lowest income and value added of about 1.1 billion baht and 605.2 million baht respectively.

**Table 2 Income and value added of business establishments by division of business industry**

Division of business industry	Income			Value added			Value added per income (%)
	Value (Million baht)	Per establishment (In Thousand baht)	Per person engaged (In Thousand baht)	Value (Million baht)	Per establishment (In Thousand baht)	Per person engaged (In Thousand baht)	
<b>Total</b>	<b>1,051,613.4</b>	<b>3,435.7</b>	<b>1,041.9</b>	<b>309,603.5</b>	<b>1,011.5</b>	<b>306.7</b>	<b>29.4</b>
Wholesale and retail trade ; repair of motor vehicles and motorcycles	213,218.1	6,989.6	2,020.2	43,391.8	1,422.4	411.1	20.4
Wholesale trade (except of motor vehicles and motorcycles)	172,971.7	14,657.4	2,647.5	33,160.4	2,810.0	507.6	19.2
Retail trade (except of motor vehicles and motorcycles)	464,504.2	3,285.0	1,309.8	118,335.3	836.9	333.7	25.5
Accommodation , food and beverage service activities	121,196.4	2,243.6	411.2	58,058.5	1,074.8	197.0	47.9
Information and communication	1,145.3	4,405.0	630.3	605.2	2,327.7	333.1	52.8
Real estate activities	36,449.4	2,391.1	840.5	29,307.1	1,922.5	675.8	80.4
Professional, scientific and technical activities	4,963.4	1,535.2	438.1	2,942.6	910.2	259.7	59.3
Administrative and support service activities	13,049.2	2,431.4	345.5	10,643.1	1,983.1	281.8	81.6
Art, entertainment and recreation	7,582.2	1,195.7	238.2	4,672.2	736.8	146.8	61.6
Other service activities	16,533.5	436.1	262.6	8,487.3	223.9	134.8	51.3

## 12. Comparison the overall operation of business trade and services during 10 years

The overall operation of business trade and services during 10 years, it was found that the number of establishments, the employment, the income and value added were favorably growth. However, it was excepted for the year 2009 which was suffered the decrease of business operation due to the impact of global economic crisis. For the year 2011, although there was flooding disaster in Thailand throughout the country, it temporarily affected business establishments. Therefore, the overall operation of business in Central region in that year still showed an increase.

Comparing the 2012 Business and Industrial census with the 2002 Business Trade and Services survey, it was discovered

that the number of business establishments with one person engaged or more in Central region increased by 48.2 percent. Subsequently, total number of persons engaged and average number of persons engaged per establishment increased by 66.1 percent and 13.8 percent respectively.

In term of employment, it was found that number of employees increased by one time or 106.1 percent. This was resulted in the average number of employees increased by 38.5 percent. It was also found that the annual remuneration grew by 2.6 times or 260.4 percent.

Due to the value of income which was increased by 1.8 times or 180.6 percent, then the value added increased by 2 times or 210.1 percent

**Table 3 Principal data of Business Trade and Service in 2001 -2011**

Data items	2001 <sup>1/</sup>	2003 <sup>1/</sup>	2005 <sup>1/</sup>	2007 <sup>1/</sup>	2009 <sup>1/</sup>	2011 <sup>2/</sup>	Percent change 2001 and 2011
Number of establishments (establishment)	206,518	206,348	215,320	278,848	278,307	306,082	48.2
Number of persons engaged (Person)	607,820	653,988	729,877	901,910	769,095	1,009,356	66.1
<i>Average per establishment (Person)</i>	2.9	3.2	3.4	3.2	2.8	3.3	13.8
Number of employee (Person)	260,103	311,465	368,476	448,287	371,128	535,955	106.1
<i>Average per establishment (Person)</i>	1.3	1.5	1.7	1.6	1.3	1.8	38.5
Remuneration (Million baht)	15,234.4	21,246.6	34,927.2	39,002.0	34,159.2	54,907.4	260.4
<i>Average annual per employee (baht)</i>	58,570.7	68,215.1	94,788.1	87,002.4	92,041.7	102,447.7	74.9
Income (Million baht)	374,796.3	491,766.7	688,136.2	889,472.7	831,646.4	1,051,613.4	180.6
<i>Average per establishment (Thousand baht)</i>	1,814.8	2,383.2	3,195.9	3,189.8	2,988.2	3,435.7	89.3
<i>Average per person engaged (Thousand baht)</i>	616.6	752.0	942.8	986.2	1,081.3	1,041.9	68.9
Intermediate consumption (Million baht)	274,939.9	380,161.8	530,558.3	704,975.3	666,227.7	742,009.9	169.9
<i>Average per establishment (Thousand baht)</i>	1,331.3	1,842.3	2,464.0	2,528.2	2,393.9	2,424.2	82.1
<i>Average per person engaged (Thousand baht)</i>	452.3	581.3	726.9	781.6	866.2	735.1	62.5
Value added (Million baht)	99,856.3	111,604.9	157,577.9	184,497.5	165,418.6	309,603.5	210.1
<i>Average per establishment (Thousand baht)</i>	483.5	540.9	731.8	661.6	594.4	1,011.5	109.2
<i>Average per person engaged (Thousand baht)</i>	164.3	170.7	215.9	204.6	215.1	306.7	86.7

Note : <sup>1/</sup> Business Trade and Services Survey 2002-2010 , Central region

<sup>2/</sup> Business and Industrial Census 2012 (Business Trade and Services), Central region



### 13. Conclusion and recommendations

The results of the 2012 Business and Industrial Census (Business Trade and Service) showed that there were in total 306,082 business establishments in Central region. Most of them (about 98.7 percent) were establishments with 1-15 persons. The major business was *retail trade, (except of motor vehicles and motorcycles)* accounted for 46.2 percent. Regarding persons engaged in business establishments, there were totally 535,955 persons. Of this number, about 102,448 baht per persons were employees. Moreover, the business establishments contributed about 1.1 trillion baht of income, 742.0 billion baht of intermediate consumption and 309.6 billion baht of value added.

Comparing information of survey and census during 2002-2012, the result showed the operation of business establishments in the Central region was considerably growth. This was probably due to the increase in number

of establishments, the employment and the remuneration. Furthermore, the overall of Thailand economy was expanded due to more investment in business entities and employment responding to the demand in both domestic and foreign market.

- **Problems and obstacles of establishments**

About 57.2 percent of business establishments reported their problems and obstacles. The main issues were the increasing of business competitors, the economic crisis, the high production cost, and the lower of purchasing power, etc.

- **Aid needed from the government**

About 48.9 percent of business establishments expressed their opinion on aid needed from the government. The main issues were the need for good price control, economic stimulation, tax reduction scheme, support of funding and lower rate interest, etc.