

## Data Summary

### The 2008 Business Trade and Services Survey : Vicinity



The National Statistical Office carried out the 2008 Business Trade and Services Survey, which is the 23<sup>rd</sup> round, in 2008. The main purpose of the survey is to collect the basic business information to be used by both public and private sectors, in business policy formulation and planning development. The survey covered business establishments with one person engaged or more in wholesale trade, retail trade, hotels and restaurants, real estate activities, recreational and other services activities, located in municipal areas and non-municipal areas, throughout the country.

The field work was conducted during April 1 to July 31, 2008. The data presented in this report was the operation of the business establishments business located in **Vicinity** during January 1 to December 31, 2007. The major findings are as follows:

#### 1. Number of establishments by division of business industry

The results of the survey, show that there were in total 142,403 establishments in Vicinity. Most of them (about 42.5 percent) were engaged in *retail trade, (except of motor vehicles and motorcycles), repair of personal and household goods*. Followed by those engaged in *hotels and restaurants*, of about 14.3 percent. For the establishments were engaged in *the other service activities and real estate activities*, which had the close proportion were about 11.7 and 11.4 percent respectively. The other divisions of business industry not mentioned above had rather low proportion, each had less than 10.0 percent of the total.

**Table 1 Number and percentage of business establishments by division of business industry**

Division of business industry	Number	%
<b>Total</b>	<b>142,403</b>	<b>100.0</b>
Sale, maintenance and repair of motor vehicles and motorcycles, retail sale of automotive fuel	13,250	9.3
Wholesale trade and commission trade, except of motor vehicles and motorcycles	6,406	4.5
Retail trade, (except of motor vehicles and motorcycles), repair of personal and household goods	60,469	42.5
Hotels and restaurants	20,361	14.3
Real estate activities	16,289	11.4
Renting of machinery and equipment without operator and of personal and household goods	1,425	1.0
Computer and related activities	595	0.4
Research and development	13	-
Other business activities	4,179	2.9
Recreational, cultural and sporting activities	2,774	2.0
Other service activities	16,642	11.7

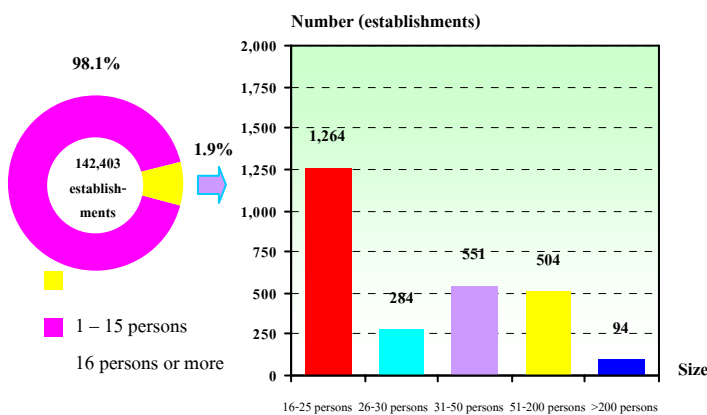
Note : - Nil of zero or negligible amount.

#### 2. Size of establishment

The majority of business establishments (about 139,706 establishments or 98.1 percent) were small scale establishments with 1-15 persons. Those with more than 15 persons engaged were about 2,697 establishments or 1.9 percent. Of that total, about 1,264 establishments were engaged in establishments with 16-25 persons. For those with 31-50 persons,

51-200 persons and 26-30 persons amounted to 551 establishments, 504 establishments and 284 establishments respectively, while the largest size of establishments (with more than 200 persons engaged) amounted to only 94 establishments.

**Figure 1 Number of business establishments by size of establishment (number of person engaged)**

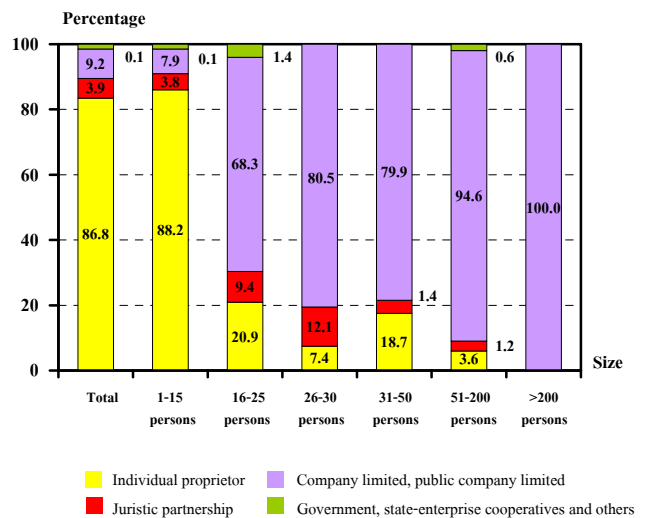


### 3. Form of legal organization

Most establishments (about 86.8 percent) were individual proprietor. The establishments as company limited, public company limited and juristic partnership were about 9.2 and 3.9 percent respectively. Those, which were in the form of government, state-enterprise cooperatives and others, were very small proportion, of about 0.1 percent.

Considering by size of establishments, it was found that the smallest size with 1-15 persons engaged had the highest proportion, of about 88.2 percent. For the largest size with 200 persons or more, it showed that all of them were in the form of company limited, public company limited.

**Figure 2 Percentage of business establishments by form of legal organization and size of establishment**

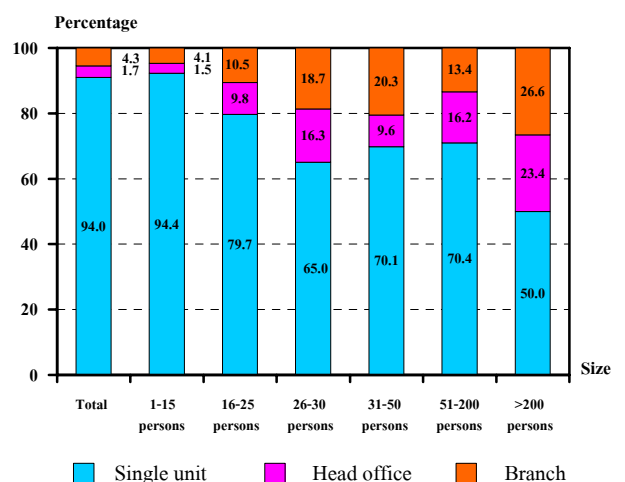


### 4. Form of economic organization

The majority of establishments in Vicinity or 94.0 percent was single unit. About 4.3 percent was branch or subsidiary, and the rest of about 1.7 percent was head office.

Considering the form of economic organization by size of establishment, it showed that there was higher proportion of single unit in all sizes of establishment.

**Figure 3 Percentage of business establishments by form of economic organization and size of establishment**

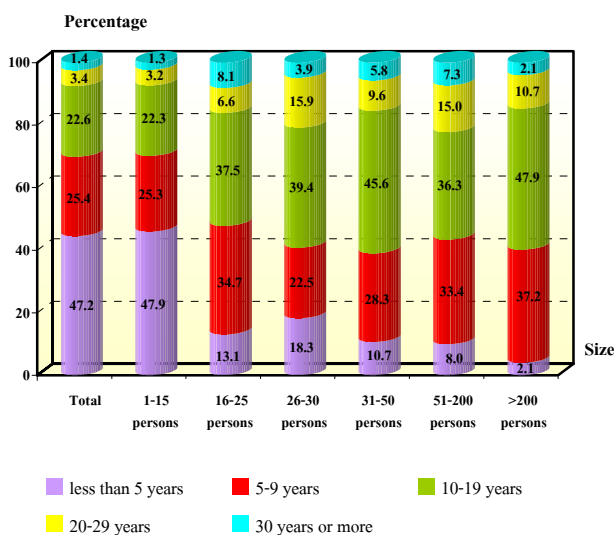


### 5. Period of operation

Most of the establishments (about 47.2 percent) have operated their business less than 5 years. The establishments operated their business for 5-9 years and 10-19 years were about 25.4 and 22.6 percent respectively. Those with operation for 20-29 years and 30 years or more were about 3.4 and 1.4 percent respectively.

Considering by size of establishment, it was found that more than half of the establishments, with 16 persons engaged or more, have operated their business for 10 years or more. However, most establishments, with 1-15 persons engaged (73.2 percent) have operated their business less than 10 years.

**Figure 4 Percentage of business establishments by period of operation and size of establishment**

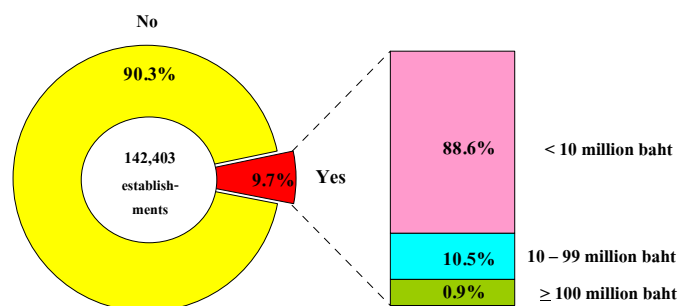


### 6. Register capital

The number of business establishments with registered capital amounted to 13,808 establishments or about 9.7 percent of the total. Most of them (about 88.6 percent) had less than 10 million baht of register capital. Those with 10-99

million baht of register capital, were about 10.5 percent. The establishments with 100 million baht of register capital and over were about 0.9 percent.

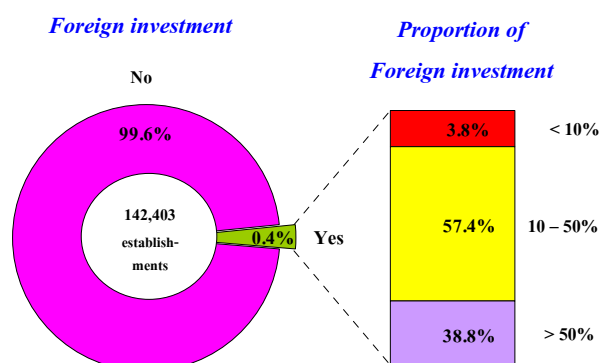
**Figure 5 Percentage of business establishments by register capital**



### 7. Foreign investment or share holding

The majority of business establishments in Vicinity or 99.6 percent had no foreign investment or share holding, while the rest of about 534 establishments or 0.4 percent did. Out of these, most of them about 57.4 percent was 10-50 percent of share holding and about 38.8 percent was over fifty percent of share holding. The rest, of about 3.8 percent was with less than ten percent of share holding.

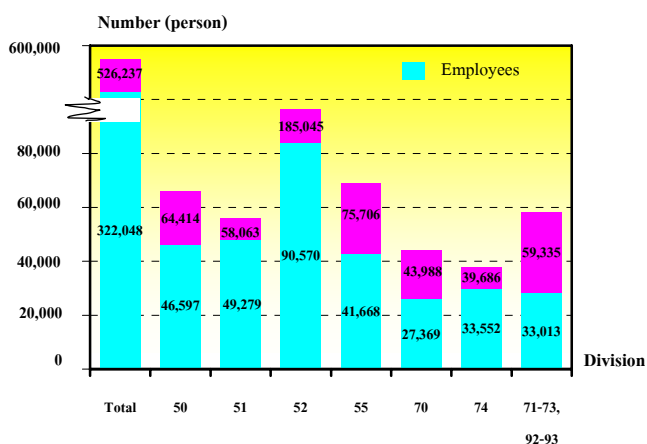
**Figure 6 Percentage of business establishments by foreign investment or share holding**



### 8. Number of persons engaged and employees

In 2007, the number of persons engaged in the business establishments in Vicinity amounted to 526,237 persons. In terms of employment, the number of employees amounted to 322,048 persons. Considering by division of business industry, it was found that most of them engaged in, *retail trade, (except of motor vehicles and motorcycles) repair of personal and household goods* of about 90,570 persons or 28.1 percent. Followed by those engaged in *wholesale trade and commission trade, except of motor vehicles and motorcycles* about 49,279 persons or 15.3 percent. The rest engaged in business industry not mentioned above.

**Figure 7 Number of persons engaged of business establishments by division of business industry**



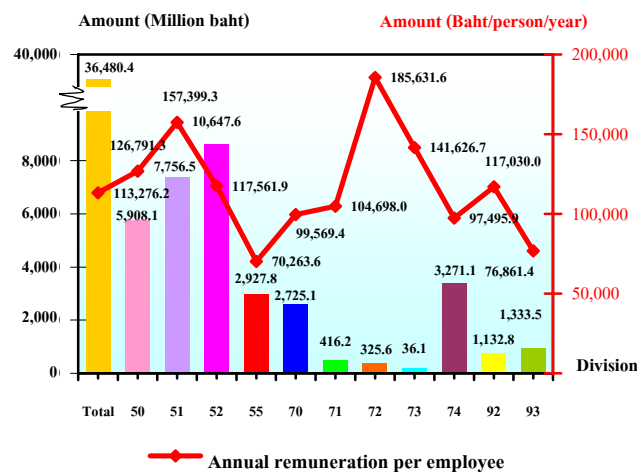
*Persons engaged refer to owners or juristic partnerships, unpaid workers and employees*

- Division 50 Sale, maintenance and repair of motor vehicles and motorcycles.
- Division 51 Wholesale trade and commission trade, except of motor vehicles and motorcycles.
- Division 52 Retail trade, (except of motor vehicles and motorcycles etc).
- Division 55 Hotels and restaurants
- Division 70 Real estate activities
- Division 71 Renting of machinery and equipment.
- Division 72 Computer and related activities
- Division 73 Research and development
- Division 74 Other business activities
- Division 92 Recreational, cultural and sporting activities
- Division 93 Other service activities

### 9. Remuneration

The employees engaged in business establishments in Vicinity received the total remuneration of about 36.5 billion baht or about 113,276 baht per person per annum. The employees engaged in *computer and related activities* received the highest annual remuneration, of about 185,632 baht. Followed by those engaged in *wholesale trade and commission trade, except of motor vehicles and motorcycles* and *research and development* received the annual remuneration, of about 157,399 baht and 141,627 baht per person respectively. The employees engaged in *hotels and restaurants* received the lowest annual remuneration, of about 70,265 baht per person.

**Figure 8 Remuneration and annual remuneration per employee by division of business industry**



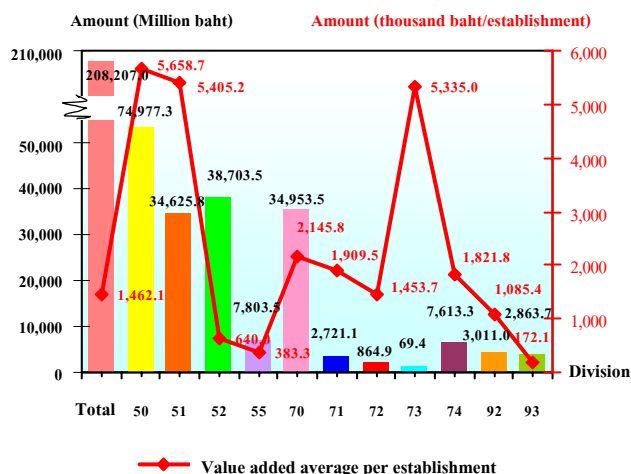
### 10. Receipts, expenditures and value added

In 2007, the value of receipts, expenditures and value added of business establishment in Vicinity amounted to 999.0 billion baht, 790.8 billion baht and 208.2

billion baht respectively. Comparing the value added to receipts, it was about 20.8 percent. The average value added to receipts per establishment and per person engaged, it was about 7.0 million baht and 1.9 million baht respectively. While the average value added per establishment and per person engaged amounted to 1.5 million baht and 395,700 baht respectively.

Considering by division of business industry, it was found that the establishments engaged in *sale, maintenance and repair of motor vehicles and motorcycles, retail sale of automotive fuel* had the highest value added of about 75.0 billion baht. Followed by those engaged in *retail trade (except of motor vehicles and motorcycles) repair of personal and household goods* amounted to 38.7 billion baht. However, the establishments engaged in *research and development* had the lowest value added of about 69.4 million baht.

**Figure 9 Value added of business establishments by division of business industry**



- Division 50 Sale, maintenance and repair of motor vehicles and motorcycles.
- Division 51 Wholesale trade and commission trade, except of motor vehicles and motorcycles.
- Division 52 Retail trade, (except of motor vehicles and motorcycles etc).
- Division 55 Hotels and restaurants
- Division 70 Real estate activities
- Division 71 Renting of machinery and equipment.
- Division 72 Computer and related activities
- Division 73 Research and development
- Division 74 Other business activities
- Division 92 Recreational, cultural and sporting activities
- Division 93 Other service activities

## 11. Conclusions and recommendations

The results of the 2008 Business Trade and Services survey show that there were in total 142,403 business establishments in Vicinity. Most of them (about 98.1 percent) were small scale establishments with 1-15 persons. The major business was *retail trade, (except of motor vehicles and motorcycles), repair of personal and household goods*, (about 42.5 percent). Persons working in business establishments amounted to 526,237 persons. Out of this, about 322,048 were employees receiving the annual remuneration, of about 113,276 baht per person. Moreover, the establishments contributed value of receipts, expenditures and value added, of about 999.0 billion baht, 790.8 billion baht and 208.2 billion baht respectively.

The survey also incorporated questions concerning problems and obstacles of business establishments, which was about 17.4 percent. Of these, 38.5 percent from competition, 36.6 percent was suffered from a higher production cost and 34.0 percent from economic crisis etc.

About 14.1 percent of business establishments expressed their opinion on aid needed from the government. Of these, about 44.1 percent needed for oil and goods prices control, 28.1 percent required lower rate loan and 19.5 percent for tax reduction scheme etc.