

Summary of the labor force survey in Thailand : March 2016

of population Table 1 Comparison aged 15 years and over by labor force status

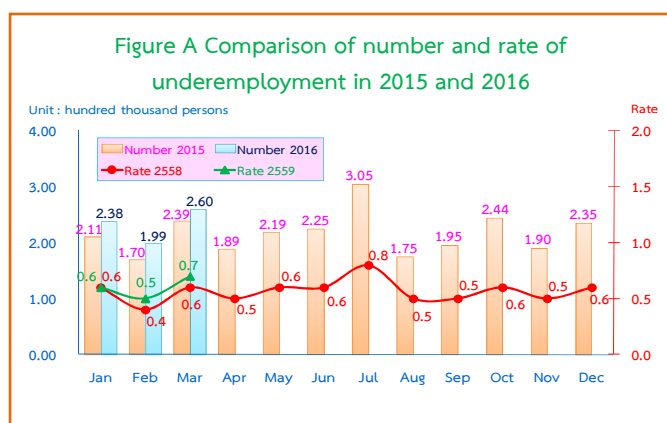
Unit : million persons

Labor force status	2015			2016	
	Feb	Mar	Apr	Feb	Mar
Persons 15 years and over	55.09	55.12	55.16	55.47	55.50
1. Total labor force	38.52	38.37	38.28	38.42	38.35
1.1 employed	37.93	37.62	37.53	37.87	37.61
1.2 unemployed	0.32	0.38	0.32	0.34	0.40
1.3 seasonally	0.27	0.37	0.43	0.21	0.34
2. Not in labor force	16.57	16.75	16.88	17.05	17.15

employed persons Table 2 Comparison of number of by industry

Unit : Million persons

Industry	2015			2016	
	Feb	Mar	Apr	Feb	Mar
Total	37.93	37.62	37.53	37.87	37.61
1. Agricultural	11.36	11.63	10.61	11.19	11.25
- Agriculture, forestry and fishing	11.36	11.63	10.61	11.19	11.25
2. Non-Agricultural	26.57	25.99	26.92	26.68	26.36
- Manufacturing	6.57	6.60	6.81	6.60	6.23
- Construction	2.56	2.52	2.56	2.69	2.70
- Wholesale and retail trade; repair of motor vehicles and motorcycles	6.17	6.14	6.48	6.31	6.38
- Transportation and storage	1.33	1.16	1.26	1.28	1.23
- Accommodation and food service activities	2.73	2.64	2.78	2.71	2.72
- Financial and insurance activities	0.59	0.51	0.55	0.54	0.53
- Real estate activities	0.19	0.16	0.18	0.19	0.21
- Public administration defence and compulsory social security	1.66	1.52	1.62	1.62	1.50
- Education	1.20	1.22	1.11	1.23	1.19
- Human health and social work activities	0.77	0.66	0.72	0.65	0.72
- Other service activities	0.78	0.78	0.71	0.84	0.84
- Others	2.02	2.08	2.14	2.02	2.11



Remark : Underemployment worker is a worker who working less than 35 hours per week and available for additional work.

Structure of the Labor force

The results of Labor Force Survey in March 2016 showed that there are population, aged 15 years and over, of about 55.50 million persons. Of these 38.35 million were in the labor force or available for work (37.61 million were employed, 0.40 million were unemployed and 0.34 million were seasonally inactive labor force), while 17.15 million were not in the labor force or not available for work, such as housewives, students or elderly.

Employed of the Labor force

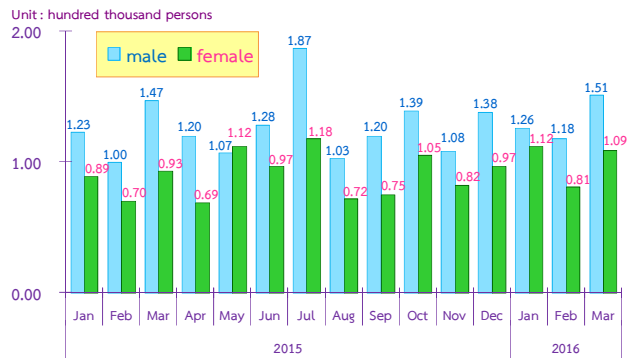
-Employed

There were 37.61 million employed persons, which 11.25 and 26.36 million were in agriculture and non-agriculture sectors, respectively. Comparing with March in 2015, it was shown that the number of employed persons in agriculture sector decreased by 0.38 million, but non-agriculture sector increased by 0.37 million (from 25.99 million to 26.36 million). This increment was found in various industries e.g. 0.24 million in wholesale and retail trade repair of motor vehicles and motorcycles, 0.18 million in construction, 80 thousand in accommodation and food service activities, 70 thousand in transportation and storage, 60 thousand in human health and social work activities and other service activities and 50 thousand in real estate activities, However, a decrease in some other industries was found e.g., 0.37 million in manufacturing, 30 thousand in education and 20 thousand in public administration defence and compulsory social security and the rest shared in the other industries.

Underemployment workers

Considering the number of underemployed workers and available for additional work, there were 0.26 million or 0.7% of the total employed persons.

Figure B Comparison of number and underemployment rate by sex in 2015-2016

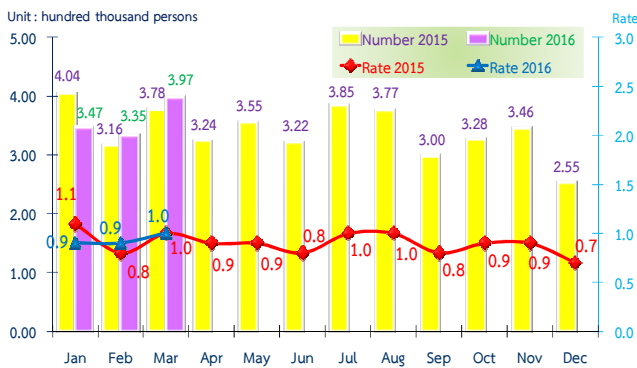


Considered underemployment rate by sex, it was shown that the overall underemployment rate of male was higher than female.

In March 2016, number of underemployment of male was higher than female (0.15 million and 0.11 million respectively).

And underemployment rate of male was 0.7% and female was 0.6%.

Figure C Comparison of number and rate of unemployment in 2015 and 2016



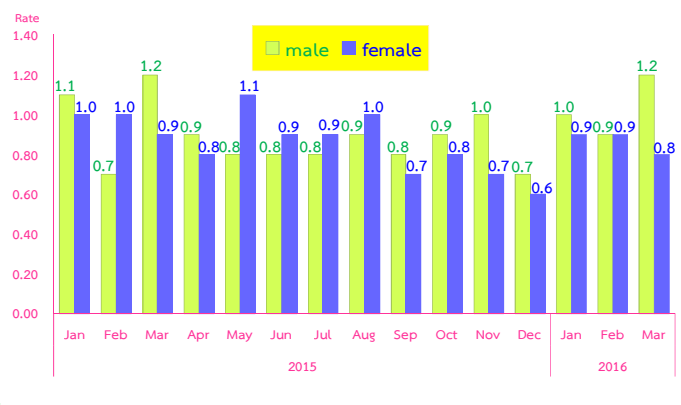
Unemployment

-Number and Rate of unemployment

In March 2016, the total number of unemployed persons were 0.40 million or 1.0% of the total labor force and increased of 19 thousand (from 378 thousand to 397 thousand) comparing to the same period as in 2015. And, showed a increased of 62 thousand (from 335 thousand to 397 thousand) in February 2016.

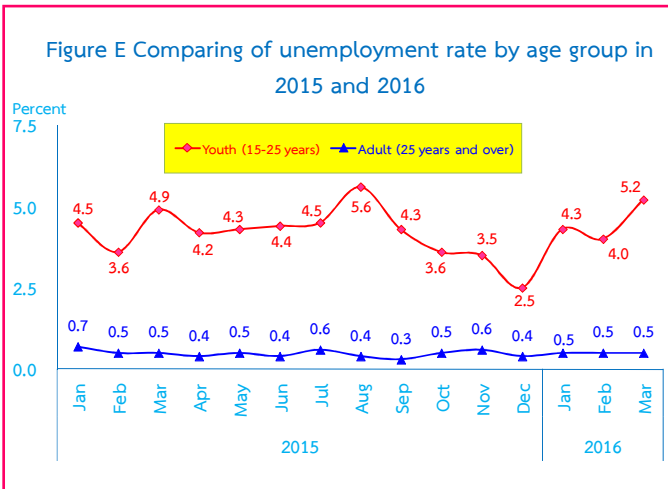
Comparing to the unemployment rate to the same period as in 2015 did not change (1.0%) and increased from 0.9% to 1.0% comparing to February in 2016.

Figure D Comparison of unemployment rate by sex in 2015-2016



Unemployment rate by sex

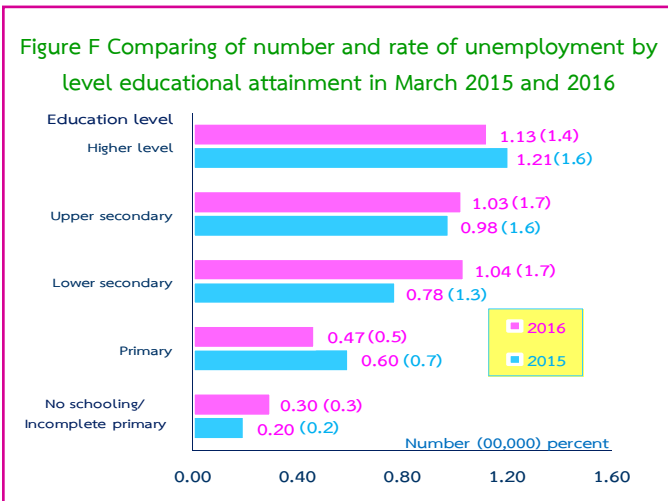
Comparing to the unemployment rate by sex in March 2016, it was found that, unemployment rate of male was higher than female (1.2% and 0.8% respectively)



Unemployment rate by age group

Regarding the unemployment rates by age groups, there were 5.2% in a youth group (aged 15-24 years) and 0.5% in adults group (age 25 years and over).

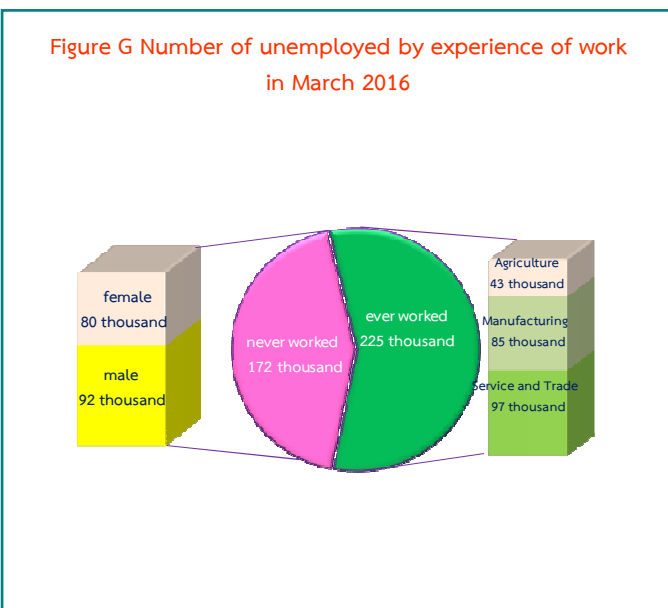
The unemployment rate in the youth group increased from 4.9% to 5.2% comparing to the same period as in 2015 and increased from 4.0% to 5.2% comparing to February in 2016. In adults group did not change comparing to the same period as in 2015.



Number and Rate of unemployment by level educational attainment

For level of educational attainment of unemployed persons in March 2016, it was found that most of them had higher level (113 thousand or 1.4%), followed by those with lower secondary level (1 0 4 thousand or 1.7%), upper secondary level (103 thousand or 1.7%), primary level (47 thousand or 0.5%) and no schooling and incomplete primary level (30 thousand or 0.3%).

Comparing to the same period in 2015, the result showed that the number of unemployed persons with lower secondary level increased of 26 thousand, no schooling and incomplete primary level of 10 thousand, and upper secondary level of 5 thousand. However, those with primary level decreased of 13 thousand and higher level of 8 thousand.



Number of unemployed by experience of work

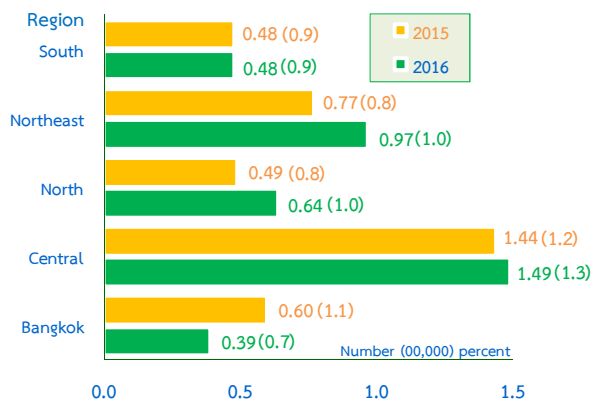
Out of 397 thousand, there were 172 thousand having never worked (92 thousand were male and 80 thousand were female) and 225 thousand had ever, among these, the number of unemployed persons who ever worked increased by 30 thousand (from 195 thousand to 225 thousand), comparing to the same period as in 2015. It was found that 225 thousand distributed in 3 sectors i.e. 97 thousand in services and trade, 85 thousand in manufacturing and 43 thousand in agriculture.

Unemploy persons Table 3 Number of by experience of work and level educational attainment in March 2016			
Unit : hundred thousand persons			
level education attainment	Total	Ever worked	Never worked
Total	3.97	2.25	1.72
1. No schooling/Incomplete primary	0.30	0.27	0.03
2. Primary	0.47	0.38	0.09
3. Lower secondary	1.04	0.73	0.31
4. Upper secondary	1.03	0.55	0.48
5. Higher level	1.13	0.32	0.81
-academic	0.73	0.20	0.53
-vocational	0.34	0.11	0.23
-academic studies	0.06	0.01	0.05
6. Others	-	-	-

The number of unemployed persons who never worked 172 thousand, it was found that most of them had higher level of 81 thousand, followed by those with upper secondary level of 48 thousand, lower secondary level of 31 thousand, primary level of 9 thousand and no schooling and incomplete primary level of 3 thousand.

The number of unemployed persons who ever worked 225 thousand, it was found that most of them had lower secondary level of 73 thousand, followed by those with upper secondary level of 55 thousand, primary level of 38 thousand, higher level of 32 thousand and no schooling and incomplete primary level of 27 thousand.

Figure H Comparing of number of unemployed and unemployment rate by region in March 2015 and 2016



Number of unemployed and unemployment rate by region

Concerning the number of unemployed and the unemployment rate by region, it was found that those in the Central was the highest with (149 thousand or 1.3%), followed by the Northeast (97 thousand or 1.0%), the North (64 thousand or 1.0%), the South (48 thousand or 0.9%) and Bangkok (39 thousand or 0.7%).

Comparing to the same period as in 2015, the unemployment of the whole kingdom increased of 19 thousand. However, concerning by region, it increases in the Northeast, the North, and the Central. But decrease in Bangkok. While the employed rate did not change in the South