

## Summary of the labor force survey in Thailand : December 2014

**Table 1 Comparison of population aged 15 years and over by labor force status**

Labor force status	Unit : million					
	2013*		2014*			
	Nov	Dec	Jan	Nov	Dec	
Persons over 15 years	54.58	54.62	54.65	54.99	55.02	
<b>1. Total labor force</b>	<b>38.76</b>	<b>38.97</b>	<b>38.43</b>	<b>38.47</b>	<b>38.96</b>	
1.1 employed	38.40	38.64	37.79	38.16	38.66	
1.2 unemployed	0.27	0.26	0.36	0.21	0.22	
1.3 seasonally	0.09	0.07	0.28	0.10	0.08	
<b>2. Not in labor force</b>	<b>15.82</b>	<b>15.65</b>	<b>16.22</b>	<b>16.52</b>	<b>16.06</b>	

\* The new series of Population Projection for Thailand, 2010 - 2040

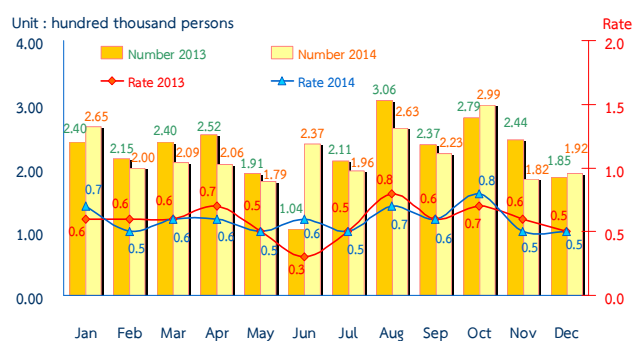
**Table 2 Comparison of number of employed persons by industry**

Industry	2013		2014		
	Nov	Dec	Jan	Nov	Dec
<b>Total</b>	<b>38.40</b>	<b>38.64</b>	<b>37.79</b>	<b>38.16</b>	<b>38.66</b>
<b>1. Agricultural</b>	<b>14.02</b>	<b>14.15</b>	<b>11.71</b>	<b>13.15</b>	<b>13.46</b>
- Agriculture, forestry and fishing	14.02	14.15	11.71	13.15	13.46
<b>2. Non-Agricultural</b>	<b>24.38</b>	<b>24.49</b>	<b>26.08</b>	<b>25.01</b>	<b>25.20</b>
- Manufacturing	6.04	6.33	6.30	6.35	6.62
- Construction	2.11	2.12	2.18	2.08	2.18
- Wholesale and retail trade; repair of motor vehicles and motorcycles	5.82	6.07	6.71	6.02	5.96
- Transportation and storage	1.26	1.08	1.28	1.27	1.11
- Accommodation and food service activities	2.52	2.46	2.69	2.60	2.60
- Financial and insurance activities	0.63	0.50	0.59	0.64	0.44
- Real estate activities	0.16	0.15	0.17	0.16	0.15
- Public administration defence and compulsory social security	1.49	1.53	1.65	1.59	1.53
- Education	1.18	1.14	1.16	1.11	1.24
- Human health and social work activities	0.68	0.61	0.64	0.78	0.68
- Other service activities	0.69	0.70	0.75	0.68	0.75
- Others	1.80	1.80	1.96	1.73	1.94

The results of Labor Force Survey in December 2014 showed that there are population, aged 15 years and over, of about 55.02 million persons. Of these 38.96 million were in the labor force or available for work (38.66 million were employed, 0.22 million were unemployed and 0.08 million were seasonally inactive labor force), while 16.06 million were not in the labor force or not available for work, such as housewives, students or elderly.

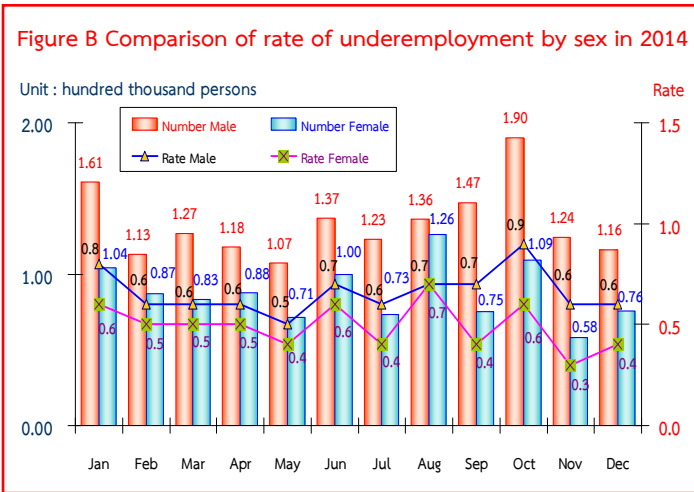
There were 38.66 million employed persons, which 13.46 and 25.20 million were in agriculture and non-agriculture sectors, respectively. Comparing with December in 2013, it was shown that the number of employed persons in agriculture sector decreased by 0.69 million, but non-agriculture sector increased by 0.71 million. This increment was found in various industries e.g. 0.29 million in manufacturing, 0.14 million in accommodation and food service activities, 0.10 million in education, 70 thousand in human health and social work activities, 60 thousand in construction, 50 thousand in other service activities and 30 thousand in transportation and storage. However, a decrease in some other industries was found e.g., 0.11 million in wholesale and retail trade, repair of motor vehicles and motorcycles and 60 thousand in financial and insurance activities. While the underemployed persons did not change in real estate activities and public administration defence and compulsory social security.

**Figure A Comparison of number and rate of underemployment in 2013 and 2014**



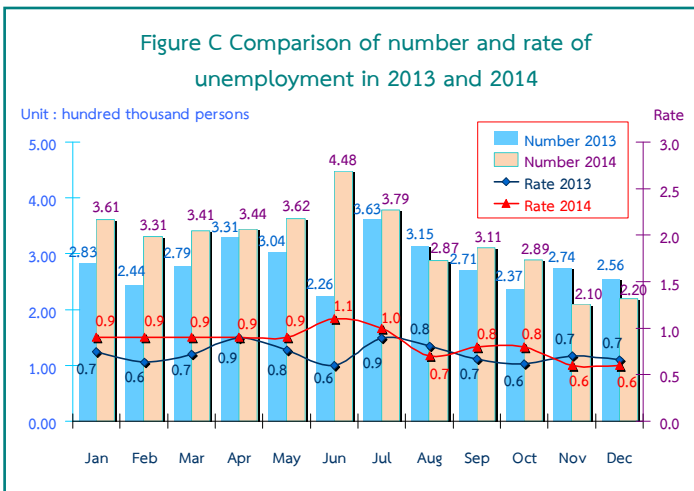
Remark : Underemployment worker is a worker who working less than 35 hours per week and available for additional work.

Considering the number of underemployed workers and available for additional work, there were 0.19 million or 0.5% of the total employed persons.

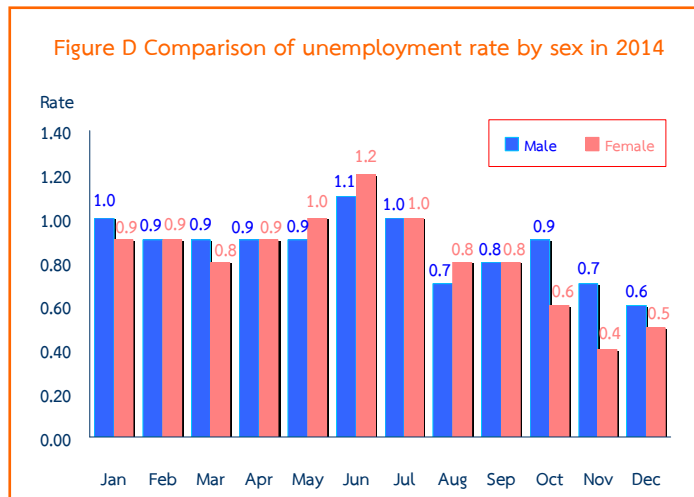


Considered underemployment rate by sex, it was shown that the overall underemployment rate of male was higher than female.

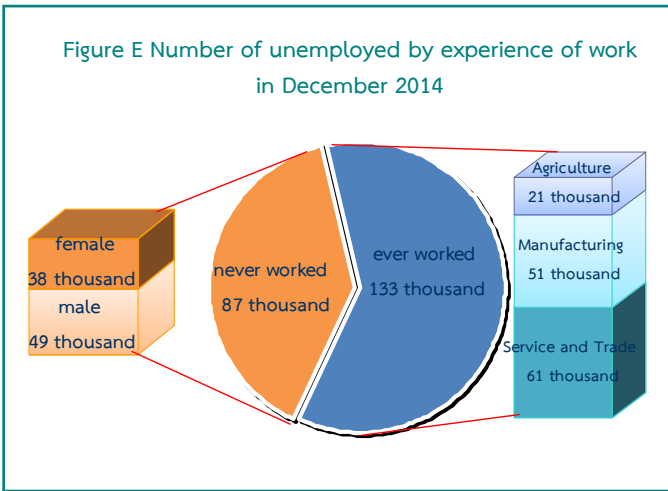
In December 2014, underemployment rate of male (0.6%) and female (0.4%).



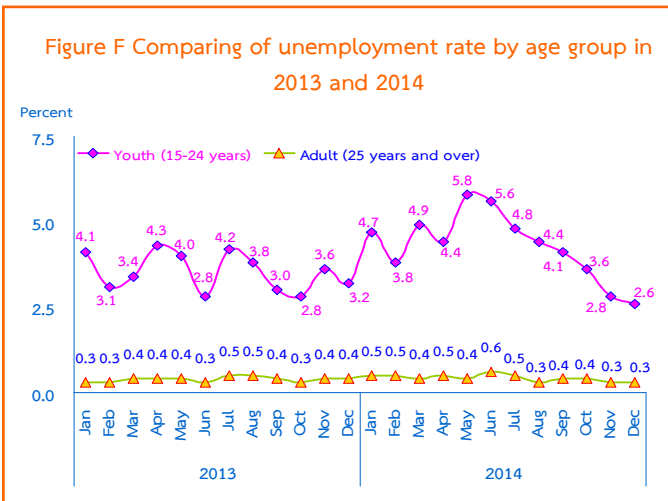
In December 2014, the total number of unemployed persons were 0.22 million or 0.6% of the total labor force and decreased of 36 thousand (from 0.26 million to 0.22 million) comparing to the same period as in 2013. But, it showed a increase of 10 thousand (from 0.21 million to 0.22 million) in November 2014.



Comparing to the unemployment rate by sex in December 2014, it was found that, unemployment rate of male was higher than female (0.6% and 0.5% respectively).

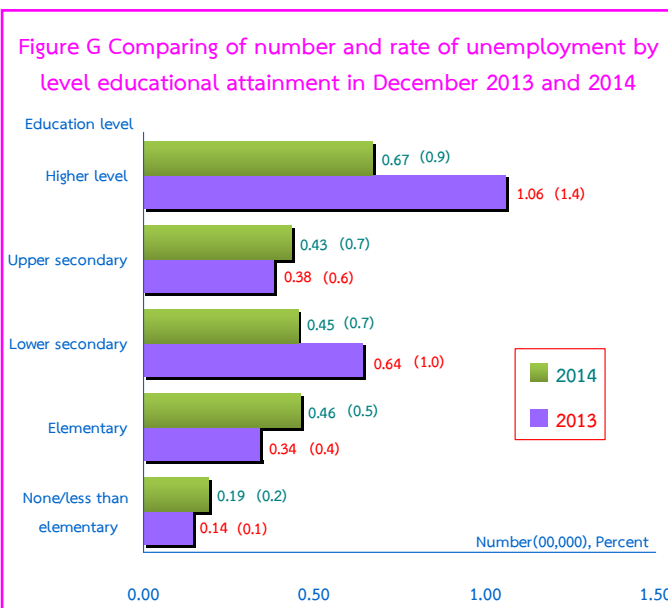


Out of 0.22 million, there were 87 thousand having never worked (49 thousand were male and 38 thousand were female) and 0.13 million had ever worked, among these, the number of unemployed persons who ever worked increased by 3 thousand (from 130 thousand to 133 thousand), comparing to the same period as in 2013. It was found that 0.13 million distributed in 3 sectors i.e. 61 thousand in services and trade, 51 thousand in manufacturing and 21 thousand in agriculture.



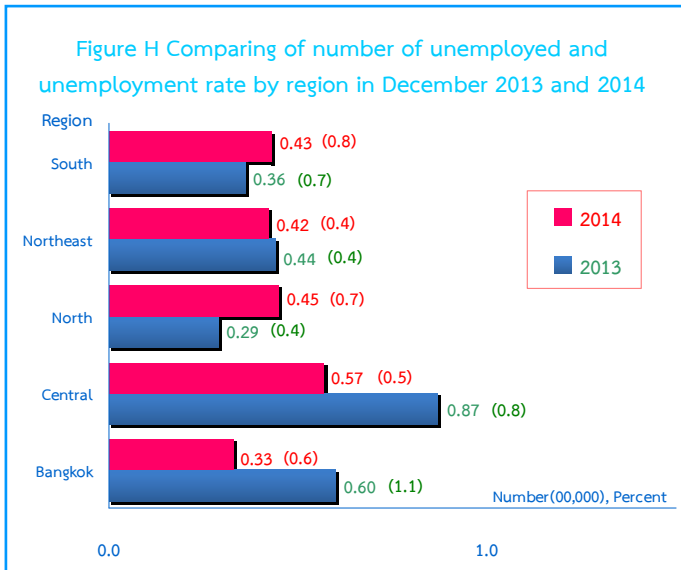
Regarding the unemployment rates by age groups, there were 2.6% in a youth group (aged 15-24 years) and 0.3% in adults group (age 25 years and over).

The unemployment rate in the youth group decreased from 3.2% to 2.6% comparing to the same period as in 2013, and decreased from 2.8 % to 2.6% comparing to November in 2014.



For level of educational attainment of unemployed persons in December 2014, it was found that most of them had higher level (67 thousand or 0.9%), followed by those with primary level (46 thousand or 0.5%), lower secondary level (45 thousand or 0.7%), upper secondary level (43 thousand or 0.7%) and illiterate and less than primary level (19 thousand or 0.2%).

Comparing to the same period in 2013, the result showed that the number of unemployed persons with primary level increased of 12 thousand and illiterate less than primary level and upper secondary level of increased of 5 thousand. However, those with higher level decreased of 39 thousand and lower secondary level of 19 thousand.



Concerning the number of unemployed and the unemployment rate by region, it was found that those in the Central was the highest with (57 thousand or 0.5%), followed by the North (45 thousand or 0.7%), the South (43 thousand or 0.8%), the Northeast (42 thousand or 0.4%) and Bangkok (33 thousand or 0.6%).

Comparing to the same period as in 2013, the number of unemployment persons of the whole kingdom decreased from 0.26 million to 0.22 million. And concerning by region, it decreases in almost regions except, the North and the South.