

Summary of the labor force survey in Thailand : September 2014

Table 1 Comparison of population aged 15 years and over by labor force status

Labor force status	2013*			2014*	
	Aug	Sep	Oct	Aug	Sep
	Unit : million				
Persons over 15 years	54.48	54.51	54.55	54.90	54.93
1. Total labor force	38.55	38.55	38.39	38.72	38.85
1.1 employed	38.20	38.22	38.02	38.37	38.45
1.2 unemployed	0.31	0.27	0.24	0.28	0.31
1.3 seasonally	0.04	0.06	0.13	0.07	0.09
2. Not in labor force	15.93	15.96	16.16	16.18	16.08

* The new series of Population Projection for Thailand, 2010 - 2040

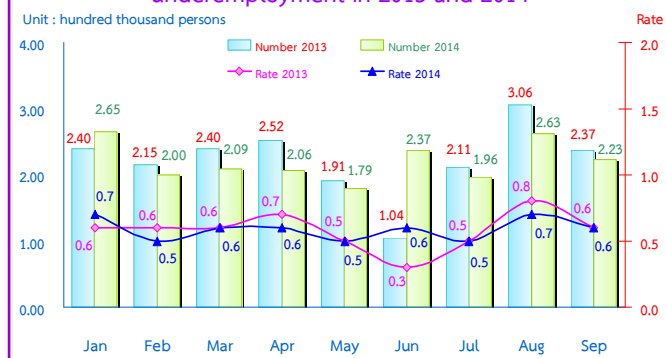
Table 2 Comparison of number of employed persons by industry

Industry	2013			2014	
	Aug	Sep	Oct	Aug	Sep
Total	38.20	38.22	38.02	38.37	38.45
1. Agricultural	13.92	13.42	12.85	13.64	13.50
- Agriculture, forestry and fishing	13.92	13.42	12.85	13.64	13.50
2. Non-Agricultural	24.27	24.80	25.17	24.73	24.95
- Manufacturing	6.14	6.39	6.47	6.31	6.28
- Construction	2.03	2.31	2.36	2.00	2.20
- Wholesale and retail trade; repair of motor vehicles and motorcycles	5.83	6.02	6.28	6.23	6.00
- Transportation and storage	1.12	1.08	1.17	1.21	1.09
- Accommodation and food service activities	2.48	2.41	2.42	2.52	2.58
- Financial and insurance activities	0.50	0.53	0.51	0.53	0.47
- Real estate activities	0.15	0.17	0.17	0.15	0.15
- Public administration defence and compulsory social security	1.58	1.54	1.63	1.51	1.56
- Education	1.13	1.07	1.10	1.12	1.13
- Human health and social work activities	0.70	0.63	0.62	0.76	0.63
- Other service activities	0.63	0.74	0.61	0.69	0.83
- Others	1.98	1.92	1.83	1.70	2.03

The results of Labor Force Survey in September 2014 showed that there are population, aged 15 years and over, of about 54.93 million persons. Of these 38.85 million were in the labor force or available for work (38.45 million were employed, 0.31 million were unemployed and 0.09 million were seasonally inactive labor force), while 16.08 million were not in the labor force or not available for work, such as housewives, students or elderly.

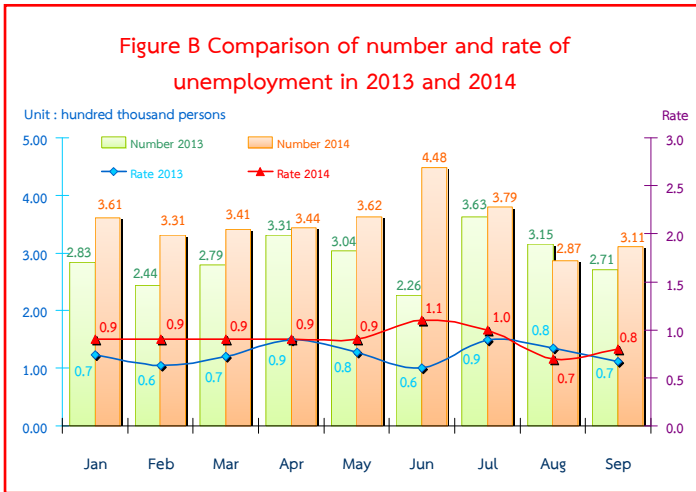
There were 38.45 million employed persons, which 13.50 and 24.95 million were in agriculture and non-agriculture sectors, respectively. Comparing with September in 2013, it was shown that the number of employed persons in agriculture sector increased by 80 thousand, and non-agriculture sector increased by 0.15 million. This increment was found in various industries e.g. 0.17 million in accommodation and food service activities, 90 thousand in other service activities, 60 thousand in education, 20 thousand public administration defence and compulsory social security, 10 thousand in transportation and storage. However, an decrease in some other industries was found e.g., 0.11 million in manufacturing and construction, 60 thousand in financial and insurance activities, 20 thousand in wholesale and retail trade, repair of motor vehicles and motorcycles and real estate activities and the rest shared in the other industries.

Figure A Comparison of number and rate of underemployment in 2013 and 2014

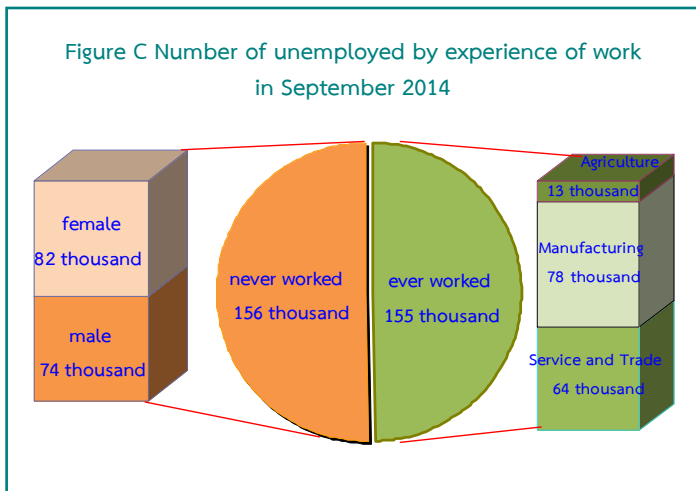


Remark : Underemployment worker is a worker who working less than 35 hours per week and available for additional work.

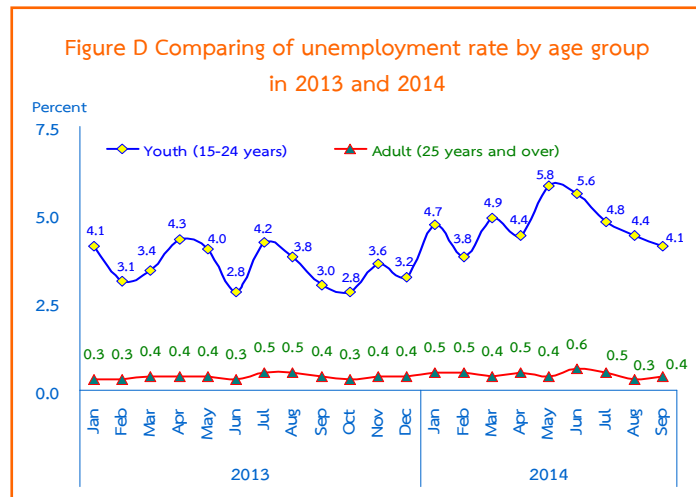
Considering the number of underemployed workers and available for additional work, there were 0.22 million or 0.6% of the total employed persons.



In September 2014, the total number of unemployed persons were 0.31 million or 0.8% of the total labor force and increased of 40 thousand (from 0.27 million to 0.31 million) comparing to the same period as in 2013. And, it showed a increase of 24 thousand (from 0.29 million to 0.31 million) in August 2014.



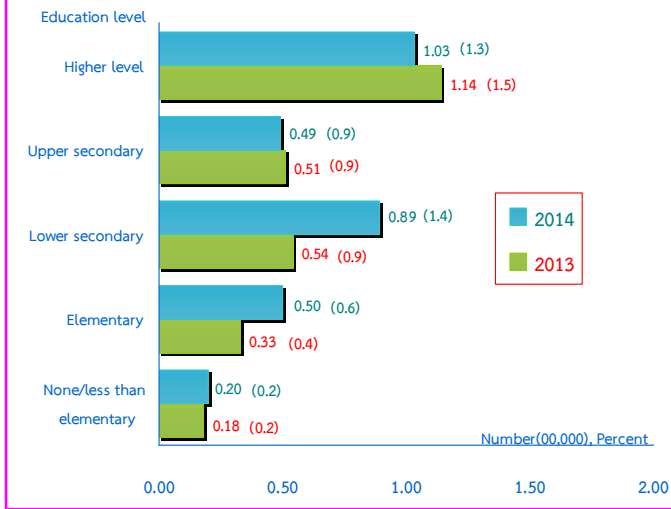
Out of 0.31 million, there were 0.16 million having never worked (74 thousand were male and 82 thousand were female) and 0.15 million had ever, among these, the number of unemployed persons who ever worked increased by 31 thousand (from 0.12 million to 0.15 million), comparing to the same period as in 2013. It was found that 0.15 million distributed in 3 sectors i.e. 78 thousand in manufacturing, 64 thousand in services and trade and 13 thousand in agriculture.



Regarding the unemployment rates by age groups, there were 4.1% in a youth group (aged 15-24 years) and 0.4% in adults group (age 25 years and over).

The unemployment rate in the youth group increased from 3.0% to 4.1% comparing to the same period as in 2013, but decreased from 4.4% to 4.1% comparing to August in 2014.

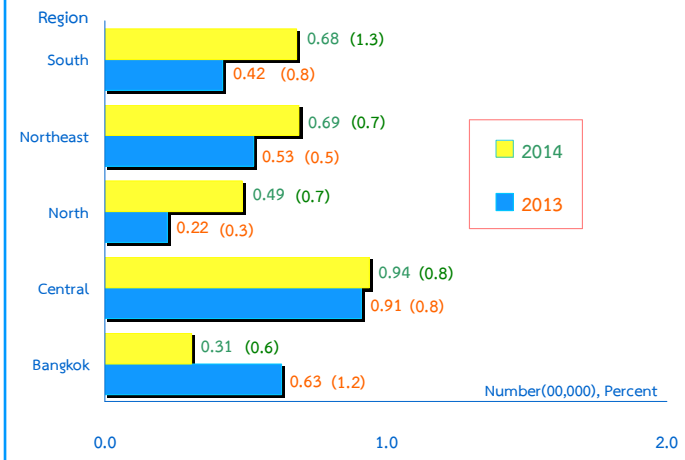
Figure E Comparing of number and rate of unemployment by level educational attainment in September 2013 and 2014



For level of educational attainment of unemployed persons in September 2014, it was found that most of them had higher level (0.10 million or 1.3%), followed by those with lower secondary level (89 thousand or 1.4%), primary level (50 thousand or 0.6%), upper secondary level (49 thousand or 0.9%) and illiterate and less than primary level (20 thousand or 0.2%).

Comparing to the same period in 2013, the result showed that the number of unemployed persons with higher level decreased of 11 thousand and upper secondary level of 2 thousand. However, those with lower secondary level increased of 35 thousand, primary level of 17 thousand and illiterate less than primary level of 2 thousand.

Figure F Comparing of number of unemployed and unemployment rate by region in September 2013 and 2014



Concerning the number of unemployed and the unemployment rate by region, it was found that those in the Central was the highest with (94 thousand or 0.8%), followed by the Northeast (69 thousand or 0.7%), the South (68 thousand or 1.3%), the North (49 thousand or 0.7%) and Bangkok (31 thousand or 0.6%).

Comparing to the same period as in 2013, the number of unemployment persons of the whole kingdom increased from 0.27 million to 0.31 million. However, concerning by region, it changes in some regions such as, an increase in the North, the South, the Northeast and the Central, but a decrease in Bangkok.