

Summary of the labor force survey in Thailand : June 2014

Table 1 Comparison of population aged 15 years and over by labor force status

Unit : million

Labor force status	2013			2014	
	May	June	July	May	June
Persons over 15 years	54.36	54.40	54.45	54.79	54.83
1. Total labor force	38.79	39.36	38.96	38.37	38.93
1.1 employed	38.20	39.07	38.57	37.76	38.38
1.2 unemployed	0.31	0.23	0.36	0.36	0.45
1.3 seasonally	0.28	0.06	0.03	0.25	0.10
2. Not in labor force	15.57	15.04	15.49	16.42	15.90

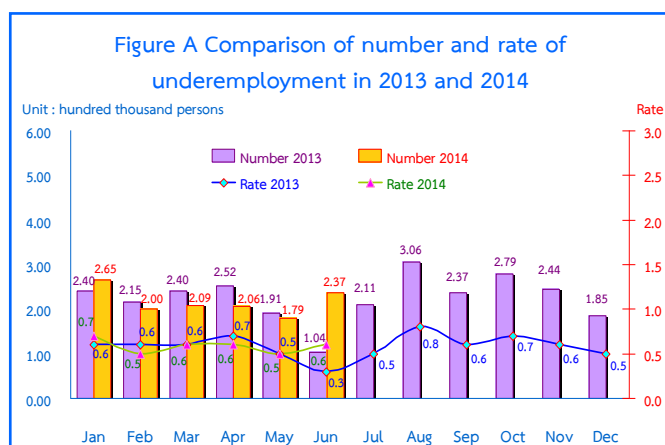
The results of Labor Force Survey in June 2014 showed that there are population, aged 15 years and over, of about 54.83 million persons. Of these 38.93 million were in the labor force or available for work (38.38 million were employed, 0.45 million were unemployed and 0.10 million were seasonally inactive labor force), while 15.90 million were not in the labor force or not available for work, such as housewives, students or elderly.

Table 2 Comparison of number of employed persons by industry

Unit : Million

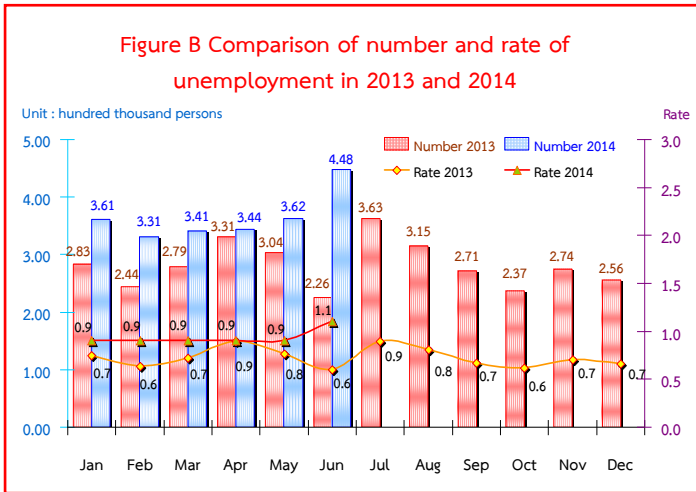
Industry	2013			2014	
	May	June	July	May	June
Total	38.20	39.07	38.57	37.76	38.38
1. Agricultural	12.82	14.16	13.97	12.30	13.60
- Agriculture, forestry and fishing	12.82	14.16	13.97	12.30	13.60
2. Non-Agricultural	25.38	24.91	24.60	25.46	24.78
- Manufacturing	6.25	6.32	6.44	6.49	6.27
- Construction	2.53	2.21	2.17	2.28	2.22
- Wholesale and retail trade; repair of motor vehicles and motorcycles	6.26	6.04	5.98	6.25	5.70
- Transportation and storage	1.04	1.16	1.11	1.11	1.22
- Accommodation and food service activities	2.68	2.58	2.41	2.62	2.47
- Financial and insurance activities	0.54	0.55	0.54	0.52	0.51
- Real estate activities	0.15	0.15	0.20	0.16	0.15
- Public administration defence and compulsory social security	1.62	1.59	1.59	1.63	1.62
- Education	1.06	1.13	1.10	1.10	1.16
- Human health and social work activities	0.67	0.61	0.58	0.75	0.65
- Other service activities	0.63	0.71	0.61	0.68	0.82
- Others	1.95	1.86	1.87	1.87	1.99

There were 38.38 million employed persons, which 13.60 and 24.78 million were in agriculture and non-agriculture sectors, respectively. Comparing with June in 2013, it was shown that the number of employed persons in agriculture sector decreased by 0.56 million, and non-agriculture sector decreased by 0.13 million. This decrement was found in various industries e.g. 0.34 million in wholesale and retail trade, repair of motor vehicles and motorcycles, 0.11 million in accommodation and food service activities, 50 thousand in manufacturing, 40 thousand in financial and insurance activities. However, an increase in some other industries was found e.g., 0.11 million in other service activities, 60 thousand in transportation and storage, 40 thousand in human health and social work activities, 30 thousand in public administration defence and compulsory social security and in education and 10 thousand in construction, while the employed persons did not change in real estate activities and the rest shared in the other industries.

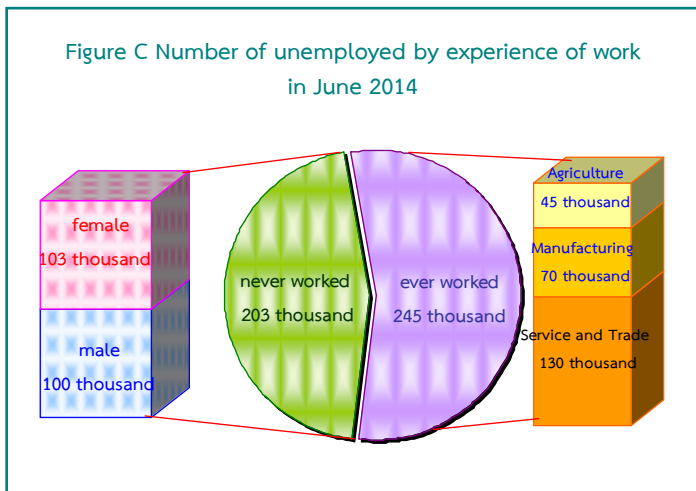


Remark : Underemployment worker is a worker who working less than 35 hours per week and available for additional work.

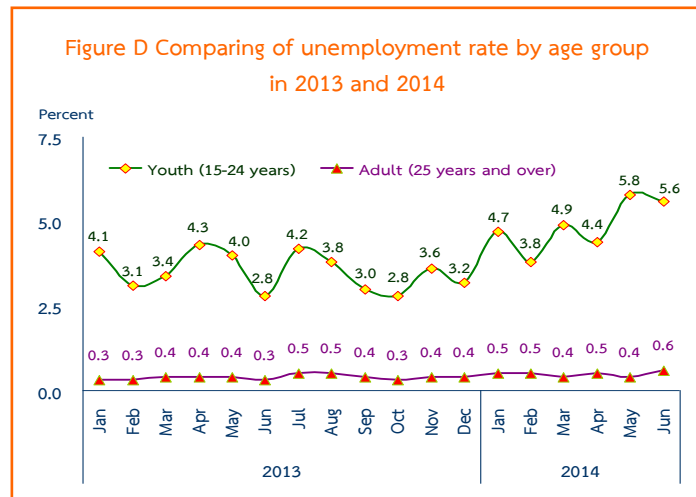
Considering the number of underemployed workers and available for additional work, there were 0.24 million or 0.6% of the total employed persons.



In June 2014, the total number of unemployed persons were 0.45 million or 1.1% of the total labor force and increased of 0.22 million (from 0.23 million to 0.45 million) comparing to the same period as in 2013. And, it showed an increase of 86 thousand (from 0.36 million to 0.45 million) in May 2014.



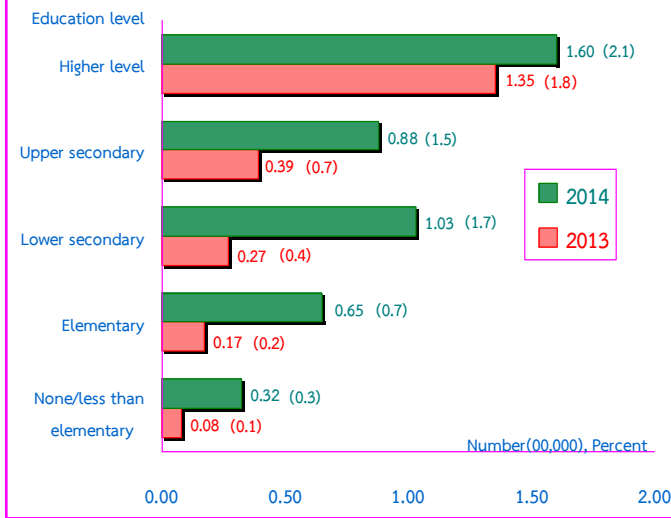
Out of 0.45 million, there were 0.20 million having never worked (100 thousand were male and 103 thousand were female) and 0.25 million had ever worked, among these, the number of unemployed persons who ever worked increased by 0.16 million (from 90 thousand to 0.25 million), comparing to the same period as in 2013. It was found that 0.25 million distributed in 3 sectors i.e. 0.13 million in services and trade, 70 thousand in manufacturing and 45 thousand in agriculture.



Regarding the unemployment rates by age groups, there were 5.6% in a youth group (aged 15-24 years) and 0.6% in adults group (age 25 years and over).

The unemployment rate in the youth group increased from 2.8% to 5.6% comparing to the same period as in 2013, but decreased from 5.8% to 5.6% comparing to May in 2014.

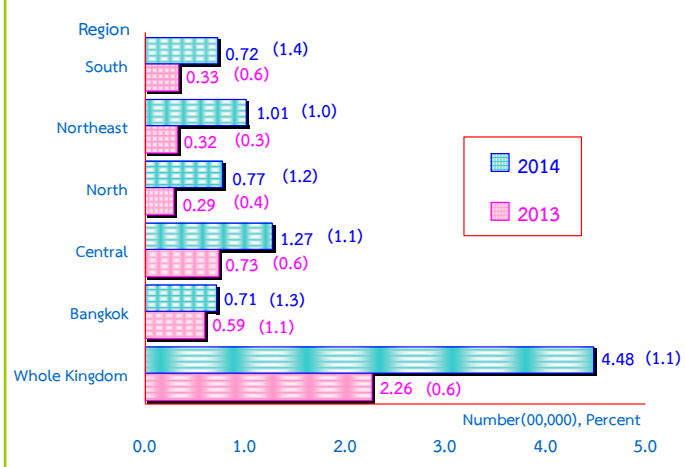
Figure E Comparing of number and rate of unemployment by level educational attainment in June 2013 and 2014



For level of educational attainment of unemployed persons in June 2014, it was found that most of them had higher level (0.16 million or 2.1%), followed by those with lower secondary level (0.10 million or 1.7%), upper secondary level (88 thousand or 1.5%), primary level (65 thousand or 0.7%) and illiterate and less than primary level (32 thousand or 0.3%).

Comparing to the same period in 2013, the result showed that the number of unemployed persons with lower secondary level increased of 76 thousand, upper secondary level of 49 thousand, primary level of 48 thousand, higher level of 25 thousand and illiterate less than primary level of 24 thousand.

Figure F Comparing of number of unemployed and unemployment rate by region in June 2013 and 2014



Concerning the unemployment rate by region, it was found that those in the Central was the highest with (0.13 million or 1.1%), followed by the Northeast (0.10 million or 1.0%), the North (77 thousand or 1.2%), the South (72 thousand or 1.4%) and Bangkok (71 thousand or 1.3%).

Comparing to the same period as in 2013, the number of unemployment persons of the whole kingdom increased from 0.23 million to 0.45 thousand. And concerning by region, it increases in all regions.