

Summary of the labor force survey in Thailand : October 2012

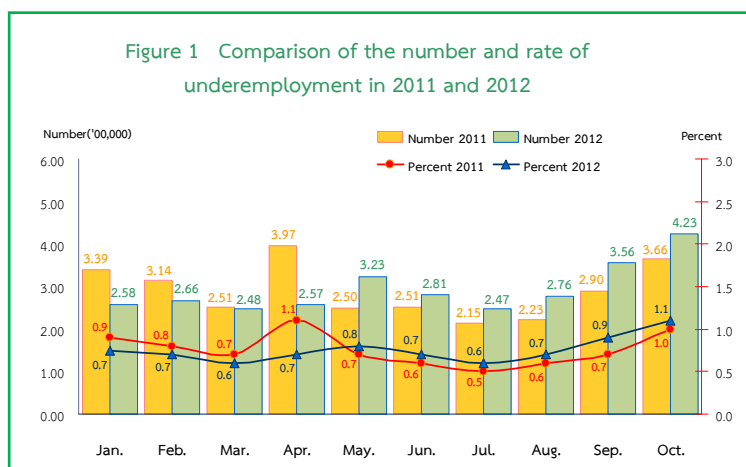
Table 1 Comparison of the population aged 15 years and over by labor force status					
Unit: million					
Labor force status	2011			2012	
	Sep.	Oct.	Nov.	Sep.	Oct.
Persons over 15 years	54.11	54.15	54.19	54.62	54.66
1. Total labor force	39.23	38.82	39.45	39.44	39.49
1.1 employed	38.86	38.30	38.98	39.15	39.21
1.2 unemployed	0.30	0.22	0.32	0.25	0.22
1.3 seasonally	0.07	0.30	0.15	0.04	0.06
2. Not in labor force	14.88	15.33	14.74	15.18	15.17

The results of Labor Force Survey of October in 2012, it was found that for population aged 15 years and over of 54.66 million persons. 39.49 million were in the labor force or available for work (39.21 million were employed, 0.22 million were unemployed and 60 thousand were seasonally inactive labor force). While 15.17 million were not in the labor force or not available for work such as housewives, students or seniors.

Table 2 Comparison of the number of employed persons by industry					
Unit: million					
Industry	2011			2012	
	Sep.	Oct.	Nov.	Sep.	Oct.
Total	38.86	38.30	38.98	39.15	39.21
1. Agricultural	14.76	14.28	15.53	15.69	14.87
- Agriculture, forestry and fishing	14.76	14.28	15.53	15.69	14.87
2. Non-Agricultural	24.10	24.02	23.45	23.46	24.34
- Manufacturing	5.50	5.62	5.15	5.72	5.72
- Construction	2.29	2.31	2.05	2.50	2.56
- Wholesale and retail trade; repair of motor vehicles and motorcycles	6.05	6.07	6.26	5.65	6.13
- Transportation and storage	0.95	1.10	0.96	1.00	0.92
- Accommodation and food service activities	2.88	2.41	2.23	2.37	2.51
- Financial and insurance activities	0.38	0.43	0.44	0.37	0.46
- Real estate activities	0.13	0.08	0.09	0.11	0.14
- Public administration defence and compulsory social security	1.57	1.67	1.80	1.73	1.71
- Education	1.21	1.22	1.37	1.09	1.15
- Human health and social work activities	0.67	0.66	0.65	0.64	0.66
- Other service activities	0.85	0.78	0.75	0.66	0.67
- Others	1.62	1.67	1.70	1.62	1.71

The number of employed persons 39.21 million were in agriculture sector 14.87 million sector 24.34 million. Comparing with October in 2011, it was showed that the number of employed persons in agriculture non-agriculture sector increased by 0.59 million and 0.32 million respectively. This increment was found in various industries, Construction increased by 0.25 million, followed by Manufacturing and Accommodation and food service activities 0.10 million, Wholesale and Retail trade and Repair of motor vehicles and motorcycles and Real estate activities 60 thousand. While various industries were decreased, Transportation and storage 0.18 million, Other service activities (Health service activities, Pets care service and Laundry & Dry cleaning service) 0.11 million and Education 70 thousand. The rest shared in the other industries.

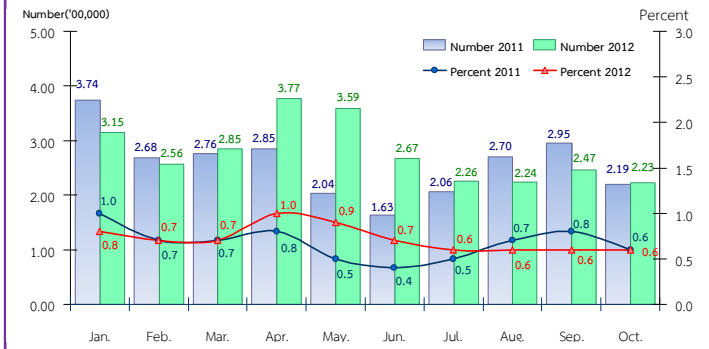
Figure 1 Comparison of the number and rate of underemployment in 2011 and 2012



Considering the number of the employed persons who don't effectively work and available for additional work, that called this group is the underemployment worker (0.42 million or about 1.1% of the total employed persons). Although this group is employed persons but they have enough free time and available for additional work for more earning.

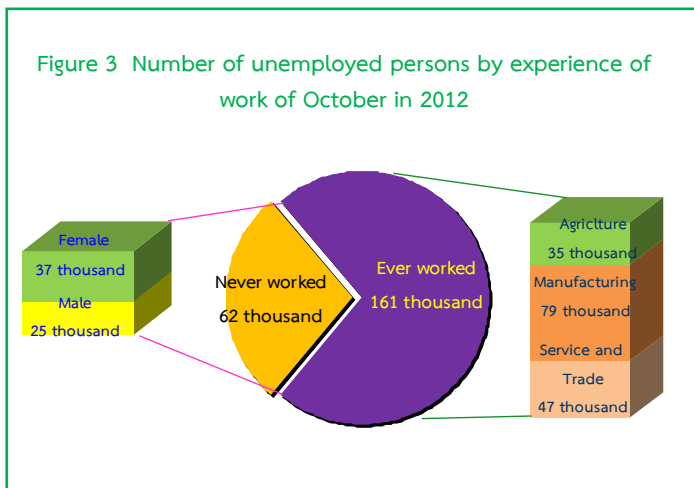
Remark : Underemployment worker is a worker who working less than 35 hours per week and available for additional work.

Figure 2 Comparing the number and rate of unemployment in 2011 and 2012



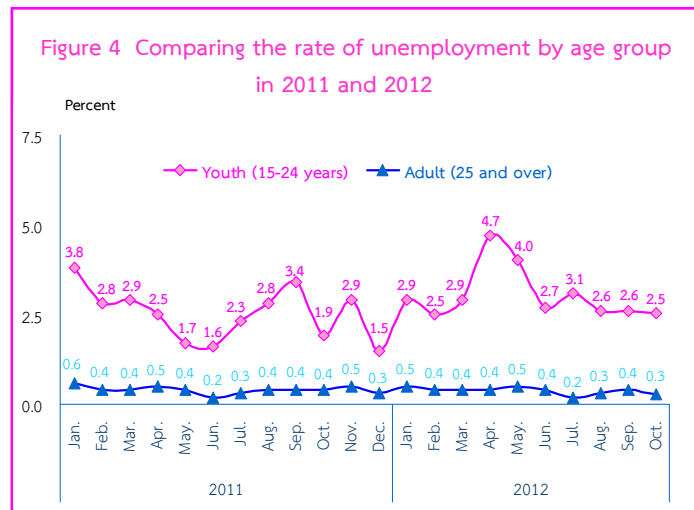
In October 2012, there were the total number of unemployed persons 0.22 million or 0.6%. Comparing to the same period of 2011, the number of unemployed persons increased by 4 thousand (from 219 thousand to 223 thousand). But comparison with September in 2012, the number of unemployed persons decreased by 24 thousand (from 247 thousand to 223 thousand).

Figure 3 Number of unemployed persons by experience of work of October in 2012



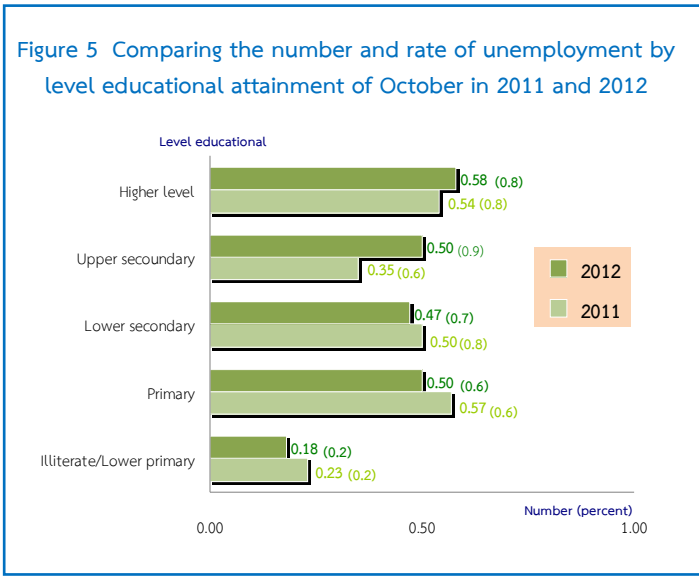
Regarding the unemployed persons by experience of work, it was found that 62 thousand had never worked and 0.16 million had ever worked. Comparing to the same period of 2011, the number of unemployed persons who ever worked decreased by 8 thousand (from 169 thousand to 161 thousand). There were 79 thousand from the Manufacturing sector, 47 thousand from the Trade and Services sector and 35 thousand from Agriculture sector.

Figure 4 Comparing the rate of unemployment by age group in 2011 and 2012



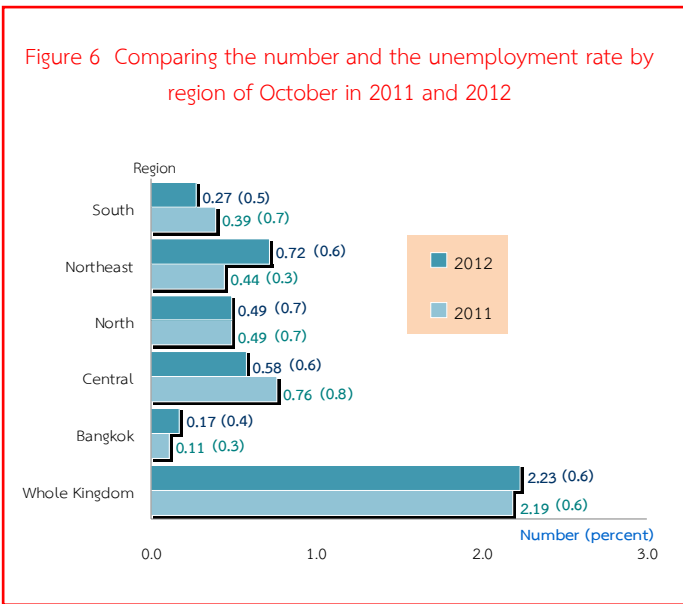
The unemployment rates by age groups, there were 2.5% in a youth group (aged 15-24 years) which unemployment rate was high in this group and 0.3% in adults group (age 25 years and over). Comparing to the same period of 2011, the youth group increased from 1.9% to 2.5% but comparing with September in 2012, the youth group decreased from 2.6% to 2.5%.

Figure 5 Comparing the number and rate of unemployment by level educational attainment of October in 2011 and 2012



Education level attainment of the unemployed persons of October in 2012, it was found that the number of unemployed persons with Higher level was the highest 58 thousand (0.8%), followed by Upper secondary level 50 thousand (0.9%), Primary level 50 thousand (0.6%), Lower secondary level 47 thousand (0.7%) and Illiterate and Less than primary level 18 thousand (0.2%). Comparing to the same period of 2011, it was showed that the number of unemployed persons in Primary level decreased by 7 thousand, Illiterate and Less than primary level 5 thousand and Lower secondary level 3 thousand. While Upper secondary level and Higher level increased by 15 thousand and 4 thousand respectively.

Figure 6 Comparing the number and the unemployment rate by region of October in 2011 and 2012



Concerning the unemployment rates by region, it was found that the North was the highest at 0.7%, followed by the Central and the Northeast (0.6%), the South (0.5%) and Bangkok (0.4%). Comparing to the same period of 2011, the unemployment rates of whole kingdom unchanged but concerning by region, it was showed that the Central and the South decreased. While the Northeast and Bangkok increased. For the North unchanged.

Key labor force indicators

																					Number (Thousand persons)					
Month/Year	Persons in labor force	Seasonally inactive	Unemployed	Uuder-	Uuder-	Unemploy- ment Rates	Labor force participation Rates	Persons in labor force	Seasonally inactive	Unemployed	Uuder-	Uuder-	Unemploy- ment Rates	Labor force participation Rates	Persons in labor force	Seasonally inactive	Unemployed	Uuder-	Uuder-	Unemploy- ment Rates	Labor force participation Rates					
				employment worker	employment worker						employment worker	employment worker						employment worker	employment worker							
				Rates	Rates						Rates	Rates						Rates	Rates							
Total							Male							Female												
Oct. 2009	38,245.8	173.9	410.5	611.4	1.6	1.1	72.1	20,932.5	78.8	233.3	380.2	1.8	1.1	81.2	17,313.3	95.1	177.2	231.2	1.4	1.0	63.6					
Oct. 2010	38,474.0	155.1	354.8	444.8	1.2	0.9	71.7	21,034.6	71.3	208.4	264.2	1.3	1.0	80.7	17,439.4	83.8	146.4	180.6	1.0	0.8	63.3					
2011																										
Aug.	39,761.3	53.2	270.4	223.6	0.6	0.7	73.5	21,231.3	15.7	139.0	130.6	0.6	0.7	80.8	18,530.0	37.6	131.4	93.0	0.5	0.7	66.7					
Sep.	39,233.2	73.2	295.3	290.5	0.7	0.8	72.5	21,266.0	41.1	160.9	178.9	0.8	0.8	80.9	17,967.2	32.2	134.3	111.5	0.6	0.7	64.6					
Oct.	38,816.9	299.2	219.2	366.3	1.0	0.6	71.7	20,989.3	158.3	125.0	229.3	1.1	0.6	79.8	17,827.6	140.9	94.3	136.9	0.8	0.5	64.0					
Nov.	39,452.7	152.1	322.0	250.8	0.6	0.8	72.8	21,199.7	64.6	186.4	149.4	0.7	0.9	80.5	18,253.0	87.5	135.6	101.4	0.6	0.7	65.5					
Dec.	39,784.9	119.6	171.7	194.0	0.5	0.4	73.4	21,415.1	61.8	91.8	111.6	0.5	0.4	81.3	18,369.8	57.8	79.8	82.4	0.5	0.4	65.9					
2012																										
Jan.	38,619.2	377.8	314.5	258.2	0.7	0.8	71.1	21,123.8	182.6	197.9	139.8	0.7	0.9	80.1	17,495.4	195.2	116.6	118.4	0.7	0.7	62.7					
Feb.	38,798.1	484.2	256.3	266.8	0.7	0.7	71.4	21,128.1	246.9	159.1	142.7	0.7	0.8	80.1	17,670.1	237.2	97.2	124.1	0.7	0.6	63.3					
Mar.	38,955.1	475.4	284.7	248.2	0.6	0.7	71.7	21,288.8	247.3	169.6	152.6	0.7	0.8	80.6	17,666.3	228.1	115.1	95.7	0.6	0.7	63.2					
Apr.	38,909.3	389.0	376.5	257.5	0.7	1.0	71.5	21,302.6	163.0	203.0	138.7	0.7	1.0	80.6	17,606.7	226.0	173.6	118.9	0.7	1.0	62.9					
May.	39,007.0	379.5	359.0	323.6	0.8	0.9	71.6	21,233.8	176.4	199.6	199.4	1.0	0.9	80.3	17,773.2	203.1	159.5	124.2	0.7	0.9	63.5					
Jun.	39,883.2	87.1	266.9	281.4	0.7	0.7	73.2	21,535.2	32.9	156.5	162.2	0.8	0.7	81.3	18,348.0	54.2	110.3	119.2	0.7	0.6	65.5					
Jul.	40,097.6	17.8	226.0	247.5	0.6	0.6	73.5	21,571.9	6.6	127.1	142.3	0.7	0.6	81.4	18,525.7	11.2	98.8	105.3	0.6	0.5	66.1					
Aug.	39,800.8	33.5	224.2	275.7	0.7	0.6	72.9	21,474.7	12.8	122.5	146.4	0.7	0.6	81.0	18,326.1	20.6	101.8	129.2	0.7	0.6	65.3					
Sep.	39,438.8	39.2	247.0	356.5	0.9	0.6	72.2	21,384.9	27.0	150.7	207.3	1.0	0.7	80.6	18,053.9	12.3	96.3	149.1	0.8	0.5	64.3					
Oct.	39,489.7	58.3	222.5	422.9	1.1	0.6	72.2	21,372.9	30.5	126.5	286.3	1.3	0.6	80.5	18,116.8	27.7	96.0	136.6	0.8	0.5	64.4					

Source : The labor force survey of October in 2012

Remark : Underemployment worker means a worker who working less than 35 hours per week and available for additional work

: Underemployment worker rate means (The total underemployment worker / The total employed persons)x100