

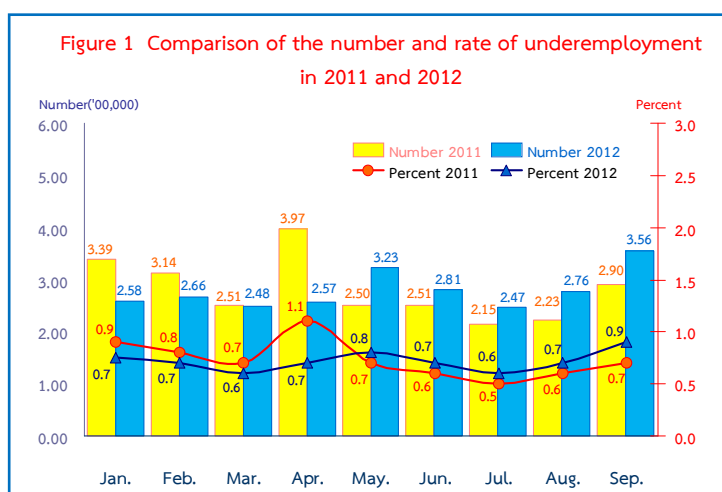
Summary of the labor force survey in Thailand : September 2012

Table 1 Comparison of the population aged 15 years and over by labor force status					
Unit: million					
Labor force status	2011			2012	
	Aug.	Sep.	Oct.	Aug.	Sep.
Persons over 15 years	54.07	54.11	54.15	54.58	54.62
1. Total labor force	39.76	39.23	38.82	39.80	39.44
1.1 employed	39.44	38.86	38.30	39.54	39.15
1.2 unemployed	0.27	0.30	0.22	0.22	0.25
1.3 seasonally	0.05	0.07	0.30	0.04	0.04
2. Not in labor force	14.31	14.88	15.33	14.78	15.18

The results of Labor Force Survey of September in 2012, it was found that for population aged 15 years and over of 54.62 million persons. 39.44 million were in the labor force or available for work (39.15 million were employed, 0.25 million were unemployed and 39 thousand were seasonally inactive labor force). While 15.18 million were not in the labor force or not available for work such as housewives, students or seniors.

Table 2 Comparison of the number of employed persons by industry					
Unit: million					
Industry	2011			2012	
	Aug.	Sep.	Oct.	Aug.	Sep.
Total	39.44	38.86	38.30	39.54	39.15
1. Agricultural	16.03	14.76	14.28	16.46	15.69
- Agriculture, forestry and fishing	16.03	14.76	14.28	16.46	15.69
2. Non-Agricultural	23.41	24.10	24.02	23.08	23.46
- Manufacturing	5.41	5.50	5.62	5.68	5.72
- Construction	2.15	2.29	2.31	2.30	2.50
- Wholesale and retail trade; repair of motor vehicles and motorcycles	5.95	6.05	6.07	5.76	5.65
- Transportation and storage	0.91	0.95	1.10	1.07	1.00
- Accommodation and food service activities	2.53	2.88	2.41	2.22	2.37
- Financial and insurance activities	0.47	0.38	0.43	0.37	0.37
- Real estate activities	0.12	0.13	0.08	0.13	0.11
- Public administration defence and compulsory social security	1.48	1.57	1.67	1.59	1.73
- Education	1.34	1.21	1.22	1.20	1.09
- Human health and social work activities	0.72	0.67	0.66	0.61	0.64
- Other service activities	0.70	0.85	0.78	0.59	0.66
- Others	1.63	1.62	1.67	1.56	1.62

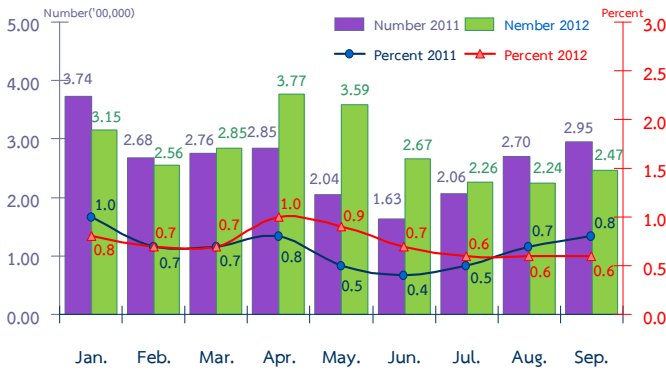
The number of employed persons 39.15 million were in agriculture sector 15.69 million and non-agriculture sector 23.46 million. Comparing with September in 2011, it was showed that the number of employed persons in agriculture sector increased by 0.93 million but non-agriculture sector decreased by 0.64 million. This decrement was found in various industries, Accommodation and food service activities sector decreased by 0.51 million, followed by Wholesale and Retail trade and Repair of motor vehicles and motorcycles 0.40 million, Other service activities sector (Health service activities, Pets care service and Laundry & Dry cleaning service) decreased by 0.19 million and Education 0.12 million. While various industries were increased, Manufacture 0.22 million, Construction 0.21 million and Public administration defence and compulsory social security 0.16 million. The rest shared in the other industries.



Remark : Underemployment worker is a worker who working less than 35 hours per week and available for additional work.

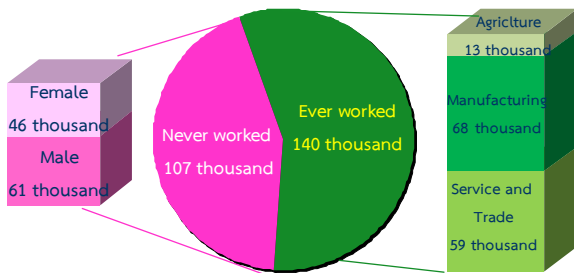
Considering the number of the employed persons who don't effectively work and available for additional work, that called this group is the underemployment worker (0.36 million or about 0.9% of the total employed persons). Although this group is employed persons but they have enough free time and available for additional work for more earning.

Figure 2 Comparing the number and rate of unemployment in 2011 and 2012



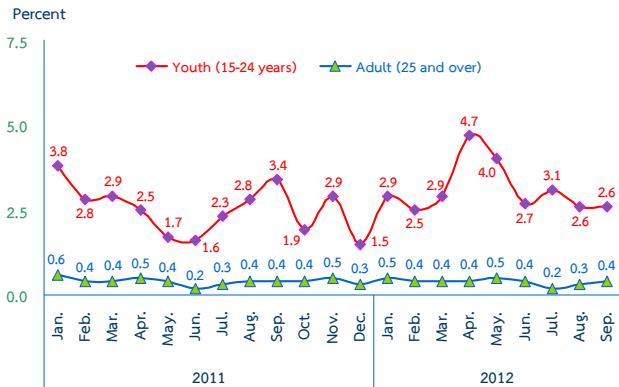
In September 2012, there were the total number of unemployed persons 0.25 million or 0.6%. Comparing to the same period of 2011, the number of unemployed persons decreased by 48 thousand (from 295 thousand to 247 thousand). But comparison with August in 2012, the number of unemployed persons increased by 23 thousand (from 224 thousand to 247 thousand).

Figure 3 Comparing the number of unemployed persons by experience of work of September in 2012



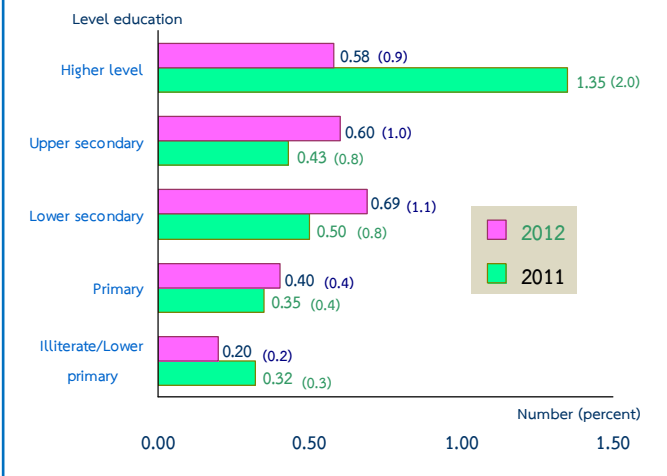
Regarding the unemployed persons by experience of work, it was found that 0.11 million had never worked and 0.14 million had ever worked. Comparing to the same period of 2011, the number of unemployed persons decreased by 5 thousand (from 145 thousand to 140 thousand). There were 68 thousand from the Manufacturing sector, 59 thousand from the Trade and Services sector and 13 thousand from Agriculture sector.

Figure 4 Comparing the rate of unemployment by age group in 2011 and 2012



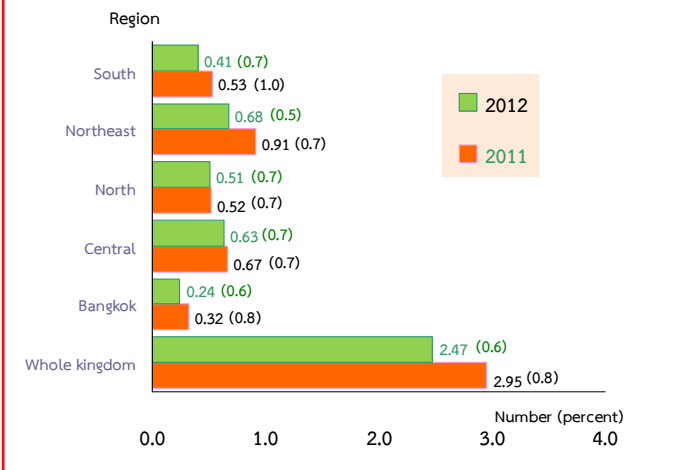
The unemployment rates by age groups, there were 2.6% in a youth group (aged 15-24 years) which unemployment rate was high in this group and 0.4% in adults group (age 25 years and over). Comparing to the same period of 2011, the youth group decreased from 3.4% to 2.6% and comparing with August in 2012, the youth group unchanged at 2.6%.

Figure 5 Comparing the number and rate of unemployment by level educational attainment of September in 2011 and 2012



Education level attainment of the unemployed persons of September in 2012, it was found that the number of unemployed persons with Lower secondary level was the highest 69 thousand (1.1%), followed by Upper secondary level 60 thousand (1.0%), Higher level 58 thousand (0.9%), Primary level 40 thousand (0.4%) and Illiterate and Less than primary level 20 thousand (0.2%). Comparing to the same period of 2011, it was showed that the number of unemployed persons in Higher level decreased by 77 thousand and Illiterate and Less than primary level 12 thousand. While Lower secondary level increased by 19 thousand, Upper secondary level 17 thousand and Primary level 5 thousand.

Figure 6 Comparing the number and the unemployment rate by region of September in 2011 and 2012



Concerning the unemployment rates by region, it was found that the Central, the North and the South was the highest at 0.7%, followed by Bangkok (0.6%) and the Northeast (0.5%). Comparing to the same period of 2011, the unemployment rates of whole kingdom decreased, In the South decreased the highest, followed by Bangkok and the Northeast. For the Central and the North unchanged.

Key labor force indicators

																					Number (Thousand persons)					
Month/Year	Persons in labor force	Seasonally inactive	Unemployed	Uuder-	Uuder-	Unemploy-	Labor force	Persons in labor force	Seasonally inactive	Unemployed	Uuder-	Uuder-	Unemploy-	Labor force	Persons in labor force	Seasonally inactive	Unemployed	Uuder-	Uuder-	Unemploy-	Labor force					
				employment	employment						ment Rates	participation						employment	employment			ment Rates	participation	employment	employment	ment Rates
				worker	worker	Rates	Rates					worker	worker	Rates	Rates											
				Total								Male														
																Female										
Sep. 2009	38,361.3	107.6	458.1	628.4	1.7	1.2	72.4	21,059.7	31.4	244.0	398.7	1.9	1.3	81.8	17,301.6	76.2	214.1	229.8	1.3	1.0	63.6					
Sep.2010	39,455.3	31.2	343.3	377.5	1.0	0.9	73.6	21,313.3	17.6	174.9	248.7	1.2	0.8	81.8	18,142.0	13.7	168.4	128.8	0.7	0.9	65.9					
2011																										
Jul.	39,769.3	15.8	205.9	215.1	0.5	0.5	73.6	21,305.7	2.7	115.6	134.8	0.6	0.5	81.1	18,463.6	13.1	90.3	80.3	0.4	0.5	66.5					
Aug.	39,761.3	53.2	270.4	223.6	0.6	0.7	73.5	21,231.3	15.7	139.0	130.6	0.6	0.7	80.8	18,530.0	37.6	131.4	93.0	0.5	0.7	66.7					
Sep.	39,233.2	73.2	295.3	290.5	0.7	0.8	72.5	21,266.0	41.1	160.9	178.9	0.8	0.8	80.9	17,967.2	32.2	134.3	111.5	0.6	0.7	64.6					
Oct.	38,816.9	299.2	219.2	366.3	1.0	0.6	71.7	20,989.3	158.3	125.0	229.3	1.1	0.6	79.8	17,827.6	140.9	94.3	136.9	0.8	0.5	64.0					
Nov.	39,452.7	152.1	322.0	250.8	0.6	0.8	72.8	21,199.7	64.6	186.4	149.4	0.7	0.9	80.5	18,253.0	87.5	135.6	101.4	0.6	0.7	65.5					
Dec.	39,784.9	119.6	171.7	194.0	0.5	0.4	73.4	21,415.1	61.8	91.8	111.6	0.5	0.4	81.3	18,369.8	57.8	79.8	82.4	0.5	0.4	65.9					
2012																										
Jan.	38,619.2	377.8	314.5	258.2	0.7	0.8	71.1	21,123.8	182.6	197.9	139.8	0.7	0.9	80.1	17,495.4	195.2	116.6	118.4	0.7	0.7	62.7					
Feb.	38,798.1	484.2	256.3	266.8	0.7	0.7	71.4	21,128.1	246.9	159.1	142.7	0.7	0.8	80.1	17,670.1	237.2	97.2	124.1	0.7	0.6	63.3					
Mar.	38,955.1	475.4	284.7	248.2	0.6	0.7	71.7	21,288.8	247.3	169.6	152.6	0.7	0.8	80.6	17,666.3	228.1	115.1	95.7	0.6	0.7	63.2					
Apr.	38,909.3	389.0	376.5	257.5	0.7	1.0	71.5	21,302.6	163.0	203.0	138.7	0.7	1.0	80.6	17,606.7	226.0	173.6	118.9	0.7	1.0	62.9					
May.	39,007.0	379.5	359.0	323.6	0.8	0.9	71.6	21,233.8	176.4	199.6	199.4	1.0	0.9	80.3	17,773.2	203.1	159.5	124.2	0.7	0.9	63.5					
Jun.	39,883.2	87.1	266.9	281.4	0.7	0.7	73.2	21,535.2	32.9	156.5	162.2	0.8	0.7	81.3	18,348.0	54.2	110.3	119.2	0.7	0.6	65.5					
Jul.	40,097.6	17.8	226.0	247.5	0.6	0.6	73.5	21,571.9	6.6	127.1	142.3	0.7	0.6	81.4	18,525.7	11.2	98.8	105.3	0.6	0.5	66.1					
Aug.	39,800.8	33.5	224.2	275.7	0.7	0.6	72.9	21,474.7	12.8	122.5	146.4	0.7	0.6	81.0	18,326.1	20.6	101.8	129.2	0.7	0.6	65.3					
Sep.	39,438.8	39.2	247.0	356.5	0.9	0.6	72.2	21,384.9	27.0	150.7	207.3	1.0	0.7	80.6	18,053.9	12.3	96.3	149.1	0.8	0.5	64.3					

Source : The labor force survey of September in 2012

Remark : Underemployment worker means a worker who working less than 35 hours per week and available for additional work

: Underemployment worker rate means (The total underemployment worker / The total employed persons)x100