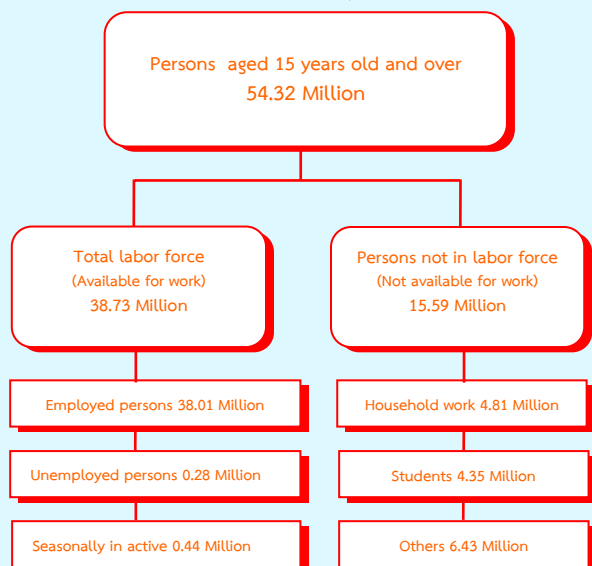


# EXECUTIVE SUMMARY

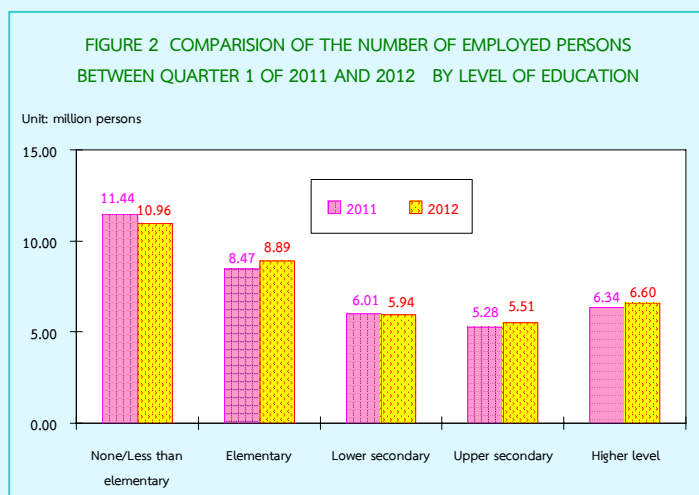
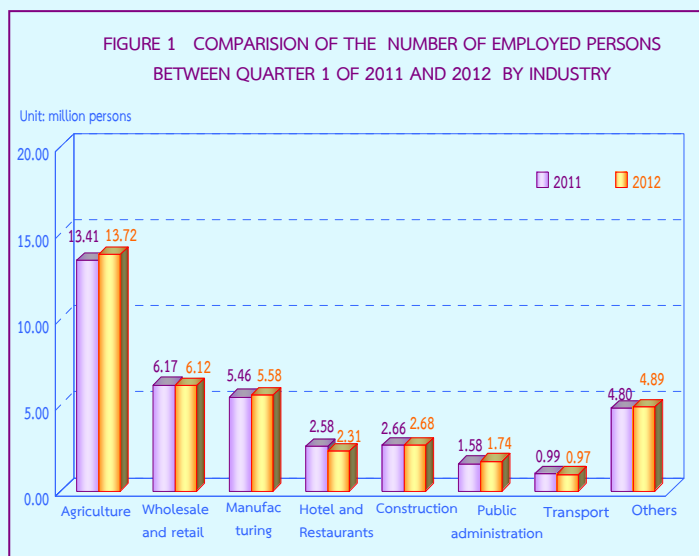
## LABOR FORCE SURVEY IN THE 1<sup>st</sup> QUARTER OF 2012

### NUMBER OF POPULATION BY LABOR FORCE THE LABOR FORCE SURVEY , QUARTER 1 : 2012



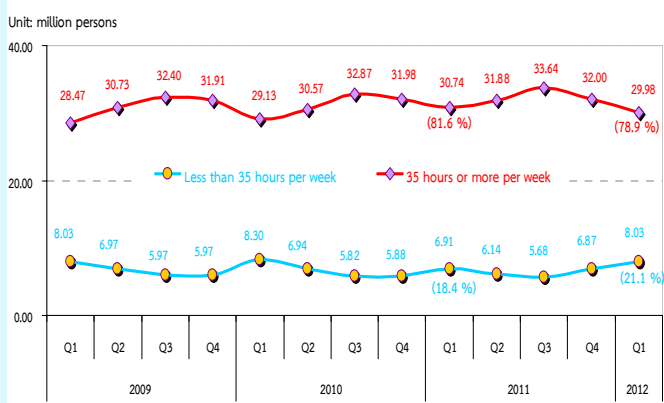
Some major findings from the 1<sup>st</sup> Quarter of the 2012 Labor Force Survey showed that there were 54.32 million people, aged 15 years and over, of these, 38.73 million were in the labor force (38.01 million were employed, 0.28 million were unemployed and 0.44 million were seasonally inactive labor force) and 15.59 million persons were not in the labor force.

Comparing to the same period of 2011, the number of persons employed increased by 0.36 million persons. (from 37.65 million to 38.01 million) or about 1.0%. It was found that the number of employed persons in agriculture sector increased by 0.31 million (from 13.41 million to 13.72 million). Those in non – agriculture sector increased by 50 thousand persons. (from 24.24 million to 24.29 million). This increment was found in various industries, such as Public administration about 0.16 million, Manufacturing about 0.12 million and Construction about 20 thousand persons.



Comparing level of educational attainment of the employed persons to the same period of 2011, it was found that the number of employed persons with elementary level increased by 0.42 million persons, followed by higher level increased by 0.26 million. Upper secondary level rose by 0.23 million persons. However, employed persons with no education and with less than elementary and lower secondary level decreased by 0.48 million and 70 thousand persons respectively.

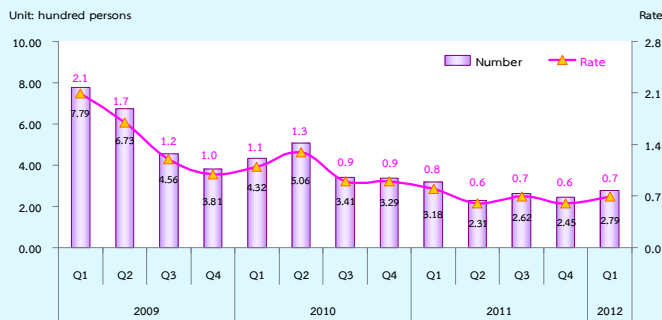
**FIGURE 3 THE NUMBER OF EMPLOYED PERSONS OF 2009 TO 2012 BY HOURS WORKED**



Regarding working hours per day, results of the 1<sup>st</sup> Quarter showed that about 29.98 million persons or 78.9% of the total employed persons worked more than 35 hours per week. On the other word, about 8.03 million persons or 21.1% of the total employed persons worked less than 35 hours per week.

Comparing to the same period of 2011, statistics showed that full time worker (working more than 35 hours per week) decreased around 0.76 million persons but those were part time (working less than 35 hours per week) increased, of about 1.12 million persons.

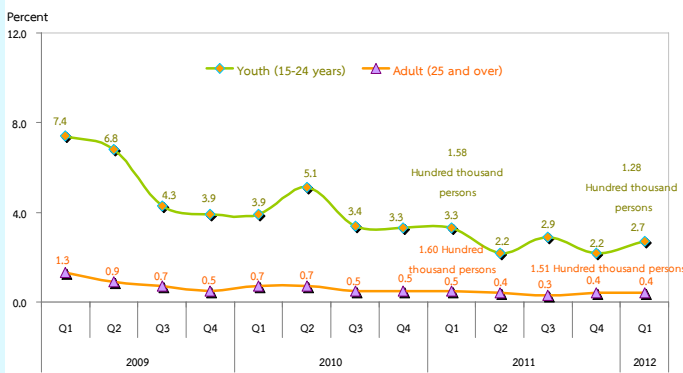
**FIGURE 4 THE NUMBER OF UNEMPLOYED PERSONS AND UNEMPLOYMENT RATE OF 2009 TO 2012**



Remark : 
$$\text{Unemployment rate} = \frac{\text{Unemployed persons}}{\text{Total labor force}} \times 100$$

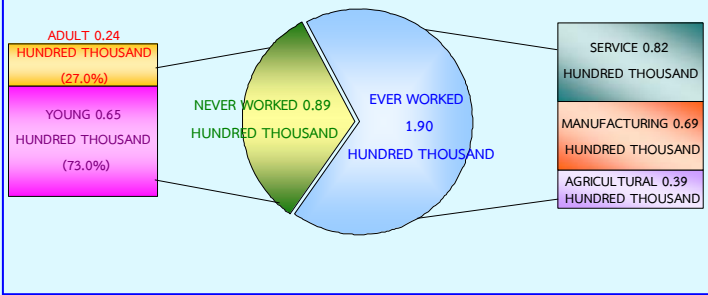
From the 1<sup>st</sup> quarter of 2012, there were 0.28 million or 0.7% of unemployed persons. Comparing to the same period of last year, the number of unemployed persons decreased by 40 thousand persons (from 0.32 million to 0.28 million). Considering by age group, it is noticeable that there were 0.13 million or 2.7% found in a teenager group (15-24 years old) and 0.15 million or 0.4% in adult group (25 years and over). Comparing to the same period of 2011 the number of unemployed persons decreased by 30 thousand persons (from 0.16 million to 0.13 million), in the teenagers'. The adult group decreased by 10 thousand persons (from 0.16 million to 0.15 million).

**FIGURE 5 UNEMPLOYMENT RATE OF 2009 TO 2012 BY AGE GROUP**



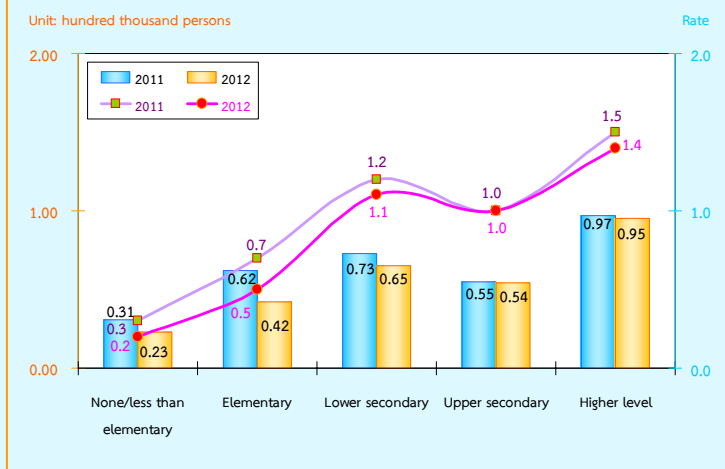
Remark : 
$$\text{Unemployment rates by age group} = \frac{\text{Unemployed persons by age group}}{\text{Total labor force by age group}} \times 100$$

FIGURE 6 NUMBER OF UNEMPLOYED PERSONS BY EXPERIENCE OF WORK QUARTER 1 : 2012



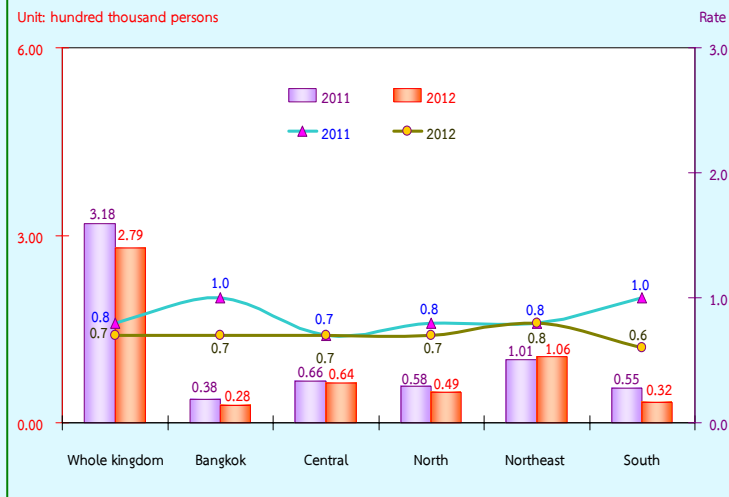
Concerning work experience of unemployed persons, about 89 thousand persons out of 0.28 million, had no experience in work, with these 65 thousand persons were from the teenager group, and 24 thousand persons from the adult group, about 0.19 million of unemployed persons have ever worked. Looking at the distribution of unemployed persons, about 82 thousand were from the service sector, 69 thousand persons, were from manufacturing and the least, of about 39 thousand were from agriculture sector.

FIGURE 7 COMPARISON NUMBER AND UNEMPLOYMENT RATES BY LEVEL OF EDUCATION, BETWEEN QUARTER 1 OF 2011 AND 2012



Data of the 1<sup>st</sup> Quarter showed that the higher level of education attainment, the higher number of unemployed, it is clearly seen that 95 thousand persons with the highest level of educational attainment were unemployed, followed by 65 thousand persons, with lower secondary and 54 thousand persons, with upper secondary level. Unemployed persons with elementary level were about 42 thousand persons and around 23 thousand persons with no education and with less than elementary.

FIGURE 8 COMPARISON OF THE NUMBER AND UNEMPLOYMENT RATES BY REGION, BETWEEN QUARTER 1 OF 2011 AND 2012



Comparing the number of unemployment by region with the same period of last year, it showed that the number of unemployed persons of most regions decreased, in the South decreased by 23 thousand persons, Bangkok by 10 thousand persons, the North by 9 thousand persons and the smallest number was in the Central by 2 thousand persons. It is notable that only in the Northeast the number of unemployed increased by 5 thousand persons.

In sum, the results of the 1<sup>st</sup> Quarter of the 2012 Labor Force Survey revealed that the over all unemployment rates decreased by 0.1 (from 0.8% to 0.7%). A decrease appeared in most of the regions; the South by 0.4 (from 1.0% to 0.6%), Bangkok by 0.3 (from 1.0% to 0.7%) and the North by 0.1 (from 0.8% to 0.7%), while the unemployment rate did not change in the Central and the Northeast.