

Summary of the labor force survey in Thailand : March 2014

Table 1 Comparison of population aged 15 years and over by labor force status

Labor force status	2013			2014	
	Feb	Mar	Apr	Feb	Mar
	Unit : million				
Persons over 15 years	54.22	54.26	54.31	54.69	54.72
1. Total labor force	38.67	38.71	38.24	38.31	38.61
1.1 employed	38.19	38.15	37.55	37.74	37.90
1.2 unemployed	0.24	0.28	0.33	0.33	0.34
1.3 seasonally	0.24	0.28	0.36	0.24	0.37
2. Not in labor force	15.55	15.55	16.07	16.38	16.11

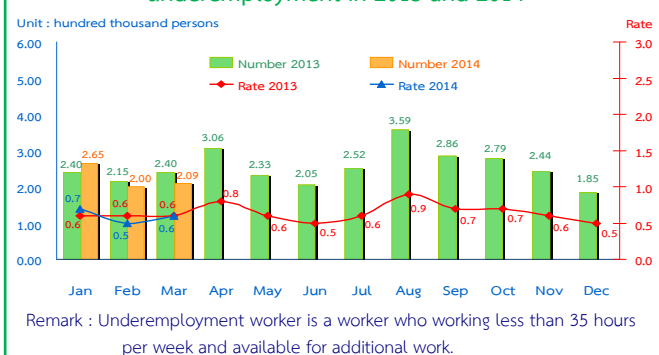
The results of Labor Force Survey in March 2014 showed that there are population, aged 15 years and over, of about 54.72 million persons. Of these 38.61 million were in the labor force or available for work (37.90 million were employed, 0.34 million were unemployed and 0.37 million were seasonally inactive labor force), while 16.11 million were not in the labor force or not available for work, such as housewives, students or elderly.

Table 2 Comparison of number of employed persons by industry

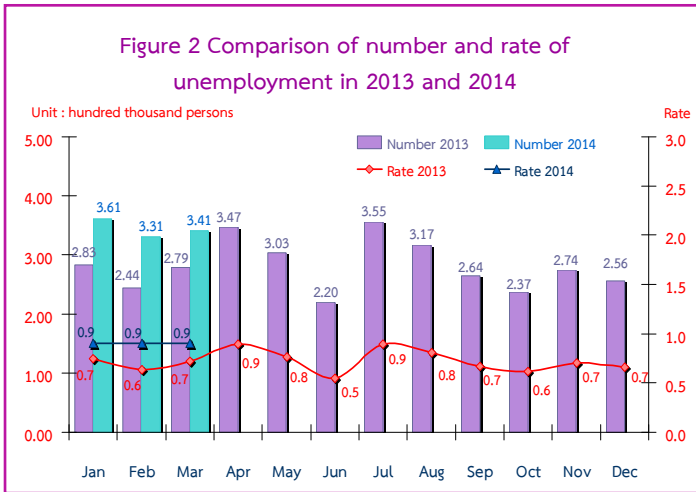
Industry	2013			2014	
	Feb	Mar	Apr	Feb	Mar
	Unit : Million				
Total	38.19	38.15	37.55	37.74	37.90
1. Agricultural	11.99	11.83	11.13	11.84	12.11
- Agriculture, forestry and fishing	11.99	11.83	11.13	11.84	12.11
2. Non-Agricultural	26.20	26.32	26.42	25.90	25.79
- Manufacturing	6.60	6.73	6.36	6.60	6.59
- Construction	2.55	2.75	2.83	2.41	2.65
- Wholesale and retail trade; repair of motor vehicles and motorcycles	6.37	6.40	6.68	6.24	6.15
- Transportation and storage	1.22	1.16	1.10	1.18	1.24
- Accommodation and food service activities	2.73	2.51	2.61	2.66	2.54
- Financial and insurance activities	0.48	0.49	0.56	0.58	0.46
- Real estate activities	0.16	0.17	0.16	0.19	0.19
- Public administration defence and compulsory social security	1.70	1.61	1.64	1.56	1.55
- Education	1.24	1.19	1.21	1.17	1.12
- Human health and social work activities	0.66	0.54	0.66	0.74	0.66
- Other service activities	0.69	0.72	0.69	0.74	0.71
- Others	1.80	2.05	1.92	1.83	1.93

There were 37.90 million employed persons, which 12.11 and 25.79 million were in agriculture and non-agriculture sectors, respectively. Comparing with March in 2013, it was shown that the number of employed persons in agriculture sector increased by 0.28 million, but non-agriculture sector decreased by 0.53 million. This decrement was found in various industries e.g. 0.25 million in wholesale and retail trade, repair of motor vehicles and motorcycles, 0.14 million in manufacturing, 0.10 million in construction, 70 thousand in education, 60 thousand in public administration defence and compulsory social security, 0.30 million in financial and insurance activities, 10 thousand in other service activities. However, an increase in some other industries was found e.g., 0.12 million in human health and social work activities, 80 thousand in transportation and storage, 30 thousand in accommodation and food service activities and 20 thousand in real estate activities and the rest shared in the other industries.

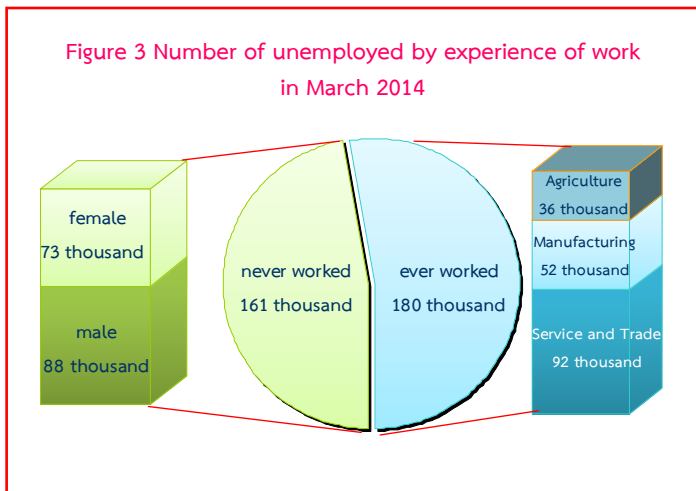
Figure 1 Comparison of number and rate of underemployment in 2013 and 2014



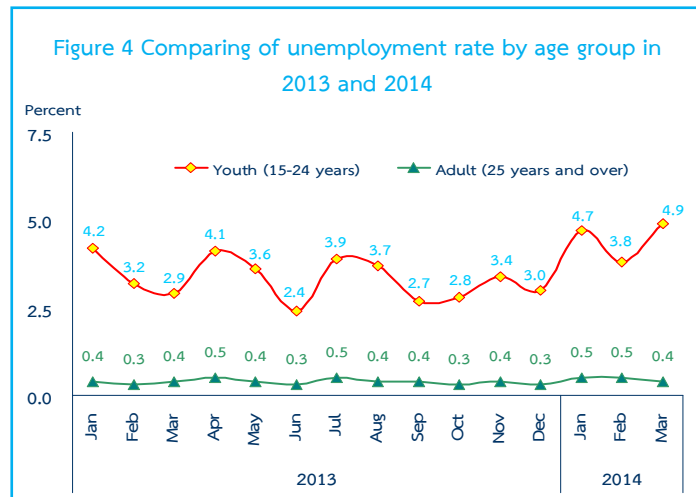
Considering the number of underemployed workers and available for additional work, there were 0.21 million or 0.6% of the total employed persons.



In March 2014, the total number of unemployed persons were 0.34 million or 0.9% of the total labor force and increased of 62 thousand (from 0.28 million to 0.34 million) comparing to the same period as in 2013. And, it showed an increase of 10 thousand (from 0.33 million to 0.34 million) in February 2013.

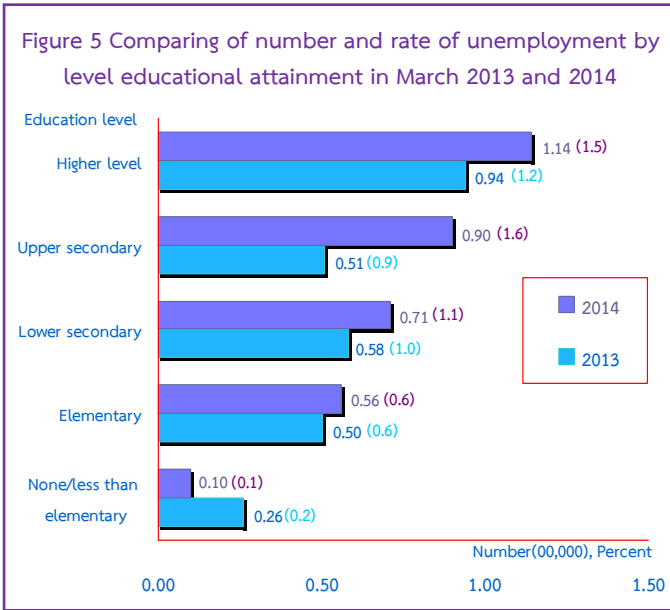


Out of 0.34 million, there were 0.16 million having never worked (88 thousand were male and 73 thousand were female) and 0.18 million had ever, among these, the number of unemployed persons who ever worked increased by 28 thousand (from 0.15 million to 0.18 million), comparing to the same period as in 2013. It was found that 0.18 million distributed in 3 sectors i.e. 92 thousand in services and trade, 52 thousand in manufacturing and 36 thousand in agriculture.



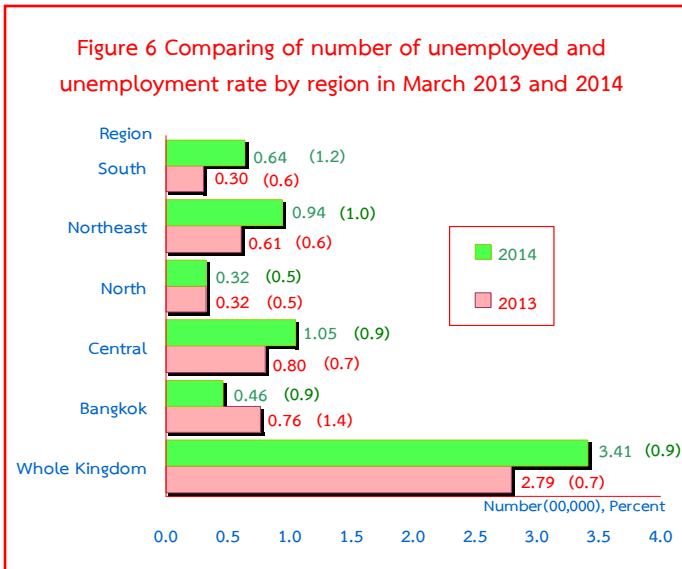
Regarding the unemployment rates by age groups, there were 4.9% in a youth group (aged 15-24 years) and 0.4% in adults group (age 25 years and over).

The unemployment rate in the youth group increased from 2.9% to 4.9% comparing to the same period as in 2013, and increased from 3.8% to 4.9% comparing to February in 2014.



For level of educational attainment of unemployed persons in March 2014, it was found that most of them had higher level (0.11 million or 1.5%), followed by those with upper secondary level (90 thousand or 1.6%), lower secondary level (71 thousand or 1.1%), primary level (56 thousand or 0.6%) and illiterate and less than primary level (10 thousand or 0.1%).

Comparing to the same period in 2013, the result showed that the number of unemployed persons with upper secondary level increased of 39 thousand, higher level of 20 thousand, lower secondary level of 13 thousand, and primary level of 6 thousand. However, those with illiterate less than primary level decreased of 16 thousand.



Concerning the unemployment rate by region, it was found that those in the South was the highest with 1.2%, the Northeast (1.0%), Bangkok and the Central (0.9%) and the North (0.5%).

Comparing to the same period as in 2013, the unemployment rate of the whole kingdom increased. However, concerning by region, it changes in some regions such as, an increase in the South, the Northeast and the Central, but a decrease in Bangkok. While the employed rate did not change in the North.