

Summary of the labor force survey in Thailand : June 2013

Table 1 Comparison of population aged 15 years and over by labor force status

Labor force status	2012			2013	
	May	Jun	Jul	May	Jun
Persons over 15 years	54.45	54.50	54.54	54.96	55.01
1. Total labor force	39.01	39.89	40.10	39.49	40.19
1.1 employed	38.27	39.53	39.85	38.85	39.90
1.2 unemployed	0.36	0.27	0.23	0.30	0.21
1.3 seasonally	0.38	0.09	0.02	0.34	0.08
2. Not in labor force	15.44	14.61	14.44	15.47	14.82

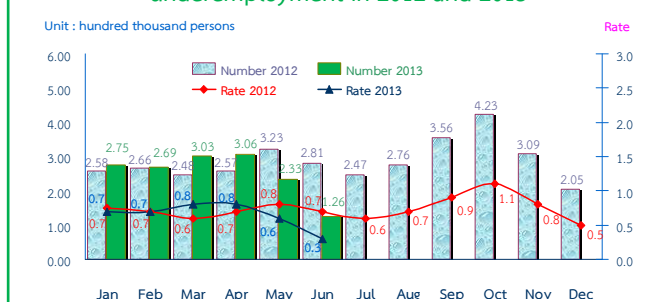
The results of Labor Force Survey in June 2013 showed that there are population, aged 15 years and over, of about 55.01 million persons. Of these 40.19 million were in the labor force or available for work (39.90 million were employed, 0.21 million were unemployed and 0.08 million were seasonally inactive labor force), while 14.82 million were not in the labor force or not available for work, such as housewives, students or elderly.

Table 2 Comparison of number of employed persons by industry

Industry	2012			2013	
	May	Jun	Jul	May	Jun
Total	38.27	39.53	39.85	38.85	39.90
1. Agricultural	14.39	16.35	16.87	14.88	16.59
- Agriculture, forestry and fishing	14.39	16.35	16.87	14.88	16.59
2. Non-Agricultural	23.88	23.18	22.98	23.97	23.31
- Manufacturing	5.73	5.51	5.35	5.75	5.65
- Construction	2.53	2.36	2.15	2.73	2.32
- Wholesale and retail trade; repair of motor vehicles and motorcycles	5.95	5.83	5.80	5.93	5.74
- Transportation and storage	0.92	0.91	0.92	0.89	0.99
- Accommodation and food service activities	2.29	2.15	2.44	2.45	2.39
- Financial and insurance activities	0.44	0.36	0.42	0.44	0.46
- Real estate activities	0.12	0.17	0.17	0.12	0.13
- Public administration defence and compulsory social security	1.79	1.77	1.61	1.63	1.60
- Education	1.14	1.08	1.16	1.06	1.12
- Human health and social work activities	0.69	0.67	0.67	0.69	0.63
- Other service activities	0.71	0.72	0.63	0.59	0.66
- Others	1.57	1.65	1.66	1.69	1.62

There were 39.90 million employed persons, which 16.59 and 23.31 million were in agriculture and non-agriculture sectors, respectively. Comparing with June in 2012, it was shown that the number of employed persons in agriculture sector increased by 0.24 million and non-agriculture sector increased by 0.13 million. This increment was found in various industries e.g. 0.24 million in accommodation and food service activities, 0.14 million in manufacturing, 0.10 million in financial and insurance activities, 80 thousand in transportation and storage. However, a decrease in some other industries was found e.g., 0.17 million in public administration and defense, 90 thousand in wholesale and retail trade, repair of motor vehicles and motorcycles, 60 thousand in other service activities (Health service activities, pets care service and laundry & dry cleaning service), 50 thousand in real estate activities, 40 thousand in construction and human health and social work activities and the rest shared in the other industries.

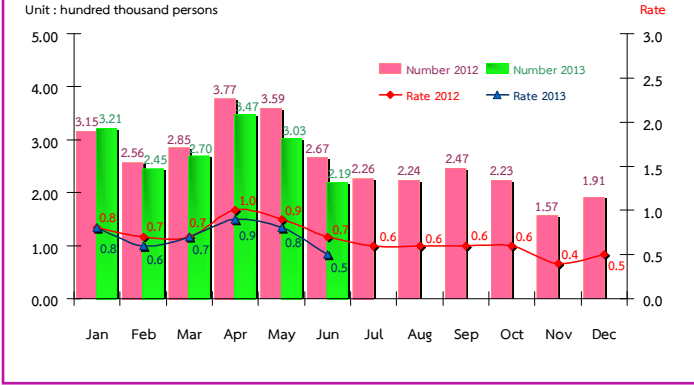
Figure 1 Comparison of number and rate of underemployment in 2012 and 2013



Considering the number of underemployed workers and available for additional work, there were 0.13 million or 0.3% of the total employed persons.

Remark : Underemployment worker is a worker who working less than 35 hours per week and available for additional work.

Figure 2 Comparison of number and rate of unemployment in 2012 and 2013



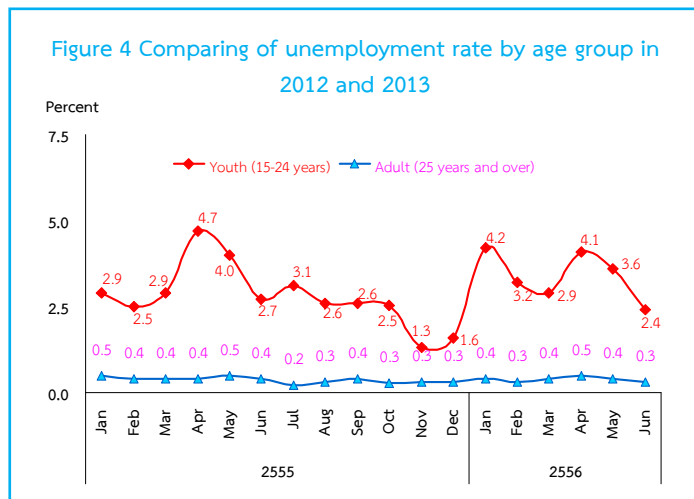
In June 2013, the total number of unemployed persons were 0.22 million or 0.5% of the total labor force and decreased of 48 thousand (from 0.27 million to 0.22 million) comparing to the same period as in 2012. And, it showed a decrease of 84 thousand (from 0.30 million to 0.22 million) in May 2013.

Figure 3 Number of unemployed by experience of work in June 2013



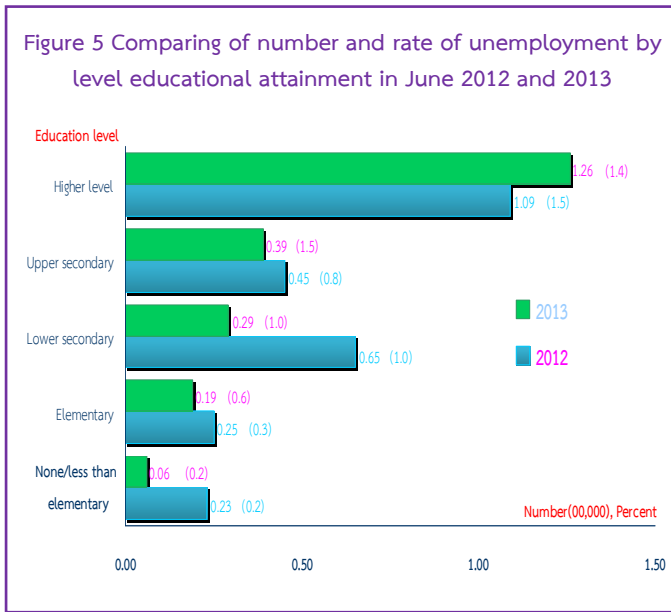
Out of 0.22 million, there were 0.12 million having never worked (56 thousand were male and 65 thousand were female) and 98 thousand had ever, among these, the number of unemployed persons who ever worked decreased by 48 thousand (from 0.15 million to 98 thousand), comparing to the same period as in 2012. It was found that 98 thousand distributed in 3 sectors i.e. 45 thousand in manufacturing, 41 thousand in trade and services and 12 thousand in agriculture.

Figure 4 Comparing of unemployment rate by age group in 2012 and 2013



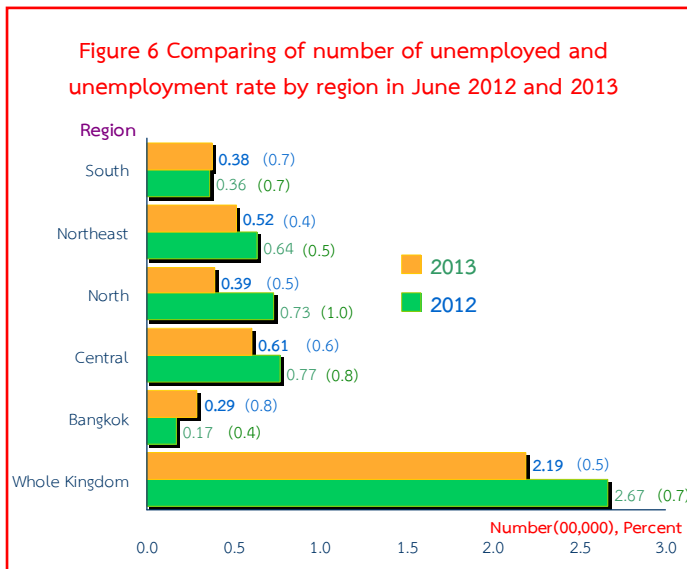
Regarding the unemployment rates by age groups, there were 2.4% in a youth group (aged 15-24 years) and 0.3% in adults group (age 25 years and over).

The unemployment rate in the youth group decreased from 2.7% to 2.4% comparing to the same period as in 2012, and decreased from 3.6% to 2.4% comparing to May in 2013.



For level of educational attainment of unemployed persons in June 2013, it was found that most of them had higher level (0.13 million or 1.4%), followed by those with upper secondary level (39 thousand or 1.5%), lower secondary level (29 thousand or 1.0%), primary level (19 thousand or 0.6%), and illiterate and less than primary level (6 thousand or 0.2%).

Comparing to the same period in 2012, the result showed that the number of unemployed persons with lower secondary level of 36 thousand, illiterate and less than primary level of 17 thousand and upper secondary and primary level decreased of 6 thousand. However, those with higher level increased of 17 thousand.



Concerning the unemployment rate by region, it was found that those in Bangkok was the highest with 0.8%, followed by those in the South (0.7%), the Central (0.6%), the North (0.5%) and the Northeast (0.4%).

Comparing to the same period as in 2012, the unemployment rate of the whole kingdom decreased. However, concerning by region, it changes in some regions such as, a decrease in the North, the Central and the Northeast, an increase in Bangkok.