

## Summary of the labor force survey in Thailand : November 2012

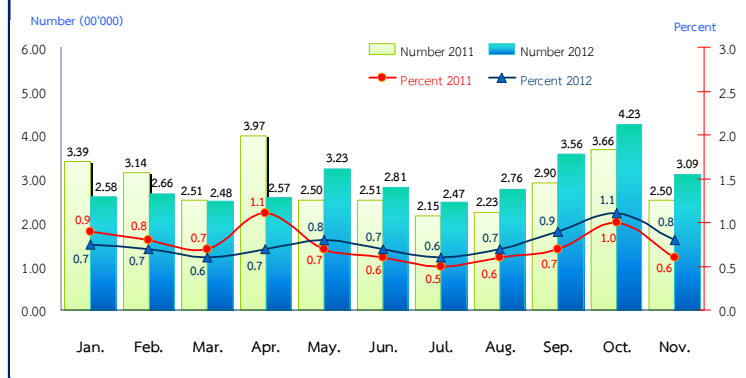
Table 1 Comparison of the population aged 15 years and over by labor force status					
Unit : million					
Labor force status	2011			2012	
	Oct.	Nov.	Dec.	Oct.	Nov.
Persons over 15 years	54.15	54.19	54.24	54.66	54.70
1. Total labor force	38.82	39.45	39.78	39.49	40.17
1.1 employed	38.30	38.98	39.49	39.21	39.97
1.2 unemployed	0.22	0.32	0.17	0.22	0.16
1.3 seasonally	0.30	0.15	0.12	0.06	0.04
2. Not in labor force	15.33	14.74	14.46	15.17	14.53

The results of Labor Force Survey of November in 2012, it was found that for population aged 15 years and over of 54.70 million persons. 40.17 million were in the labor force or available for work (39.97 million were employed, 0.16 million were unemployed and 40 thousand were seasonally inactive labor force). While 14.53 million were not in the labor force or not available for work such as housewives, students or seniors.

Table 2 Comparison of the number of employed persons by industry					
Unit : million					
industry	2011			2012	
	Oct.	Nov.	Dec.	Oct.	Nov.
<b>Total</b>	<b>38.30</b>	<b>38.98</b>	<b>39.49</b>	<b>39.21</b>	<b>39.97</b>
<b>1. Agricultural</b>	<b>14.28</b>	<b>15.53</b>	<b>16.80</b>	<b>14.87</b>	<b>16.83</b>
- Agriculture, forestry and fishing	14.28	15.53	16.80	14.87	16.83
<b>2. Non-Agricultural</b>	<b>24.02</b>	<b>23.45</b>	<b>22.69</b>	<b>24.34</b>	<b>23.14</b>
- Manufacturing	5.62	5.15	5.21	5.72	5.41
- Construction	2.31	2.05	1.82	2.56	2.20
- Wholesale and retail trade; repair of motor vehicles and motorcycles	6.07	6.26	5.93	6.13	6.12
- Transportation and storage	1.10	0.96	0.90	0.92	0.97
- Accommodation and food service activities	2.41	2.23	2.66	2.51	2.38
- Financial and insurance activities	0.43	0.44	0.38	0.46	0.38
- Real estate activities	0.08	0.09	0.10	0.14	0.11
- Public administration defence and compulsory social security	1.67	1.80	1.54	1.71	1.56
- Education	1.22	1.37	1.33	1.15	1.31
- Human health and social work activities	0.66	0.65	0.63	0.66	0.63
- Other service activities	0.78	0.75	0.68	0.67	0.54
- Others	1.67	1.70	1.51	1.71	1.53

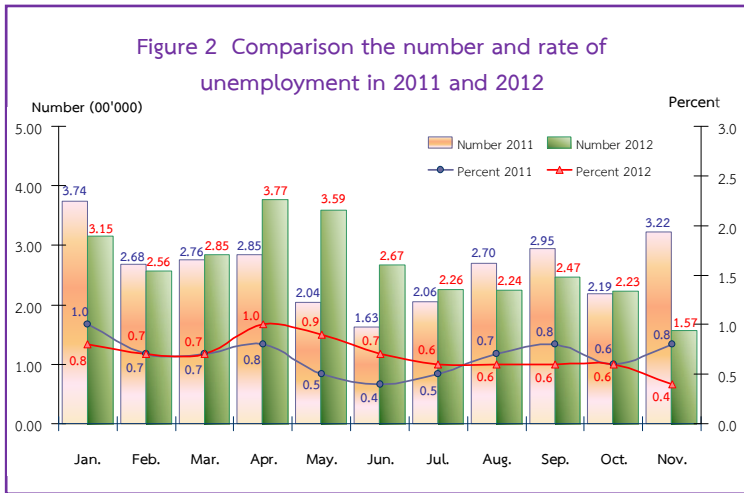
The number of employed persons 39.97 million were in agriculture sector 16.83 million and non-agriculture sector 23.14 million. Comparing with November in 2011, it was showed that the number of employed persons in agriculture sector increased by 1.3 million but non-agriculture sector decreased by 0.31 million. This decrement was found in various industries, Public administration and defence decreased by 0.24 million, followed by Other service activities (Health service activities, Pets care service and Laundry & Dry cleaning service) 0.21 million, Wholesale and Retail trade and Repair of motor vehicles and motorcycles 0.14 million, Financial and insurance activities and Education 60 thousand. While various industries were increased, Manufacture 0.26 million, followed by Construction and Accommodation and food service activities 0.15 million. The rest shared in the other industries.

Figure 1 Comparison of the number and rate of underemployment in 2011 and 2012

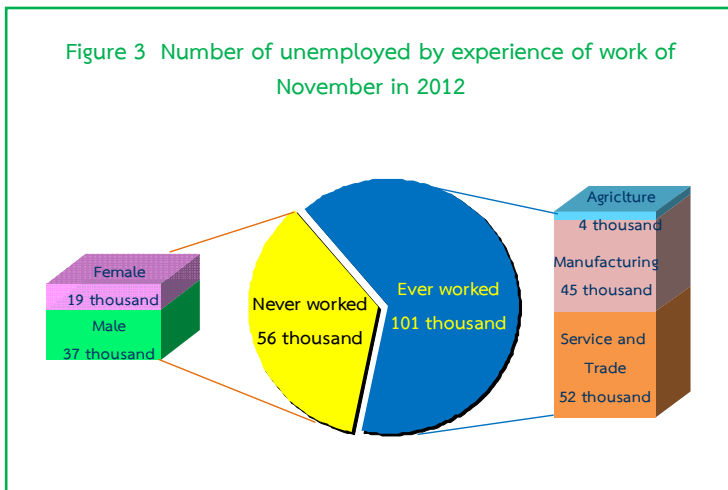


Considering the number of the employed persons who don't effectively work and available for additional work, that called this group is the underemployment worker (0.31 million or about 0.8% of the total employed persons). Although this group is employed persons but they have enough free time and available for additional work for more earning.

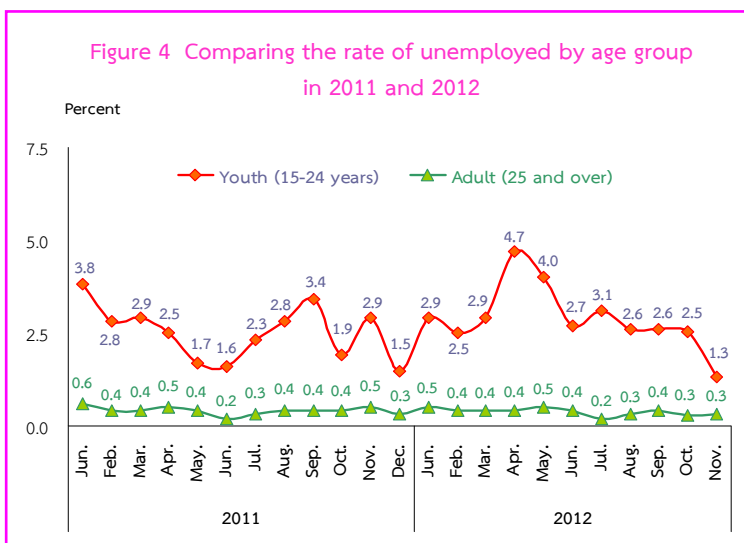
Remark : Underemployment worker is a worker who working less than 35 hours per week and available for additional work.



In November 2012, there were the total number of unemployed persons 0.16 million or 0.4%. Comparing to the same period of 2011, the number of unemployed persons decreased by 0.16 million (from 0.32 million to 0.16 million). And comparison with October in 2012, the number of unemployed persons decreased by 60 thousand (from 0.22 million to 0.16 million).

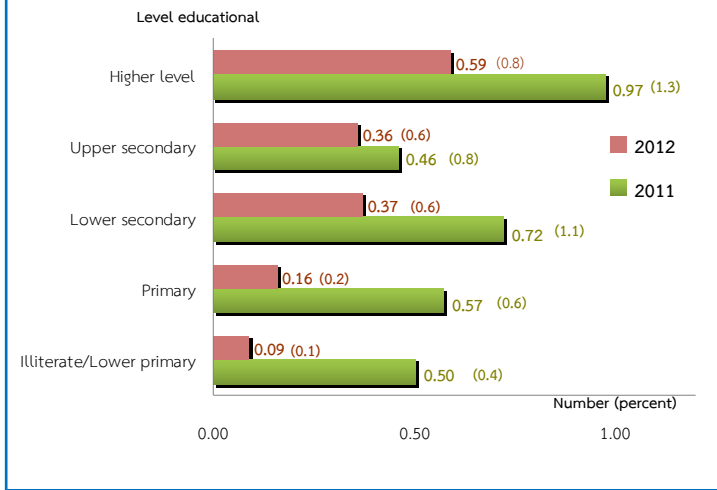


Regarding the unemployed persons by experience of work, it was found that 56 thousand had never worked and 0.1 million had ever worked. Comparing to the same period of 2011, the number of unemployed persons who ever worked decreased by 0.13 million (from 0.23 million to 0.1 million). There were 52 thousand from Trade and Services sector, 45 thousand from Manufacturing sector and 4 thousand from Agriculture sector.



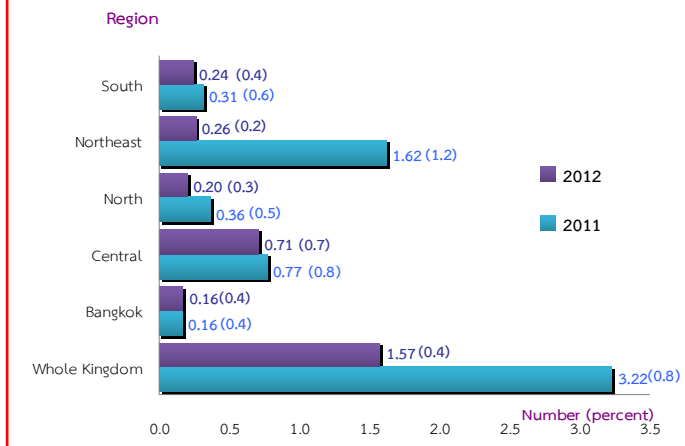
The unemployment rates by age groups, there were 1.3% in a youth group (aged 15-24 years) which unemployment rate was high in this group and 0.3% in adults group (age 25 years and over). Comparing to the same period of 2011, the youth group decreased from 2.9% to 1.3% and comparing with October in 2012, the youth group decreased from 2.5% to 1.3%.

Figure 5 Comparing the number and rate of unemployment by level educational attainment of November in 2011 and 2012



Education level attainment of the unemployed persons of November in 2012, it was found that the number of unemployed persons with Higher level was the highest 59 thousand (0.8%), followed by Lower secondary level 37 thousand (0.6%), Upper secondary level 36 thousand (0.6%), Primary level 16 thousand (0.2%) and Illiterate and Less than primary level 9 thousand (0.1%). Comparing to the same period of 2011, it was showed that the number of unemployed persons in Primary level and Illiterate and Less than primary level decreased by 41 thousand, Higher level 38 thousand, Lower secondary level 35 thousand and Upper secondary level 10 thousand.

Figure 6 Comparing the number and the unemployment rate by region of November in 2011 and 2012



Concerning the unemployment rates by region, it was found that the Central was the highest at 0.7%, followed by Bangkok and the South (0.4%), the North (0.3%) and the Northeast (0.2%). Comparing to the same period of 2011, the unemployment rates of whole kingdom decreased, when concerning by region, it was showed that the Northeast decreased the highest, followed by the North, the South and the Central. For Bangkok unchanged.

## Key labor force indicators

Month/Year	Persons in	Seasonally	Unemployed	Uuder-	Uuder-	Unemploy-	Labor force	Persons in	Seasonally	Unemployed	Uuder-	Uuder-	Unemploy-	Labor force	Persons in	Seasonally	Unemployed	Uuder-	Uuder-	Unemploy-	Labor force
	labor force	inactive		employment	employment	ment Rates	participation	labor force	inactive		employment	employment	ment Rates	participation	labor force	inactive		employment	employment	ment Rates	participation
				worker	worker	Rates	Rates				worker	worker	Rates	Rates				worker	worker	Rates	Rates
Number ('000)																					
Total								Male								Female					
Nov. 2009	38,800.9	81.3	391.9	632.6	1.7	1.0	73.1	20,962.5	35.9	231.7	381.6	1.8	1.1	81.3	17,838.4	45.4	160.1	251.0	1.5	0.9	65.4
Nov. 2010	38,709.1	139.6	389.5	291.3	0.8	1.0	72.1	20,923.3	82.7	214.3	176.4	0.9	1.0	80.2	17,785.8	56.9	175.2	114.9	0.7	1.0	64.5
<b>2011</b>																					
Sep.	39,233.2	73.2	295.3	290.5	0.7	0.8	72.5	21,266.0	41.1	160.9	178.9	0.8	0.8	80.9	17,967.2	32.2	134.3	111.5	0.6	0.7	64.6
Oct.	38,816.9	299.2	219.2	366.3	1.0	0.6	71.7	20,989.3	158.3	125.0	229.3	1.1	0.6	79.8	17,827.6	140.9	94.3	136.9	0.8	0.5	64.0
Nov.	39,452.7	152.1	322.0	250.8	0.6	0.8	72.8	21,199.7	64.6	186.4	149.4	0.7	0.9	80.5	18,253.0	87.5	135.6	101.4	0.6	0.7	65.5
Dec.	39,784.9	119.6	171.7	194.0	0.5	0.4	73.4	21,415.1	61.8	91.8	111.6	0.5	0.4	81.3	18,369.8	57.8	79.8	82.4	0.5	0.4	65.9
<b>2012</b>																					
Jan.	38,619.2	377.8	314.5	258.2	0.7	0.8	71.1	21,123.8	182.6	197.9	139.8	0.7	0.9	80.1	17,495.4	195.2	116.6	118.4	0.7	0.7	62.7
Feb.	38,798.1	484.2	256.3	266.8	0.7	0.7	71.4	21,128.1	246.9	159.1	142.7	0.7	0.8	80.1	17,670.1	237.2	97.2	124.1	0.7	0.6	63.3
Mar.	38,955.1	475.4	284.7	248.2	0.6	0.7	71.7	21,288.8	247.3	169.6	152.6	0.7	0.8	80.6	17,666.3	228.1	115.1	95.7	0.6	0.7	63.2
Apr.	38,909.3	389.0	376.5	257.5	0.7	1.0	71.5	21,302.6	163.0	203.0	138.7	0.7	1.0	80.6	17,606.7	226.0	173.6	118.9	0.7	1.0	62.9
May.	39,007.0	379.5	359.0	323.6	0.8	0.9	71.6	21,233.8	176.4	199.6	199.4	1.0	0.9	80.3	17,773.2	203.1	159.5	124.2	0.7	0.9	63.5
Jun.	39,883.2	87.1	266.9	281.4	0.7	0.7	73.2	21,535.2	32.9	156.5	162.2	0.8	0.7	81.3	18,348.0	54.2	110.3	119.2	0.7	0.6	65.5
Jul.	40,097.6	17.8	226.0	247.5	0.6	0.6	73.5	21,571.9	6.6	127.1	142.3	0.7	0.6	81.4	18,525.7	11.2	98.8	105.3	0.6	0.5	66.1
Aug.	39,800.8	33.5	224.2	275.7	0.7	0.6	72.9	21,474.7	12.8	122.5	146.4	0.7	0.6	81.0	18,326.1	20.6	101.8	129.2	0.7	0.6	65.3
Sep.	39,438.8	39.2	247.0	356.5	0.9	0.6	72.2	21,384.9	27.0	150.7	207.3	1.0	0.7	80.6	18,053.9	12.3	96.3	149.1	0.8	0.5	64.3
Oct.	39,489.7	58.3	222.5	422.9	1.1	0.6	72.2	21,372.9	30.5	126.5	286.3	1.3	0.6	80.5	18,116.8	27.7	96.0	136.6	0.8	0.5	64.4
Nov.	40,170.9	40.2	157.6	309.1	0.8	0.4	73.4	21,492.8	16.9	94.3	195.0	0.9	0.4	80.9	18,678.1	23.3	63.3	114.1	0.6	0.4	66.4

Source : The labor force survey of November in 2012

Remark : Underemployment worker means a worker who working less than 35 hours per week and available for additional work

: Underemployment worker rate means (The total underemployment worker / The total employed persons)x100