

Preliminary Report of the 2004 Construction Industry Survey : Northeastern Region

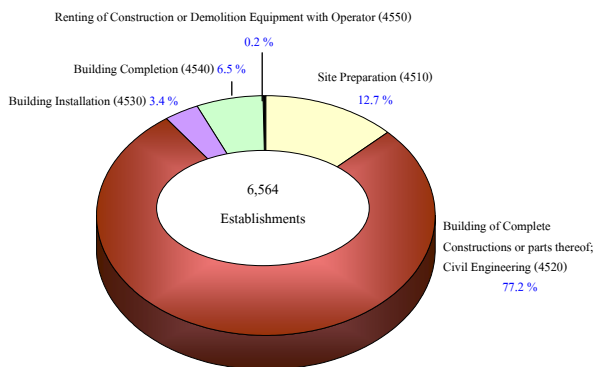
The National Statistical Office (NSO) had conducted the first Survey of Construction Industry in 1999, as the due to requirement from National Economic and Social Development Board (NESDB) and no any agencies have collected such a kind of these data. These data could be used in calculating National Account and Input - Output Tables. Since the basic construction information were used for implementing the construction industry policies and developing planning, the NSO conduct this survey every 5 years.

The data presented are the results of operation of construction establishment with at least one person engaged, located in the **Northeastern Region**. The information collected refers to the year of 2003 (January 1 to December 31). The major findings are as follows;

1. Number of Construction Establishments

There were totally 6,564 establishments. Most of them (about 77.2 percent) were engaged in *building of complete constructions or parts thereof; civil engineering*. Followed by those engaged in *site preparation* about 12.7 percent. The lowest proportion (about 0.2 percent) of establishments engaged in *renting of construction or demolition equipment with operator*.

Figure 1 Percentage of Construction Establishments by Class of Construction Industry



Note : The 2004 Construction Industry Survey, Northeastern Region. National Statistical Office.

2. Size of Establishment (Number of Persons Engaged)

Most of them were small size, about 87.0 percent of establishments with 1 – 10 persons. There was small proportion of large sizes with more than 10 persons, about 13.0 percent.

Table 1 Percentage of Construction Establishments by Size of Establishment (Number of Persons) and Class of Construction Industry

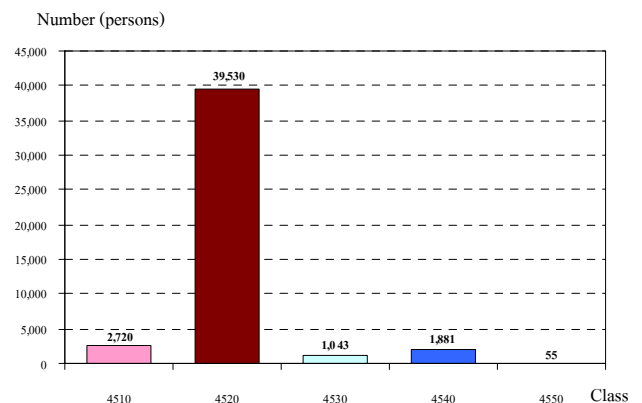
Class of Construction Industry	Total	1 – 5 Persons	6 – 10 Persons	11 – 20 Persons	> 20 Persons
Total	100.0	63.2	23.8	9.6	3.4
4510 Site Preparation	100.0	88.4	9.5	1.8	0.3
4520 Building of Complete Constructions or parts thereof; Civil Engineering	100.0	56.7	27.7	11.4	4.2
4530 Building Installation	100.0	82.2	8.0	7.1	2.7
4540 Building Completion	100.0	80.1	14.7	4.3	0.9
4550 Renting of Construction or Demolition Equipment with Operator	100.0	93.3	-	-	6.7

Note : The 2004 Construction Industry Survey, Northeastern Region. National Statistical Office.

3. Persons Engaged in Construction Establishment

There were totally 45,229 persons worked in construction establishments. Most of them (about 39,530 persons or about 87.4 percent) worked in *building of complete constructions or parts thereof; civil engineering*. Followed by those worked in *site preparation* and *building completion*, which were 2,720 and 1,881 persons or about 6.0 and 4.2 percent respectively. The number persons of those worked in *building installation* and *renting of construction or demolition equipment with operator* were about 1,043 and 55 persons or about 2.3 and 0.1 percent respectively.

Figure 2 Persons Engaged in Construction Establishment by Class of Construction Industry



Note : The 2004 Construction Industry Survey, Northeastern Region. National Statistical Office.

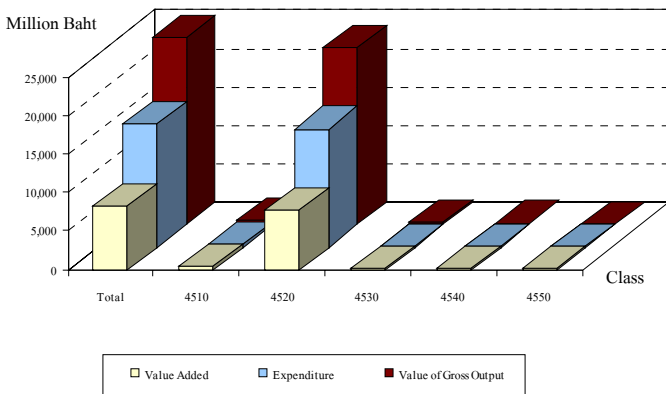
4. Value of Gross Output, Expenditure and Value Added

Value of Gross Output of construction establishments in 2003 had totally 24,239.0 million baht. About 94.7 percent were from the establishments engaged in *building of complete constructions or parts thereof; civil engineering*. The followings were *site preparation* and *building installation* had about 2.7 and 1.1 percent respectively. For the *building completion* and *renting of construction or demolition equipment with operator* were about 1.0 and 0.5 percent respectively.

Expenditure of construction establishments in 2003 had totally 16,055.1 million baht. About 95.7 percent were from the establishments engaged in *building of complete constructions or parts thereof; civil engineering*. Followed by those engaged in *site preparation* and *building installation* were about 2.3 and 0.9 percent respectively. The *building completion* and *renting of construction or demolition equipment with operator* were about 0.7 and 0.4 percent respectively.

Value Added of construction establishments in 2003 had totally 8,183.9 million baht. The establishments engaged in *building of complete constructions or parts thereof; civil engineering* had the highest proportion of about 92.8 percent. The followings were *site preparation* had about 3.6 percent. The *building installation* and *building completion* had the same proportion of about 1.5 percent. The *renting of construction or demolition equipment with operator* had small proportions of about 0.6 percent.

Figure 3 Value of Gross Output, Expenditure and Value Added of establishment by Class of Construction Industry



Note : The 2004 Construction Industry Survey, Northeastern Region. National Statistical Office.

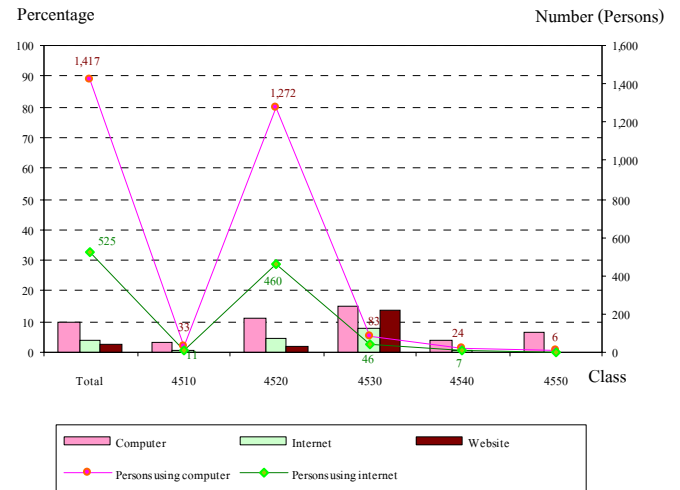
5. Use of Information and Communication Technology

Computer Used, the results of the survey was found that construction establishments in the Northeastern Region had the

proportion of using the computer, of about 10.0 percent. The establishments engaged in *building installation* had about 15.1 percent. Those engaged in *building of complete constructions or parts thereof; civil engineering, renting of constructions or demolition equipment with operator and building completion* had used of computer about 11.4, 6.7 and 4.0 percent respectively. While establishments engaged in *site preparation* had about 3.0 percent.

For the number of persons using computers in their normal work routines (at least once a week), there were 1,417 persons or about 2 persons per establishment.

Figure 4 Percentage of Construction Establishments with Use of Information and Communication Technology, Number of Persons Using Computer and Internet by Class of Construction Industry



Note : The 2004 Construction Industry Survey, Northeastern Region. National Statistical Office.

Internet Used, there was about 4.1 percent. The establishments engaged in *building installation* had about 7.6 percent. Those engaged in *building of complete constructions or parts thereof; civil engineering* and *building completion* were about 4.7 and 0.9 percent respectively. The *site preparation* establishments had the lowest proportion about 0.8 percent of use.

For the number of persons using internet in their normal work routines (at least once a week), there were about 525 persons or about 2 persons per establishment.

Website Used, there was very small proportion of about 3.0 percent. The establishments engaged in *building installation* was about 11.8 and *building of complete constructions or parts thereof; civil engineering* was about 2.1 percent.