

DATA SUMMARY REPORT OF THE 2007 INDUSTRIAL CENSUS : NORTHEASTERN REGION



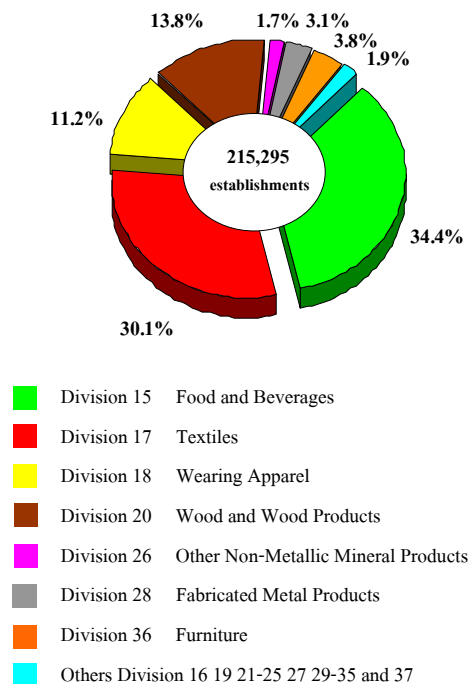
The National Statistical Office (NSO) is undertaking Industrial Census in 2007. This is the third of Thailand, after having conducted the first one in 1964 and the second in 1997. The main objective of the census is to collect basic information on manufacturing establishments, such as number, distribution and performance of establishments during the year. Prior to this report, basic information on the structure and distribution of establishment engaged in all economic activities is collected, was presented in the listing report of 2007 Industrial Census (basic information) whole kingdom.

The statistical data presents the results of the 2007 Industrial Census concerning detailed information during January 1, 2006 to December 31, 2006 of manufacturing establishments, located in the **Northeastern region**. The main findings are as follows;

Number of establishments by division of industry

The results of the 2007 Industrial Census, there were totally 215,295 manufacturing establishments, located in the Northeastern region. The highlight industries of in this region were *manufacture of food products and beverage and manufacture of textiles*. There were about 34.4 and 30.1 percent respectively. The followings were *manufacture of wood and wood products* (13.8 percent) and *manufacture of wearing apparel* (11.2 percent).

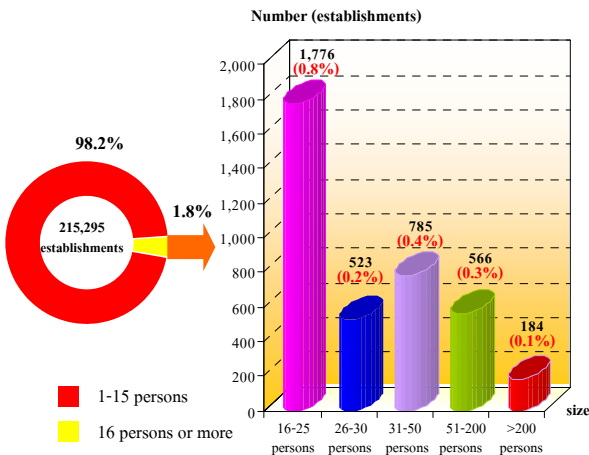
Figure 1 Percentage of manufacturing establishments by division of industry



Size of establishment

Most of manufacturing establishments or about 98.2 percent were small scale establishments with 1 - 15 persons. The establishments with over 15 persons were about 1.8 percent or 3,834 establishments. Out of these, with 51 - 200 persons were 566 establishments and 184 establishments with more than 200 persons.

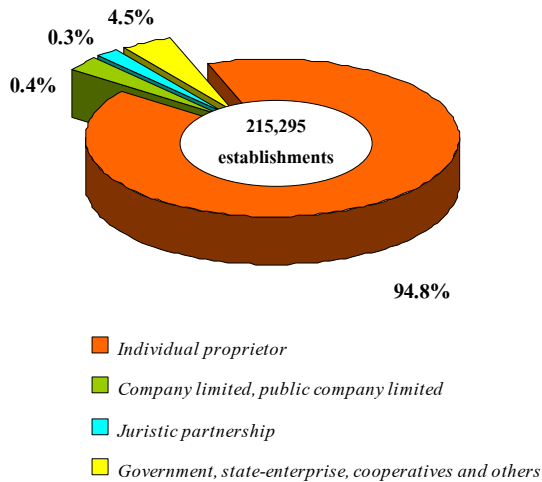
Figure 2 Number of manufacturing establishments by size of establishment (number of persons engaged)



Form of legal organization

Most of manufacturing establishments (about 94.8 percent) were individual proprietor. The establishments, which was in the form of government, state enterprise and others of about 4.5 percent. For those, which were company limited or public company limited and juristic partnership had the close proportions, of about 0.4 and 0.3 percent respectively.

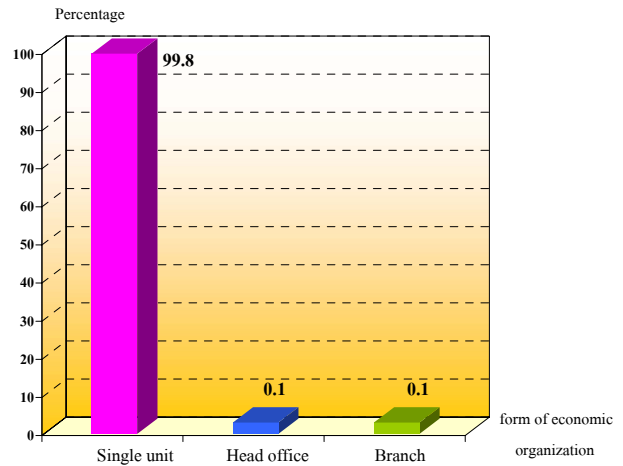
Figure 3 Percentage of manufacturing establishments by form of legal organization



Form of economic organization

The establishments in this industrial census were single unit with the highest proportion, of about 99.8 percent. The rest, were in head office and branch had the same proportions, of about 0.1 percent.

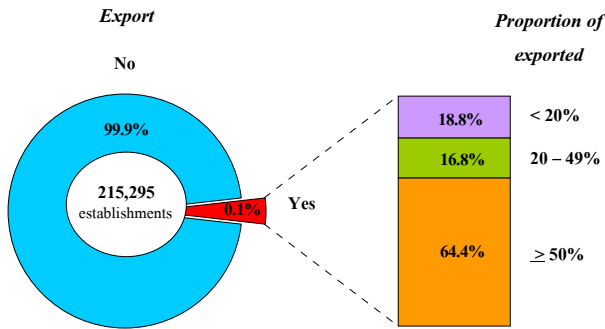
Figure 4 Percentage of manufacturing establishments by form of economic organization



Export

For the export of goods of manufacturing establishments, there were only 244 establishments or 0.1 percent. Out of these, about 64.4 percent exported with over 50% of the total sales of goods produced, about 18.8 percent had the proportion of exported with less than 20%. The rest of about 16.8 percent between 20 - 49% of export.

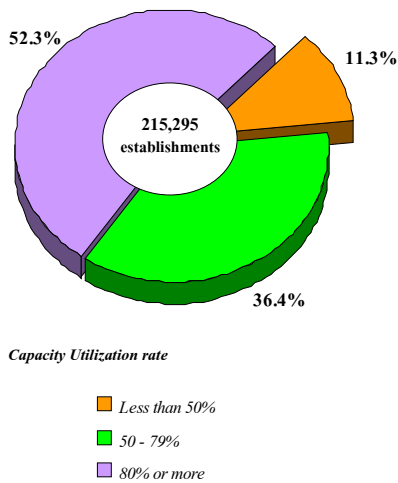
Figure 5 Percentage of manufacturing establishments by export



Capacity utilization rate

The capacity utilization rate for manufacturing establishments in 2006 was about 73.4%. The majority of manufacturing establishments (about 52.3 percent) had the capacity utilization rate at 80% or more. The establishments had capacity utilization rate of 50 - 79% was about 36.4 percent. While those with capacity utilization rate less than 50% was about 11.3 percent.

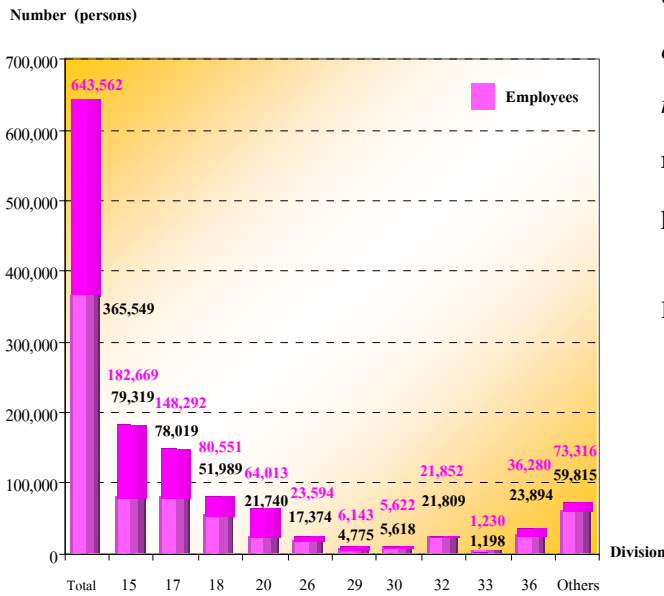
Figure 6 Percentage of manufacturing establishments by capacity utilization rate



Number of persons engaged and employees

In 2006, the workers of the manufacturing establishments in the Northeastern region were totally 0.6 million persons. In terms of employees, there were totally 0.4 million persons. The employees worked in *manufacture of food and beverages* and *manufacture of textiles* were 21.7 and 21.3 percent respectively. The *manufacture of wearing apparel* had about 14.2 percent. The *manufacture of furniture and manufacture of radio, television and communication* had the proportions, of about 6.5 and 6.0 percent respectively. The other divisions of industry not mentioned above, each division had the proportion of employees less than 6.0 percent.

Figure 7 Number of persons engaged of manufacturing establishments by division of industry



Persons engaged refer to owner or juristic partnerships unpaid worker and employees.

Division of industry :

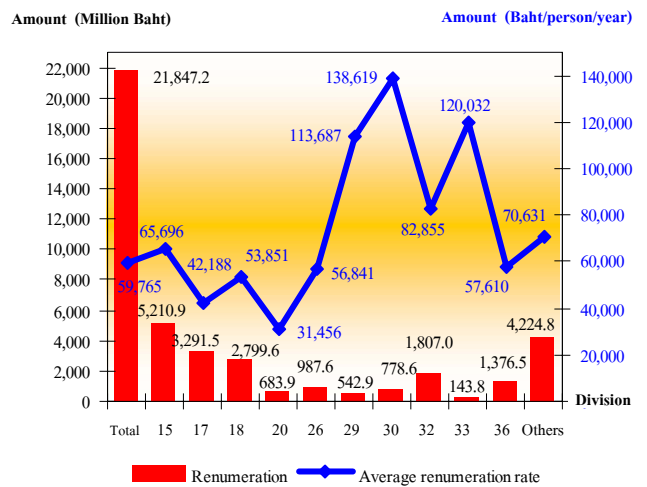
- Division 15 Food and Beverages
- Division 17 Textiles
- Division 18 Wearing Apparel
- Division 20 Wood and Wood Products
- Division 26 Non - Metallic Mineral Products
- Division 29 Machinery and Equipment
- Division 30 Office, Accounting and Computing
- Division 32 Radio, Television and Communication
- Division 33 Medical, Precision and Optical instruments etc.
- Division 36 Furniture
- Others Division 16, 19, 21-25, 27-28 31 34-35 and 37

Remuneration

In 2006, the employees working in manufacturing establishments in the Northeastern region received the total remuneration about 21,847.2 million baht or about 59,765 baht per person annually. The employees engaged in *manufacturing of office, accounting and*

computing received the highest annual remuneration of about 138,619 baht per person. Followed by those engaged in *manufacture of medical, precision and optical instrument etc.* and *manufacture of machinery and equipment* received the annual remuneration, of about 120,032 and 113,687 baht per person respectively.

Figure 8 Remuneration of manufacturing establishments by division of industry

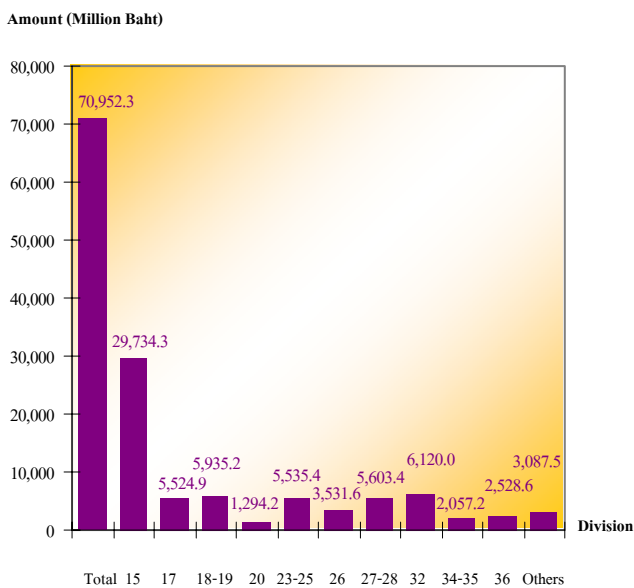


Value of gross output, intermediate consumption and value added

In 2006, the value of gross output of manufacturing establishments was totally 279,607.1 million baht. The intermediate consumption and value added were totally 208,654.8 million baht and 70,952.3 million baht respectively. Comparing the value added to value of gross output was about 25.4 percent.

For the average value of gross output had about 1.3 million baht per establishment and 434,500 baht per person. In terms of the average value added, had about 329,600 million baht per establishment and 110,200 baht per person respectively.

Figure 9 Value added of manufacturing establishments by division of industry



Value added = Value of gross output - Intermediate consumption
Value of gross output refers to receipts of establishment in 2006
Intermediate consumption refers to all expenses on the production process of goods or services in the establishment in 2006

Division of industry :

- Division 15 Food and Beverages
- Division 17 Textiles
- Division 18-19 Wearing apparel, Leather Products
- Division 20 Wood and Wood Products
- Division 23-25 Coke, Refined Petroleum Products, Chemicals, Rubber and Plastic
- Division 26 Other Non-Metallic Mineral Products
- Division 27-28 Basic Metals and Fabricated Metal Products
- Division 32 Radio, Television and Communication
- Division 34-35 Motor Vehicles, Trailers and Semi-Trailers and Other Transport Equipment
- Division 36 Furniture
- Others Division 16, 21-22, 29-31, 33 and 37

Considering by division of industry, it was found that most of value added, was from *manufacture of food products and beverages* with the highest proportion (about 41.9 percent). The following was from *manufacture of machinery and equipment*, (about 8.6 percent).

Data comparison of manufacturing establishments during 10 years

Comparing the data of industrial census in 2007 and 1997 of which the operation period was of the year in 2006 and 1996, the results showed that number of manufacturing establishments with 11 persons engaged or more increased by 207.6%, as well as number of persons engaged increased by 142.7%. However, average number of employees per establishment decreased from 65 persons to 51 persons or decreased by 21.1%.

In terms of employment, number of employees increased by 143.1%. It is noticeable that the average number of employees per establishment decreased from 63 person to 50 person per establishment or decreased by 20.9%. Due to the establishments adapted new technology process to their businesses. However, the annual remuneration during 10 years increased by 196.7%.

For the value of gross output, intermediate consumption and value added of manufacturing establishments during 10 years increased by 163.3%, 196.0% and 95.4% respectively.

Table 1 Principal data of manufacturing establishments in year 1996 and 2006

Data items	1996 ^{1/}	2006 ^{2/}	% Change
Number of establishments (Establishments)	1,941	5,970	207.6
Number of persons engaged (Persons)	125,730	305,097	142.7
<i>Average per establishment (Person)</i>	<i>64.8</i>	<i>51.1</i>	<i>-21.1</i>
Number of employees (Persons)	122,475	297,722	143.1
<i>Average per establishment (Person)</i>	<i>63.1</i>	<i>49.9</i>	<i>-20.9</i>
Remuneration (Million Baht)	6,571.8	19,497.1	196.7
<i>Average annual per employee (Baht)</i>	<i>53,658.3</i>	<i>65,487.6</i>	<i>22.0</i>
Value of gross output (Million Baht)	95,186.4	250,608.1	163.3
<i>Average per establishment (Thousand Baht)</i>	<i>49,039.9</i>	<i>41,977.9</i>	<i>-14.4</i>
<i>Average per persons engaged (Thousand Baht)</i>	<i>757.1</i>	<i>821.4</i>	<i>8.5</i>
Intermediate consumption (Million Baht)	64,239.1	190,146.9	196.0
<i>Average per establishment (Thousand Baht)</i>	<i>33,095.9</i>	<i>31,850.4</i>	<i>-3.8</i>
<i>Average per persons engaged (Thousand Baht)</i>	<i>510.9</i>	<i>623.2</i>	<i>22.0</i>
Value added (Million Baht)	30,947.3	60,461.2	95.4
<i>Average per establishment (Thousand Baht)</i>	<i>15,944.0</i>	<i>10,127.5</i>	<i>-36.5</i>
<i>Average per persons engaged (Thousand Baht)</i>	<i>246.1</i>	<i>198.2</i>	<i>-19.5</i>

Note : ^{1/} The 1997 industrial census: Northeastern region, Coverage : manufacturing establishments with 10 persons engaged or more.

^{2/} The 2007 industrial census: Northeastern region, Only manufacturing establishments with 11 persons engaged or more.

Data summary and recommendation

The results of the 2007 Industrial Census, show that there were totally 215,295 manufacturing establishments in the Northeastern region. Most of them were small scale establishments with 1 - 15 persons, of about 98.2 percent. The highlight industry was *manufacture of wearing apparel, leather products* (about 34.4 percent). There were totally 0.6 million persons and out of these, about 0.4 million persons were employees. They received the annual remuneration, of about 59,765 baht per person. The manufacturing establishments in the Northeastern region contributed value of gross output and intermediate consumption, of about 279,607.1 and 208,654.8 million baht respectively.

The value added had about 70,952.3 million baht.

Comparing the data of industrial census in 2007 and 1997, as the result, the operation of establishments in the Northeastern region during 10 years was favorably growth. It was favorable effected by the increasing in number of establishments, as well as the employment and value of gross output in overall of economic conditions. Furthermore, the Thai economy continues her sustainable growth should emphasize on investment promotion, increasing productivity and employment and goods and services promotion in order to support the demand in the country and from abroad.