

# DATA SUMMARY REPORT OF THE 2007 INDUSTRIAL CENSUS : SOUTHERN REGION



The National Statistical Office (NSO) is undertaking Industrial Census in 2007. This is the third of Thailand, after having conducted the first one in 1964 and the second in 1997. The main objective of the census is to collect basic information on manufacturing establishments, such as number, distribution and performance of establishments during the year. Prior to this report, basic information on the structure and distribution of establishment engaged in all economic activities is collected, was presented in the listing report of 2007 Industrial Census (basic information) Whole Kingdom.

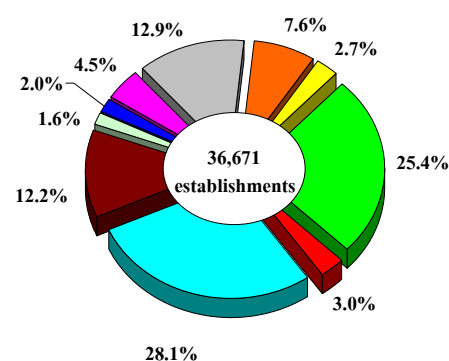
The statistical data presents the results of the 2007 Industrial Census concerning detailed information during January 1, 2006 to December 31, 2006 of manufacturing establishments, located in the **Southern region**. The main findings are as follows;

### Number of establishments by division of industry

The results of the 2007 Industrial Census, there were totally 36,671 manufacturing establishments, located in the Southern region. The highlight industries of this region were *manufacture of wearing apparel* and *manufacture of food products and beverages*. There were about 28.1 and 25.4 percent respectively. The followings were *manufacture of fabricated metal products, except machinery and equipment*

(about 12.9 percent) *manufacture of wood and wood products* (12.2 percent) and *manufacture of furniture* (7.6 percent).

**Figure 1 Percentage of manufacturing establishments by division of industry**

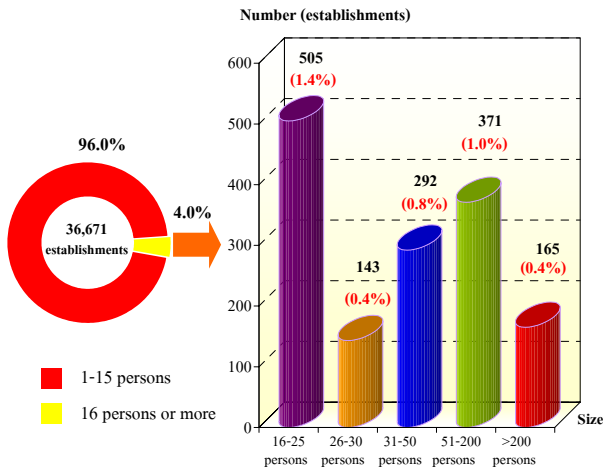


- Division 15 Food and Beverages
- Division 17 Textiles
- Division 18 Wearing Apparel
- Division 20 Wood and Wood Products
- Division 21-22 Paper and Paper Products, Printing
- Division 23-25 Coke, Refined Petroleum Products, Chemical, Rubber and Plastic
- Division 26-27 Non-Metallic Mineral Products and Basic Metals
- Division 28 Fabricated Metal Products
- Division 36 Furniture
- Other Divisions : 16, 19, 29, 31-35 and 37

### Size of establishment

Most of manufacturing establishments or about 96.0 percent were small scale establishments with 1 - 15 persons. The establishments with over 15 persons were about 4.0 percent or 1,476 establishments. Out of these, with 51 - 200 persons were 371 establishments and 165 establishments with more than 200 persons.

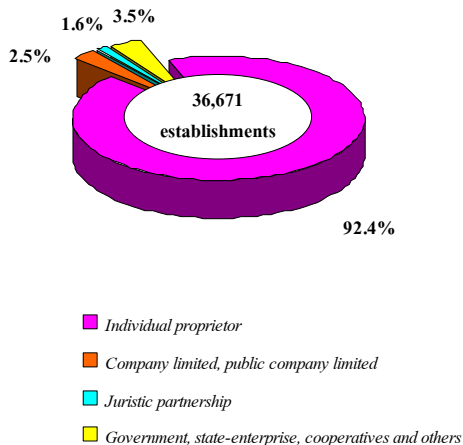
**Figure 2 Number of manufacturing establishments by size of establishment (number of persons engaged)**



### Form of legal organization

Most of manufacturing establishments (about 92.4 percent) were individual proprietor. The establishments, which were in the form of government, state enterprise cooperatives and others of about 3.5 percent. For those, which were company limited or public company limited and juristic partnership had the proportions, of about 2.5 and 1.6 percent respectively.

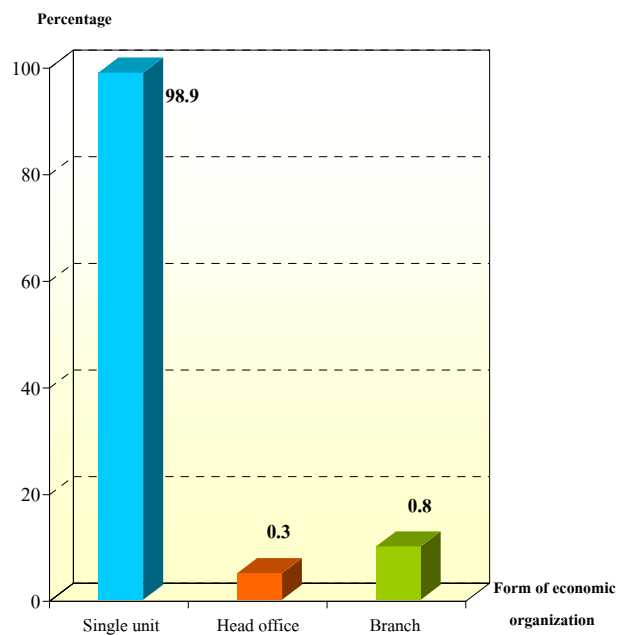
**Figure 3 Percentage of manufacturing establishments by form of legal organization**



### Form of economic organization

The establishments in this industrial census were single unit with the highest proportion, of about 98.9 percent. While the establishments were in branch and head office had very small proportions, of about 0.8 and 0.3 percent respectively.

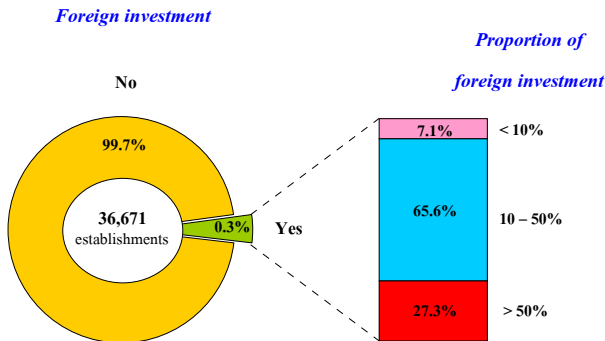
**Figure 4 Percentage of manufacturing establishments by form of economic organization**



### Foreign investment or share holding

Most of manufacturing establishments (about 99.7 percent) in the Southern region, had no foreign investment or share holding, while the rest of about 99 establishments or about 0.3 percent did. Out of these, about 65.6 percent was 10 - 50% of share holding and about 27.3 percent was over 50% of share holding. The rest of only 7.1 percent was less than 10% of share holding.

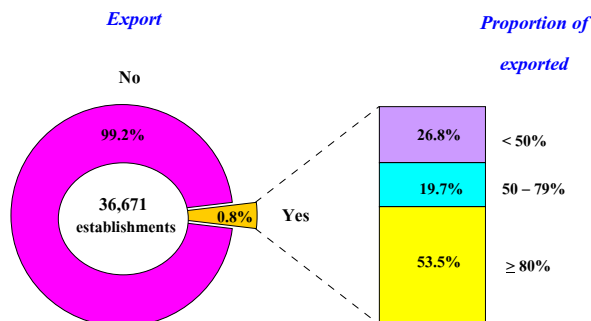
**Figure 5 Percentage of manufacturing establishments by foreign investment or share holding**



**Export**

For the export of goods of manufacturing establishments, there were only 299 establishments or 0.8 percent. Out of these, about 53.5 percent exported with over 80% of the total sales of goods produced, about 26.8 percent had the proportion of exported less than 50%. The rest of about 19.7 percent was between 50 - 79% of export.

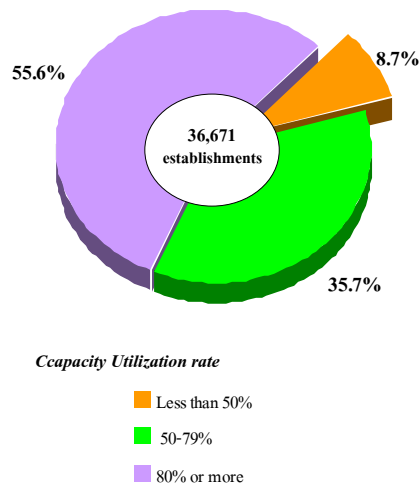
**Figure 6 Percentage of manufacturing establishments by export**



**Capacity utilization rate**

The capacity utilization rate for manufacturing establishments in 2006 was about 77.1%. The majority of manufacturing establishments (about 55.6 percent) had the capacity utilization rate at 80% or more. The establishments had capacity utilization rate of 50 - 79% was about 35.7 percent. While those with capacity utilization less than 50% was about 8.7 percent.

**Figure 7 Percentage of manufacturing establishments by capacity utilization rate**

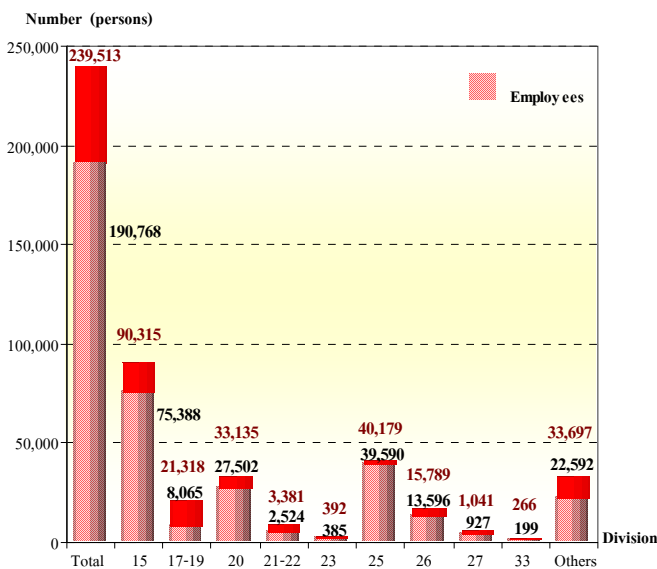


**Number of persons engaged and employees**

In 2006, the workers in the manufacturing establishments in the Southern region were totally 239,513 persons. In terms of employees, there were totally 190,768 persons. Most of them about 39.5 percent worked in *manufacture of food and beverages*. Followed by those worked in *manufacture of rubber and plastic products* of

about 20.8 percent. For the employees worked in the *manufacture of wood and wood products* of about 14.4 percent. The other divisions of industry not mentioned above, each division had the proportion of employees less than 8.0 percent.

**Figure 8 Number of persons engaged of manufacturing establishments by division of industry**



Persons engaged refer to owner or juristic partnerships  
unpaid worker and employees.

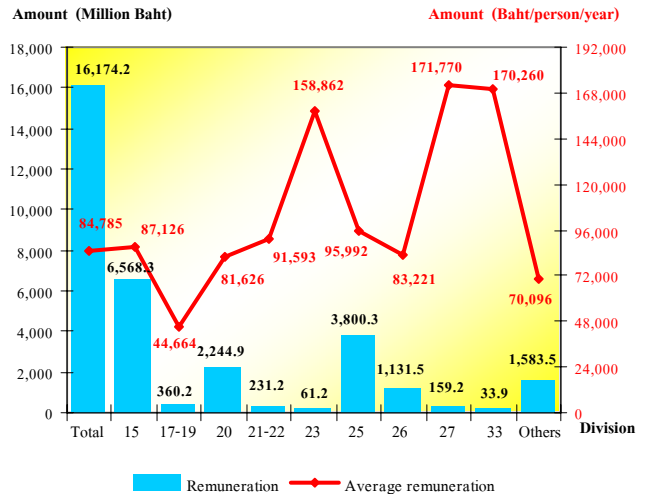
**Division of industry :**

- Division 15 Food and Beverages
- Division 17-19 Textiles, Wearing Apparel, Leather Products
- Division 20 Wood and Wood Products
- Division 21-22 Paper and Paper Products, Printing
- Division 23 Coke, Refined Petroleum Products
- Division 25 Rubber and Plastic Products
- Division 26 Non-Metallic Mineral Products
- Division 27 Basic Metals
- Division 33 Medical, Precision and Optical Instrument
- Other Divisions : 16, 24, 28-32 and 34-37

**Remuneration**

In 2006, the employees working in manufacturing establishments in the Southern region received the total remuneration about 16,174.2 million baht or about 84,785 baht per person annually. The employees engaged in *manufacturing of basic metals* and *manufacture of medical, precision and optical instrument, watches and clocks* received annual remuneration higher than the others, of about 171,770 and 170,260 baht per person respectively. Those engaged in *manufacture of coke, refined petroleum products and nuclear fuel* received the annual remuneration about 158,862 baht per person.

**Figure 9 Remuneration of manufacturing establishments by division of industry**

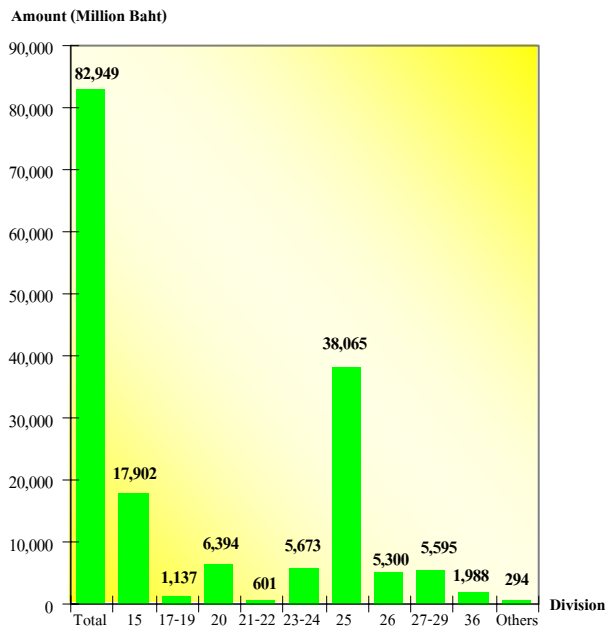


**Value of gross output, intermediate consumption and value added**

In 2006, the value of gross output of manufacturing establishments was totally 358,854.6 million baht. The intermediate consumption and

value added were totally 275,905.2 million baht and 82,949.4 million baht respectively. Comparing the value added to value of gross output was about 23.1 percent.

**Figure 10 Value added of manufacturing establishments by division of industry**



*Value added = Value of gross output - Intermediate consumption*

*Value of gross output refers to receipts of establishment in 2006*

*Intermediate consumption refers to all expenses on the production process of goods or services in the establishment in 2006*

Division of industry :

- Division 15 Food and Beverages
- Division 17-19 Textiles, Wearing Apparel, Leather Products
- Division 20 Wood and Wood Products
- Division 21-22 Paper and Paper Products, Printing
- Division 23-24 Coke, Refined Petroleum Products and Chemicals
- Division 25 Rubber and Plastic Products
- Division 26 Non-Metallic Mineral Products
- Division 27-29 Basic Metals, Fabricated Metal Products and Machinery and Equipment
- Division 36 Furniture
- Other Divisions : 16, 31-35 and 37

For the average value of gross output was about 9.8 million baht per establishment and 1.5 million baht per person. In terms of the average value added, there was about 2.3 million baht per establishment and 346,325 baht per person respectively.

Considering by division of industry, it was found that most of value added, was from *manufacture of rubber and plastic products* with the high proportions (about 45.9 percent). The following was from *manufacture of food products and beverages*, about 21.6 percent.

### Data comparison of manufacturing establishments during 10 years

Comparing the data of industrial census in 2007 and 1997 of which the operation period was of the year in 2006 and 1996, the results showed that number of manufacturing establishments with 11 persons engaged or more increased by 22.9%, as well as number of persons engaged increased by 15.4%. However, average number of employees per establishment decreased from 82 persons to 77 persons or decreased by 6.1%.

In terms of employment, number of employees increased by 13.8%. It is noticeable that the average number of employees per establishment decreased from 81 persons to 76 persons per establishment or decreased by 6.4%. Due to the establishments adapted new technology process to their businesses. However, the annual remuneration during 10 years increased by 89.7%.

For the value of gross output, intermediate consumption and value added of manufacturing establishments during 10 years increased by 102.1%, 110.5% and 77.5% respectively.

**Table 1 Principal data of manufacturing establishments in year 1996 and 2006**

<b>Data items</b>	<b>1996<sup>1/</sup></b>	<b>2006<sup>2/</sup></b>	<b>% Change</b>
<b>Number of establishments (Establishments)</b>	<b>1,736</b>	<b>2,133</b>	<b>22.9</b>
<b>Number of persons engaged (Persons)</b>	<b>142,359</b>	<b>164,248</b>	<b>15.4</b>
<i>Average per establishment (Persons)</i>	<i>82.0</i>	<i>77.0</i>	<i>-6.1</i>
<b>Number of employees (Persons)</b>	<b>140,782</b>	<b>161,907</b>	<b>15.0</b>
<i>Average per establishment (Persons)</i>	<i>81.1</i>	<i>75.9</i>	<i>-6.4</i>
<b>Remuneration (Million Baht)</b>	<b>7,714.8</b>	<b>14,637.6</b>	<b>89.7</b>
<i>Average annual per employee (Baht)</i>	<i>54,799.6</i>	<i>90,407.5</i>	<i>65.0</i>
<b>Value of gross output (Million Baht)</b>	<b>169,361.5</b>	<b>342,239.8</b>	<b>102.1</b>
<i>Average per establishment (Thousand Baht)</i>	<i>97,558.5</i>	<i>160,450.0</i>	<i>64.5</i>
<i>Average per person (Thousand Baht)</i>	<i>1,189.7</i>	<i>2,083.7</i>	<i>75.1</i>
<b>Intermediate consumption (Million Baht)</b>	<b>126,059.8</b>	<b>265,397.4</b>	<b>110.5</b>
<i>Average per establishment (Thousand Baht)</i>	<i>72,615.1</i>	<i>124,424.5</i>	<i>71.3</i>
<i>Average per person (Thousand Baht)</i>	<i>885.5</i>	<i>1,615.8</i>	<i>82.5</i>
<b>Value added (Million Baht)</b>	<b>43,301.7</b>	<b>76,842.4</b>	<b>77.5</b>
<i>Average per establishment (Thousand Baht)</i>	<i>24,943.4</i>	<i>36,025.5</i>	<i>44.4</i>
<i>Average per person (Thousand Baht)</i>	<i>304.2</i>	<i>467.8</i>	<i>53.8</i>

**Note :** <sup>1/</sup> The 1997 industrial census: Southern region, Coverage : manufacturing establishments with 10 persons engaged or more.

<sup>2/</sup> The 2007 industrial census: Southern region, Only manufacturing establishments with 11 persons engaged or more.

### **Data summary and recommendation**

The results of the 2007 Industrial Census, show that there were totally 36,671 manufacturing establishments in the Southern region. Most of them were small scale establishments with 1-15 persons, of about 96.0 percent. The highlight industry was *manufacture of wearing apparel* (about 28.1 percent). There were totally 0.2 million persons and almost 0.2 million persons were employees. They received the annual remuneration, of about 84,785 baht per person. The manufacturing establishments in the Southern region provided value of gross output and intermediate consumption, of about 358,854.6 and 275,905.2 million baht respectively. The value added had about 82,949.4 million baht.

Comparing the data of industrial census in 2007 and 1997, as the result, the operation of establishments in the Southern region during 10 years was favorably growth. It was favorable effected by the increasing in number of establishments, as well as the employment and value of gross output in overall of economic conditions. Furthermore, the Thai economy continues her sustainable growth should emphasize on investment promotion, increasing productivity and employment and goods and services promotion in order to support the demand in the country and abroad.